

IDC5 Software update

CAR 73.0.0

TEXA

New SOFTWARE FEATURES

CODING AND CALIBRATION PROCEDURES FOR THE RENAULT VEHICLES PROTECTED BY SECURITY GATEWAY

NEW DEVELOPMENTS AND IMPLEMENTATIONS IN THE WORLD OF THE ADAS CALIBRATIONS LASER SCANNER

HYBRID / ELECTRIC VEHICLES

NEW DASHBOARD FEATURES

ERROR CLEARING FROM THE TGS3 FUNCTION THROUGH THE FCA AUTHENTICATED DIAGNOSIS

[Link](#)

New DIAGNOSTIC FEATURES

EUROPEAN Market

CAR

SUPERCAR

NORTH AMERICAN Market

BRAZILIAN Market

INDIAN Market

[Coverage of Makes](#)

IDC5 CAR 73.0.0 SOFTWARE UPDATE

The **IDC5 CAR 73** software update includes, once again, a large number of diagnostic developments, the best of TEXA's multi-brand diagnosis dedicated to cars and light commercial vehicles. Using **IDC5 CAR** during your daily workshop activities means having an avant-garde solution, rich in new diagnostic possibilities, special functions and technical information that are essential for completing even the most complex workshop operations professionally and with full customer satisfaction.

IDC5 CAR 73 includes the update of 67 makes. New diagnostic systems have been developed for these makes, which have never been released previously, and involve over 700 models. The work of TEXA's technical developers also led to further increasing the coverage of ADAS, electric and hybrid vehicles, and the interactive "DASHBOARD" screens.

IDC5 CAR 73 also includes the new features released through the continuous updates 72.1, 72.2, 72.3, 72.4 and is characterised by over **22.000 new possible selections** for the major makes on the market worldwide, among which: **ALFA ROMEO, AUDI, BENTLEY, BMW, BUGATTI, CADILLAC, CHEVROLET, CHRYSLER, CITROËN, DAIHATSU, DODGE, DS, FERRARI, FIAT, FORD, GENESIS, GMC, HOLDEN, HONDA, HYUNDAI, JAGUAR, JEEP, KIA, LAMBORGHINI, LAND ROVER, LEXUS, LINCOLN, MASERATI, MAZDA, MERCEDES-BENZ, MINI, MITSUBISHI, NISSAN, OPEL, PEUGEOT, PORSCHE, RENAULT, SEAT, SKODA, SSANGYONG, SUBARU, SUZUKI, TOYOTA, VOLKSWAGEN, VOLVO.**

NOTE: IDC5 software not available for the old generation tools AXONE Direct, AXONE Pad, AXONE Palmtop.

IMPORTANT NOTICE FOR CUSTOMERS WHO OWN A PC with Windows 7

Dear customers, Windows 7 is by now an obsolete operating system, no longer supported by Microsoft. To make the most of all the functions in the **TEXA IDC5** diagnostic software, we recommend you update your Personal Computer to the latest version of the operating system Windows 10.

IMPORTANT NOTICE

Starting from April 2021, the new IDC5 software versions will no longer support the AXONE 4 tools with a serial number that starts by DA8.

For further information contact your official TEXA distributor.

NOTABLE NEW FEATURES INTRODUCED IN THE IDC5 CAR 73.0 UPDATE

- 1. CODING AND CALIBRATION PROCEDURES FOR THE RENAULT VEHICLES PROTECTED BY SECURITY GATEWAY**
- 2. NEW ADAS DEVELOPMENTS AND IMPLEMENTATIONS**
- 3. HYBRID / ELECTRIC VEHICLES**
- 4. NEW DASHBOARD FEATURES**
- 5. ERROR CLEARING FROM THE TGS3 FUNCTION THROUGH THE FCA AUTHENTICATED DIAGNOSIS**

CODING AND CALIBRATION PROCEDURES FOR THE RENAULT VEHICLES PROTECTED BY SECURITY GATEWAY

NEW DEVELOPMENTS AND IMPLEMENTATIONS IN THE WORLD OF THE ADAS CALIBRATIONS LASER SCANNER

HYBRID / ELECTRIC VEHICLES

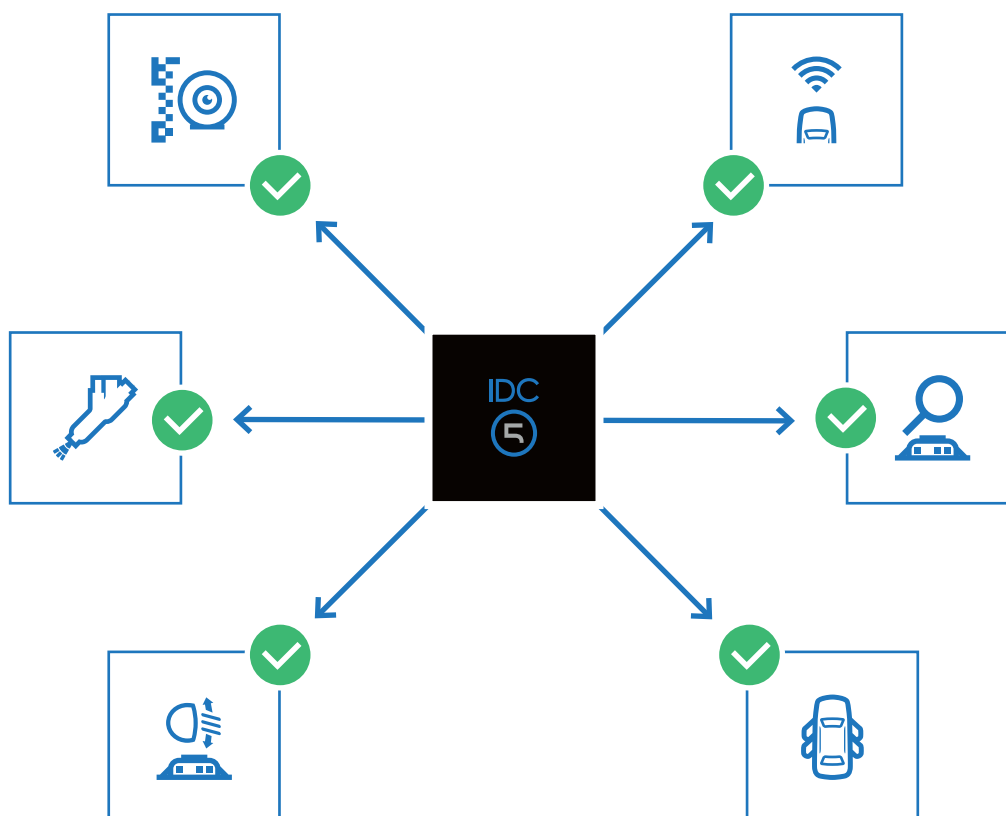
NEW DASHBOARD FEATURES

ERROR CLEARING FROM THE TGS3 FUNCTION THROUGH THE FCA AUTHENTICATED DIAGNOSIS

CODING AND CALIBRATION PROCEDURES FOR THE RENAULT VEHICLES PROTECTED BY SECURITY GATEWAY

TEXA allows its customers to access the diagnosis of the French manufacturer in a completely safe and legal way.

RENAULT has recently introduced a protection system via GATEWAY on its models **Clio V [19>]**, **Captur II [20>]** and **Zoe II [19>]**; this system makes it impossible for independent vehicle repairers with multi-brand diagnosis to access the adjustment and coding functions required for vehicle repairing.



To unlock the vehicle, you must have a physical **TOKEN** and a software unlock application provided by Renault. Along with the **TOKEN**, Renault will provide a **User ID** and the password that must be used when accessing the vehicle unlocking functions.

[Link](#)

[Coverage of Makes](#)

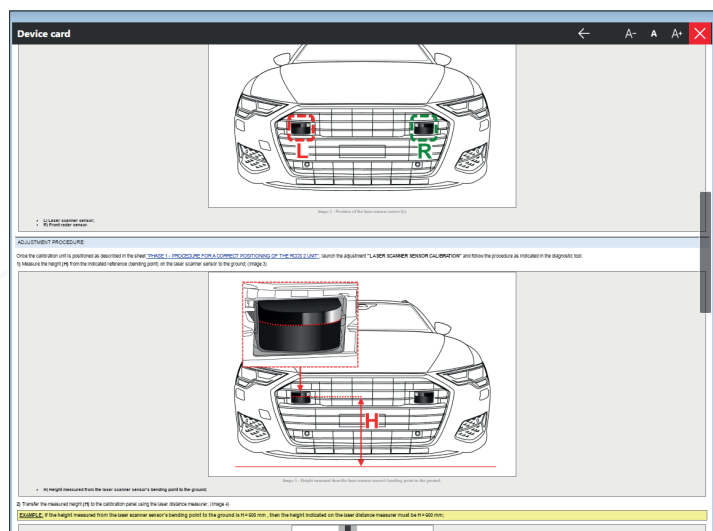
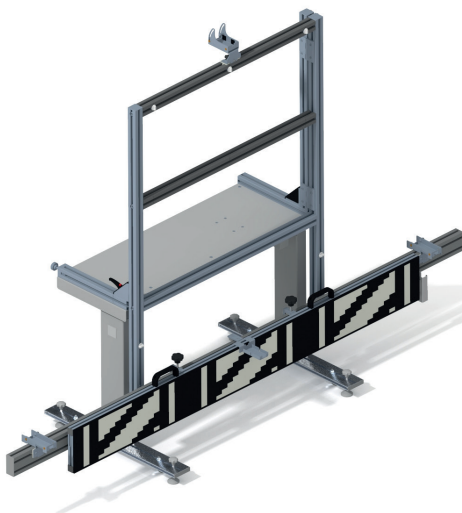
NEW DEVELOPMENTS AND IMPLEMENTATIONS IN THE WORLD OF THE ADAS CALIBRATIONS

LASER SCANNER

Thanks to the **IDC5 CAR 73** update, it will be possible to perform the calibration of the **new driver assistance system** AUDI "LASER SCANNER" on all the new AUDI vehicle range:

- A6 Sportback / Avant / Avant Allroad / S6 / RS6 [18>];
- A7 Sportback / S7 / RS7 [18>];
- A8 / S8 [18>];
- Q8 / RSQ8 [18>];
- E-Tron / E-Tron Sportback [19>];

Using the **RCCS 2** unit and the dedicated Laser Scanner panel, it is possible to calibrate the front monitoring system, with the support of specific help sheets.



CODING AND CALIBRATION PROCEDURES FOR THE RENAULT VEHICLES PROTECTED BY SECURITY GATEWAY

NEW DEVELOPMENTS AND IMPLEMENTATIONS IN THE WORLD OF THE ADAS CALIBRATIONS LASER SCANNER

HYBRID / ELECTRIC VEHICLES

NEW DASHBOARD FEATURES

ERROR CLEARING FROM THE TGS3 FUNCTION THROUGH THE FCA AUTHENTICATED DIAGNOSIS

NEW ADAS FEATURES

Thanks to this update, many new vehicles are now covered as for the **ADAS** functionalities. Following are just a few:

AUDI

A1 / Citycarver [20>]

- Front radar calibration;
- Front camera calibration;
- Rear camera calibration;
- Lane change assist calibration;

A3 Sportback / Sedan [20>]

- Front radar calibration;
- Front camera calibration;
- Rear camera calibration;

E-Tron / Sportback [19>]

- Front radar calibration;
- Laser scanner calibration;
- Front camera calibration;
- Rear camera calibration;
- 360° camera calibration;

BMW

X6 [19>]

- Front radar calibration;
- Front camera calibration;
- 360° camera calibration;
- Front and rear side radar calibration;

LAND ROVER

Defender 90/110 [20>]

- Front radar calibration;
- Front camera calibration;

[Link](#)

[Coverage of Makes](#)

Discovery Sport [20>]

- Front radar calibration;
- Front camera calibration;

MAZDA

MAZDA 3/MAZDA 3 SEDAN [19>]

- Front radar calibration;
- Front camera calibration;
- 360° camera calibration;
- Front and rear side radar calibration;

MERCEDES-BENZ

GLE Coupé [20>]

- Front radar calibration;
- Front camera calibration;
- 360° camera calibration;
- Blind spot module calibration;

GLA [20>]

- Front radar calibration;
- Front camera calibration;
- 360° camera calibration;
- Blind spot module calibration;

SEAT

Leon / Sportstourer [20>]

- Front radar calibration;
- Front camera calibration;

SKODA

Octavia / Kombi [20>]

- Front radar calibration;
- Front camera calibration;

CODING AND CALIBRATION
PROCEDURES FOR THE
RENAULT VEHICLES
PROTECTED BY SECURITY
GATEWAY

NEW DEVELOPMENTS AND
IMPLEMENTATIONS
IN THE WORLD OF THE
ADAS CALIBRATIONS
LASER SCANNER

HYBRID /
ELECTRIC VEHICLES

NEW DASHBOARD
FEATURES

ERROR CLEARING FROM THE
TGS3 FUNCTION THROUGH
THE FCA AUTHENTICATED
DIAGNOSIS

TOYOTA

- Front radar calibration;
- Front camera calibration;

RAV4 Plug-in/ Prime Plug-in [20>]

- Front radar calibration;
- Front camera calibration;

VOLKSWAGEN

GOLF VIII [20>]

- Front radar calibration;
- Front camera calibration;
- Rear camera calibration;

[Link](#)

[Coverage of Makes](#)

HYBRID / ELECTRIC VEHICLES

TEXA's constant commitment in the world of multi-brand diagnosis has always played an essential role in the repair market. The introduction of electric and hybrid vehicles in the market has led us to pay careful attention to the addition of new vehicle selections and the development of new diagnostic systems specifically for this type of vehicles.

Among the main implementations, following are some models recently introduced in the market:

- **AUDI E-Tron Sportback**
- **HONDA Jazz**
- **KIA Soul EV**
- **TOYOTA Yaris / RAV4 Plug-in**
- **VOLKSWAGEN ID.3.**

Another very interesting feature is the development of **MILD-HYBRID** engine types for the new engines 1.0 **FIAT 500/LANCIA Ypsilon** and on the **VOLVO** vehicles in the models **V60 / V90 / S60 / S90 / XC40 / XC60**. The coverage of the **PLUG-IN HYBRID** model range has also been updated with various **AUDI, BMW** and **MERCEDES-BENZ** models.

AUDI with the **A6 / A7 / A8 / Q5 / Q7** models with **TFSI** engines, **BMW** in the **X1** and **X3** range, and **MERCEDES-BENZ** in the **CLA / GLA / GLC / GLE** series.

CODING AND CALIBRATION PROCEDURES FOR THE RENAULT VEHICLES PROTECTED BY SECURITY GATEWAY

NEW DEVELOPMENTS AND IMPLEMENTATIONS IN THE WORLD OF THE ADAS CALIBRATIONS LASER SCANNER

HYBRID / ELECTRIC VEHICLES

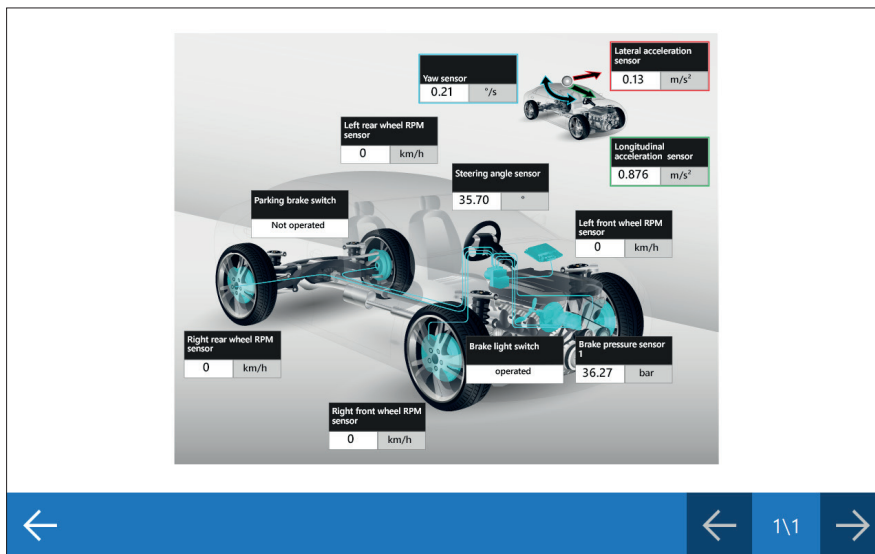
NEW DASHBOARD FEATURES

ERROR CLEARING FROM THE TGS3 FUNCTION THROUGH THE FCA AUTHENTICATED DIAGNOSIS

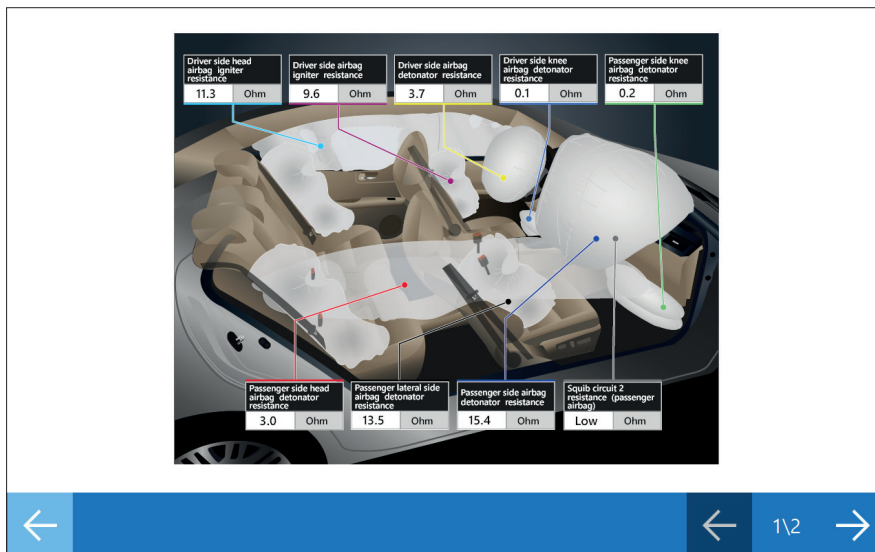
NEW DASHBOARD FEATURES

The **CAR 73.0** update also introduces a great number of new **DASHBOARDS** in the diagnosis. Below you will find some examples, divided by system:

ABS



AIRBAG



[Link](#)

[Coverage of Makes](#)

LANE KEEPING ASSIST

The screenshot displays the Lane Keeping Assist diagnostic interface. It features a central camera view of a car and a calibration panel. The interface is overlaid with several data boxes:

- Status of calibration procedure - recognition:** Calibration failed
- System status:** ON
- Status of recognition of right line:** Recognized
- Warning status of left line:** OFF
- Operation set speed:** 100 kph
- Vehicle speed:** 100 kph
- Status of recognition of right line:** ON
- Status of recognition of left line:** Not recognized
- Image vertical center position:** 145 Pixel
- Image horizontal center position:** 135 Pixel

Navigation arrows and a page indicator '1/1' are visible at the bottom of the screen.

DISTANCE CONTROL

The screenshot displays the Distance Control diagnostic interface. It features a central camera view of a car and a calibration panel. The interface is overlaid with several data boxes:

- Adaptive Cruise Control (ACC):** Adaptive Cruise Control initialization
- Vertical misalignment:** 0.000
- Horizontal misalignment:** 0.000
- Control unit temperature:** -50 °C
- Status of the adjustment:** Measurement running
- Adjustment carried out - vertical adjustment angle:** 0.00
- Adjustment carried out - horizontal adjustment angle:** -81.47
- Adjustment carried out - skew angle:** 0.00
- Calibration panel horizontal deviation:** 1.524
- Calibration panel vertical deviation:** 1.524

Navigation arrows and a page indicator '1/1' are visible at the bottom of the screen.

CODING AND CALIBRATION PROCEDURES FOR THE RENAULT VEHICLES PROTECTED BY SECURITY GATEWAY

NEW DEVELOPMENTS AND IMPLEMENTATIONS IN THE WORLD OF THE ADAS CALIBRATIONS LASER SCANNER

HYBRID / ELECTRIC VEHICLES

NEW DASHBOARD FEATURES

ERROR CLEARING FROM THE TGS3 FUNCTION THROUGH THE FCA AUTHENTICATED DIAGNOSIS

BLIND SPOT MODULE

Blind spot monitoring switch	Last blind spot sensor operating mode	Radar sensor
Not available	ON	Deterioration
Gear shift position	Steering angle	Steering angle sensor status
Direct R (manual transmission)	47.5	Normal

Full turn switch (left)	Full turn switch (right)
ON	OFF

B5W (Blind Spot Warning)	RCTA (Rear cross traffic alert) function
Active	Active

Navigation: ← 1\1 →

PRE-CRASH SAFETY SYSTEM 2

Pre-crash system	Front radar sensor low voltage detection (history data)	Front radar sensor temperature error detection (history data)
Not available	OFF	OFF
Pre-crash system brake deactivation switch	Front radar sensor beam axis horizontal deviation detection (history data)	Front radar sensor beam axis vertical deviation detection (history data)
ON	OFF	OFF

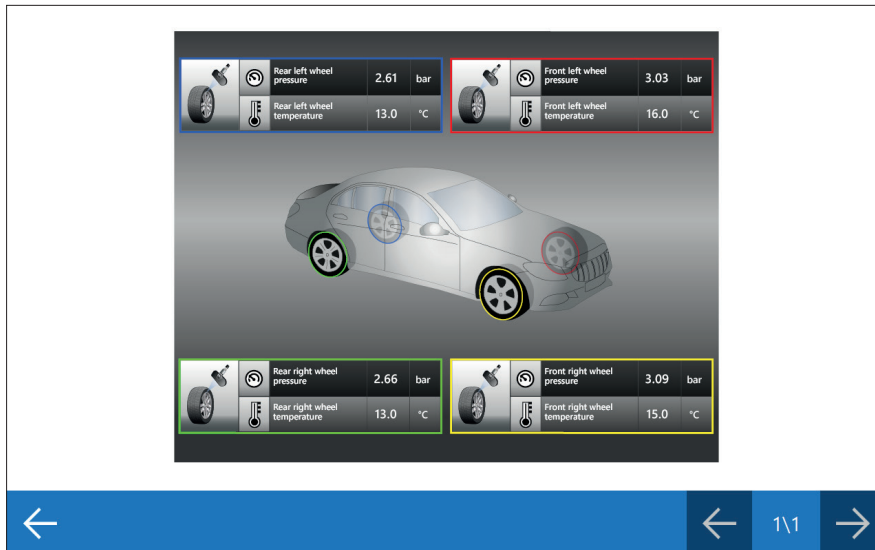
Environmental conditions seen by the front radar sensor (history data)	Dirty front radar sensor acknowledgment (history data)
Not available	OFF

Navigation: ← 1\1 →

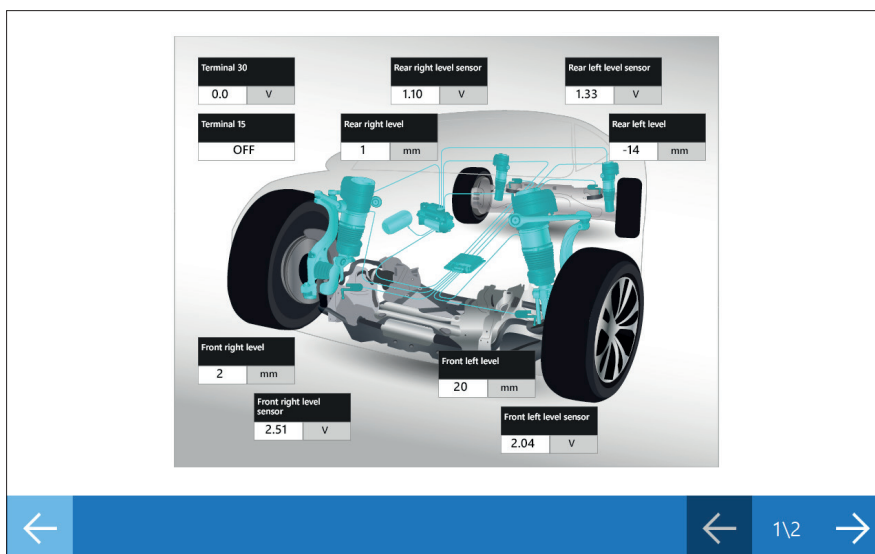
[Link](#)

[Coverage of Makes](#)

TYRE PRESSURE



SUSPENSIONS



CODING AND CALIBRATION PROCEDURES FOR THE RENAULT VEHICLES PROTECTED BY SECURITY GATEWAY

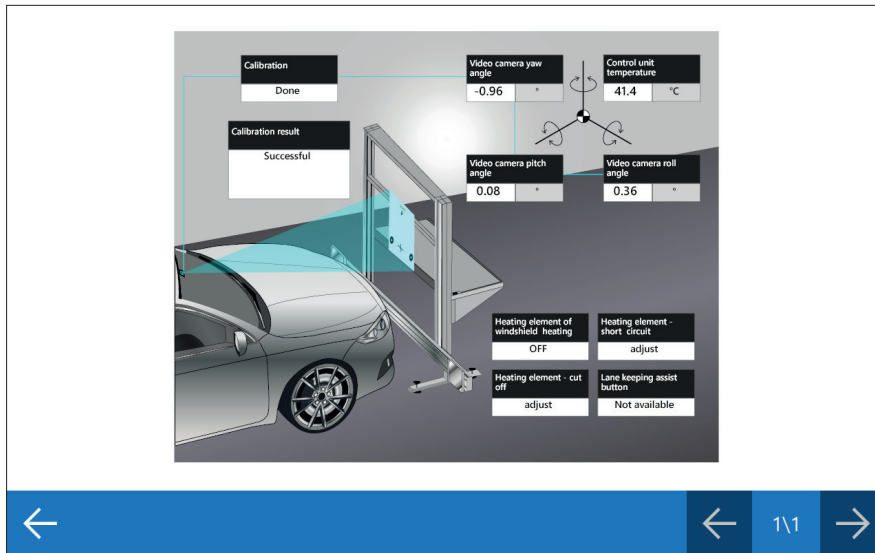
NEW DEVELOPMENTS AND IMPLEMENTATIONS IN THE WORLD OF THE ADAS CALIBRATIONS LASER SCANNER

HYBRID / ELECTRIC VEHICLES

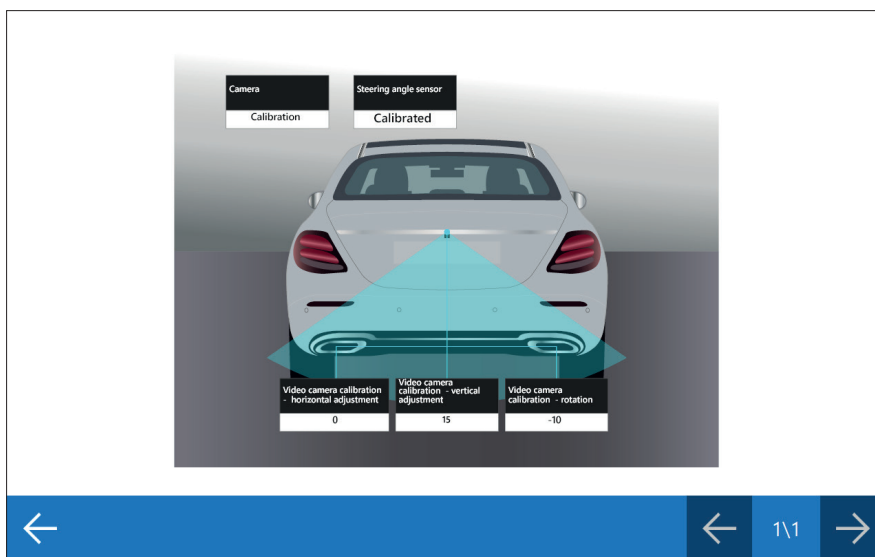
NEW DASHBOARD FEATURES

ERROR CLEARING FROM THE TGS3 FUNCTION THROUGH THE FCA AUTHENTICATED DIAGNOSIS

MULTIFUNCTION CAMERA



REAR-VIEW CAMERA



Link

Coverage of Makes

ERROR CLEARING FROM THE TGS3 FUNCTION THROUGH THE FCA AUTHENTICATED DIAGNOSIS

Following the introduction of the **FCA authenticated diagnosis*** in the CAR 70.0 update, in this update TEXA enhances the functionality and allows mechanics to carry out a global error clearing directly from the TGS3s function, in just a few easy steps.

- 1) Launch a **TGS3s** global system scan;
- 2) In the detected errors window, launch an **ERROR CLEARING**;
- 3) The diagnostic tool will carry out the authentication (if you have a subscription or token) and an error clearing procedure;
- 4) Launch a new **TGS3s** global system scan.

* FCA authenticated diagnosis can be used with AXONE Nemo, AXONE NEMO 2, AXONE 5 or a PC with Windows 10 operating system, and with the latest generation Navigator (check the compatibility with your TEXA distributor).

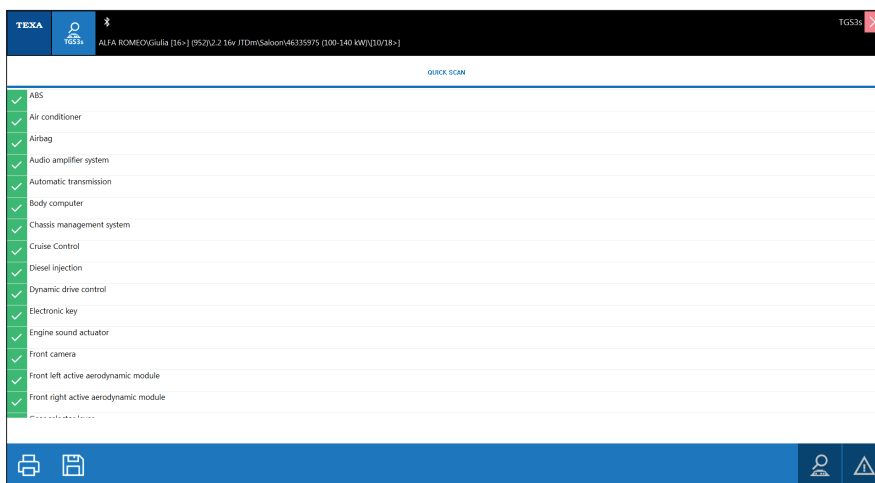
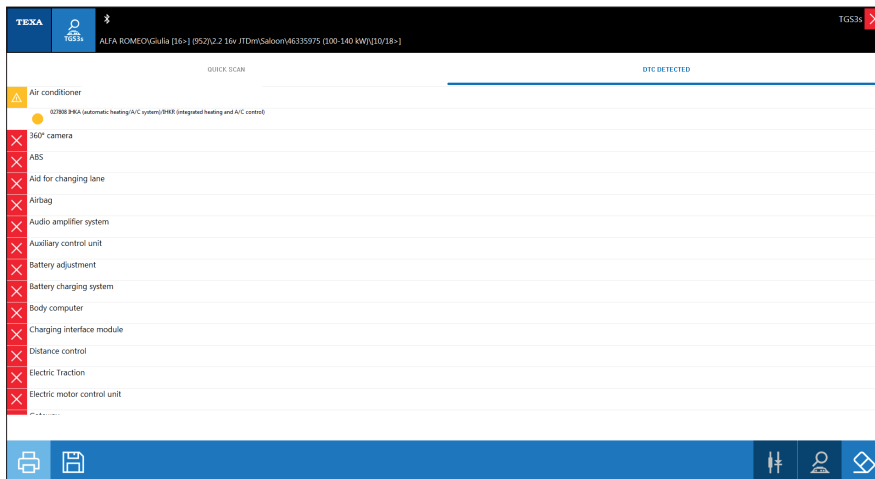
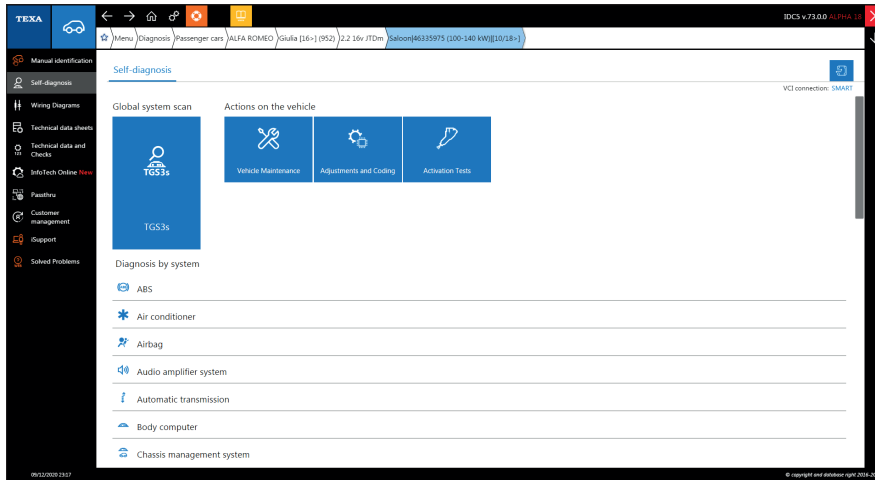
CODING AND CALIBRATION PROCEDURES FOR THE RENAULT VEHICLES PROTECTED BY SECURITY GATEWAY

NEW DEVELOPMENTS AND IMPLEMENTATIONS IN THE WORLD OF THE ADAS CALIBRATIONS LASER SCANNER

HYBRID / ELECTRIC VEHICLES

NEW DASHBOARD FEATURES

ERROR CLEARING FROM THE TGS3 FUNCTION THROUGH THE FCA AUTHENTICATED DIAGNOSIS



[Link](#)

[Coverage of Makes](#)

New DIAGNOSTIC FEATURES

EUROPEAN Market

CAR

Introduction of the NEW MAKE CUPRA with the model ATECA.

AUDI

New models have been created and the related diagnosis has been added:

- A1 Citycarver [20>]
- A3 Sportback / Sedan [20>]
- A6 [19>]
- E-Tron Sportback [20>]
- RS6 [20>]
- RS7 [20>]
- RSQ8 [19>]
- S8 [19>]
- SQ8 [19>]

New diagnostic systems have been developed for the models A3 Sportback / Sedan [20>]:

- AIRBAG
- BRAKE BOOSTER
- LANE CHANGE ASSIST
- AUTOMATIC TRANSMISSION
- BURGLARY PROTECTION CONTROL UNIT
- ELECTRONIC KEY
- DISTANCE CONTROL
- INJECTION 3/BATTERY ENERGY CONTROL MODULE 2
- START/CHARGING CONTROL MODULE
- SWITCHOVER BOARD
- HEAD-UP DISPLAY
- POWER STEERING
- INFORMATION ELECTRONIC SYSTEM 1

[EUROPEAN
Market](#)[NORTH AMERICAN
Market](#)[BRAZILIAN
Market](#)[INDIAN
Market](#)

- SUSPENSIONS
- SOUND SYSTEM
- INSTRUMENTATION
- REAR-VIEW CAMERA

A new diagnosis has been developed for the "RIGHT HEADLIGHT CONTROL UNIT" and "LEFT HEADLIGHT CONTROL UNIT" systems for the entire range currently on the market.

A new diagnosis of the "PETROL INJECTION" system has been developed for the models:

- RS6
- RS7
- RSQ8

The diagnosis of the "HIGH VOLTAGE CONVERTER" system has been updated for the models:

- A6 / S6 / RS6
- A7 / S7 / RS7
- E-Tron / E-Tron Sportback
- Q8 / SQ8 / RSQ8

The diagnosis of the "BATTERY CHARGER CONTROL MODULE" system has been updated for the models:

- A3
- A6
- A7
- Q8 / SQ8 / RSQ8

The diagnosis of the "SWITCHOVER BOARD" system has been updated for the models:

- A1
- Q2
- RSQ3
- A3 / S3 / RS3
- Q3
- RSQ2
- TT

BMW

New models have been created and the related diagnosis has been added:

- 3 [20>]
- 2 [19>]
- 8 [19>]

[Link](#)[Coverage of Makes](#)

- X5 [20>]
- X6 [19>]
- X6 M [20>]

The diagnosis of the "PETROL INJECTION" system has been updated for the models:

- Series 1 / 3 / 5 / 6 / 7 / 8
- i8
- X1 / X2 / X3 / X4 / X5 / X7
- Z4

The diagnosis of the "BATTERY ADJUSTMENT" system has been updated for the models:

- Series 5 / 7
- X3 / X4 / X5

The diagnosis of the "EV CONTROL SYSTEM" has been updated for the models:

- Series 2 / 3 / 5 / 7
- i8
- X5

The diagnosis of the "360° CAMERA" system has been updated for the models:

- Series 1 / 2 / 3 / 4 / 5 / 7 / 8
- i3 / i8
- X1 / X2 / X3 / X4 / X5 / X6 / X7

DS

The diagnosis of the following systems has been updated for the model DS3 Crossback:

- NAVIGATOR
- KEYLESS GO SYSTEM
- ELECTRIC MOTOR CONTROL UNIT
- ELECTRONIC CLIMATE CONTROL COMPRESSOR
- APPROACHING VEHICLE SOUND FOR PEDESTRIANS

The diagnosis of the following systems has been updated for the model DS7 Crossback:

- ELECTRIC DRIVE
- REAR A/C SYSTEM
- BRAKE BOOSTER
- BATTERY CONTROL MODULE
- ELECTRIC MOTOR CONTROL UNIT
- REAR ELECTRIC MOTOR

[EUROPEAN
Market](#)[NORTH AMERICAN
Market](#)[BRAZILIAN
Market](#)[INDIAN
Market](#)

- ELECTRONIC CLIMATE CONTROL COMPRESSOR
- APPROACHING VEHICLE SOUND FOR PEDESTRIANS

FIAT

A new engine type has been created and the related diagnosis has been added:

- 1.0i Mild Hybrid

For the models:

- 500
- 500C
- Panda

FORD

New models have been created and the related diagnosis has been added:

- Kuga III [19>]
- Puma [19>]
- Escape IV [19>]
- Explorer VI [19>]

A new diagnosis of the "FOUR-WHEEL DRIVE" system has been developed for the models:

- Edge II
- Escape IV
- Explorer VI
- Kuga III

A new diagnosis of the "ABS" system has been developed for the models:

- Flex
- Taurus V
- Taurus VI

A new diagnosis of the "AIRBAG" system has been developed for the models:

- Contour
- Crown Victoria
- Escape I
- Escort
- Excursion
- Expedition I
- Expedition II

[Link](#)[Coverage of Makes](#)

- Explorer II
- Explorer III
- Explorer Sport Trac
- F150
- Five Hundred
- Freestyle
- Maverick
- Mustang IV
- Taurus IV
- Taurus V
- Taurus VI
- Thunderbird XI
- Windstar
- Flex
- Freestar

A new diagnosis of the "AUTOMATIC TRANSMISSION" system has been developed for the models:

- Edge I
- Expedition III
- Expedition III EL/MAX
- Explorer IV
- Explorer Sport Trac
- Five Hundred
- Flex
- Focus IV
- Freestyle
- Taurus V
- Taurus VI

A new diagnosis of the "A/C" system has been developed for the models:

- Expedition III
- Expedition III EL/MAX

A new diagnosis of the "LEFT / RIGHT SIDE OBSTACLE DETECTION CONTROL UNIT" system has been developed for the models:

- Explorer V
- Taurus VI

[EUROPEAN
Market](#)[NORTH AMERICAN
Market](#)[BRAZILIAN
Market](#)[INDIAN
Market](#)

A new diagnosis of the "HEADLIGHT ADJUSTMENT" system has been developed for the models:

- Escape III
- Fiesta VII

A new diagnosis of the "PETROL INJECTION" system has been developed for the models:

- Flex
- Focus III
- Focus IV
- Taurus V
- Taurus VI

A new diagnosis of the "TYRE PRESSURE" system has been developed for the models:

- Edge I
- Escape I
- Escape II
- Expedition III
- Expedition III EL/MAX
- Explorer IV
- Explorer Sport Trac
- Flex
- Maverick
- Mustang V
- Taurus V
- Taurus VI

The diagnosis of the "DIESEL INJECTION" system has been updated for the model:

- Ranger

A new diagnosis of the "CRUISE CONTROL" system has been developed for the model:

- Edge I

The diagnosis of the "360° CAMERA" system has been updated for the models:

- Edge II
- Expedition IV
- Expedition IV MAX
- Expedition V
- F150

[Link](#)[Coverage of Makes](#)

HONDA

New models have been created and the related diagnosis has been added:

- Jazz [20>]
- Fit [20>]
- Insight [19>]
- Passport [19>]

The diagnosis of the "HYBRID SYSTEM" has been updated for the models:

- Accord IX
- Accord X
- Civic IX
- CR-V
- CR-Z
- Insight

The diagnosis of the "PETROL INJECTION" system has been updated for the models:

- Civic XI / X
- Fit
- Insight
- Jazz
- Passport

HYUNDAI

New models have been created and the related diagnosis has been added:

- Kauai / EV / Hybrid [19>]
- Veloster [19>];

New diagnostic systems have been developed for the model "Elantra":

- BLIND SPOT MODULE
- POWER STEERING
- PRE-CRASH SYSTEM
- MULTIFUNCTION CAMERA

New diagnostic systems have been developed for the model "Santa Fe":

- IMMOBILISER
- HEADLIGHT ADJUSTMENT

New diagnostic systems have been developed for the model "Sonata VII":

- HEADLIGHT ADJUSTMENT

[EUROPEAN
Market](#)[NORTH AMERICAN
Market](#)[BRAZILIAN
Market](#)[INDIAN
Market](#)

• CRUISE CONTROL

The diagnosis of the "DC/DC CONVERTER" system has been updated for the models:

- Ioniq
- Kona

The diagnosis of the "TYRE PRESSURE" system has been updated for the models:

- Genesis
- Sonata V
- Tiburon
- Tucson
- Veloster

INFINITI

A new diagnosis of the "ABS" system has been developed for the models:

- M
- QX56

A new diagnosis of the "BODY COMPUTER" system has been developed for the models:

- EX
- FX
- G
- M
- Q60
- Q70
- QX50
- QX56
- QX60
- QX70
- QX80

A new diagnosis of the "POWER MODULE" system has been developed for the models:

- EX
- FX
- G
- M
- QX50
- QX56

[Link](#)[Coverage of Makes](#)

- QX60
- QX80

A new diagnosis of the "TYRE PRESSURE" system has been developed for the models:

- EX
- FX
- G
- M
- Q50
- Q60
- Q70
- QX50
- QX56
- QX60
- QX70
- QX80

The diagnosis of the "360° CAMERA" system has been updated for the models:

- Q50
- Q60
- Q70
- QX50
- QX60
- QX70
- QX80

JAGUAR

New diagnostic systems have been developed for the model "I-Pace":

- BRAKE BOOSTER
- BATTERY CHARGER CONTROL MODULE
- HEADLIGHT ADJUSTMENT
- MULTIMEDIA SYSTEM

A new diagnosis of the "PASSENGER SIDE SEAT ADJUSTMENT" system has been developed for the models:

- F-Pace
- I-Pace
- XE

[EUROPEAN
Market](#)[NORTH AMERICAN
Market](#)[BRAZILIAN
Market](#)[INDIAN
Market](#)

- XF

JEEP

A new model has been created and the related diagnosis has been added:

- Gladiator [19>]

A new diagnosis of the "SERVICE WARNING LIGHT" system has been developed for the models:

- Compass
- Renegade

KIA

A new model has been created and the related diagnosis has been added:

- Soul EV [20>]

New diagnostic systems have been developed for the model "Optima IV":

- SEAT ADJUSTMENT, DRIVER'S SIDE
- PRE-CRASH SYSTEM

New diagnostic systems have been developed for the model "Soul EV":

- ACTIVE AIR FLAP
- ELECTRIC MOTOR CONTROL UNIT
- A/C
- IMMOBILISER
- PETROL INJECTION
- GEAR SELECTOR LEVER
- BATTERY CONTROL MODULE
- HIGH-VOLTAGE BATTERY CHARGE MANAGEMENT

The diagnosis of the "PARK ASSIST" system has been updated for the models:

- Mohave
- Morning
- Picanto
- ProCeed
- Quoris
- Stonic
- XCeed
- Cadenza
- Niro

[Link](#)[Coverage of Makes](#)

- Optima
- Rio
- Sedona
- Sportage
- Stinger

The diagnosis of the "MULTIFUNCTION CAMERA" system has been updated for the models:

- Carens
- Carnival
- Stonic
- Optima
- Rondo
- Rio
- Sedona
- Sportage

The diagnosis of the "REAR-VIEW CAMERA" system has been updated for the models:

- Cadenza
- Niro
- Soul
- Sportage

LANCIA

A new engine type has been created and the related diagnosis has been added:

- 1.0i Mild Hybrid

For the model:

- Ypsilon

LAND ROVER

For the new models:

- Defender 90 / 110
- Discovery Sport
- Range Rover Evoque
- Range Rover Velar

New diagnostic systems have been developed:

- BATTERY CHARGING MODULE

[EUROPEAN
Market](#)[NORTH AMERICAN
Market](#)[BRAZILIAN
Market](#)[INDIAN
Market](#)

- MULTIMEDIA SYSTEM
- HEADLIGHT ADJUSTMENT
- MULTI-FUNCTION DISPLAY
- PASSENGER SIDE SEAT ADJUSTMENT

And many other systems have been updated, such as:

- TRAILER ECU
- A/C
- GATEWAY
- GEAR SELECTOR LEVER
- DRIVER SIDE DOOR
- PASSENGER SIDE DOOR
- DRIVER SIDE REAR DOOR
- PASSENGER SIDE REAR DOOR
- CRUISE CONTROL
- POWER STEERING
- AUDIO AMPLIFIER SYSTEM
- KEYLESS GO SYSTEM
- MULTIMEDIA SYSTEM

LEXUS

A new diagnosis of the "ABS" system has been developed for the model series:

- ES
- LS
- NX
- RC
- RX
- UX

New diagnostic systems have been developed for the UX models:

- ABS
- HEAD-UP DISPLAY
- REAR ELECTRIC MOTOR
- POWER STEERING
- START&STOP
- TELEMATIC CONTROL UNIT

[Link](#)[Coverage of Makes](#)

New diagnostic systems have been developed for the ES models:

- ABS
- ENGINE SOUND ACTUATOR
- HEAD-UP DISPLAY
- SAFETY PEDESTRIAN IMPACT
- DIGITAL EXTERIOR MIRRORS
- START&STOP

New diagnostic systems have been developed for the LS models:

- ABS
- ENGINE SOUND ACTUATOR
- BODY COMPUTER (FRONT JUNCTION BOX ELECTRONICS)
- BODY COMPUTER (REAR JUNCTION BOX ELECTRONICS)
- SEAT BELT COMMAND CONTROL UNIT
- HEAD-UP DISPLAY
- SECOND BATTERY CONTROL MODULE
- FRONT CORNER RADAR 1
- FRONT CORNER RADAR 2
- SAFETY PEDESTRIAN IMPACT
- COMFORT SYSTEM
- SUSPENSIONS
- START&STOP

MAHINDRA

A new diagnosis of the "ABS" system has been developed for the models:

- KUV100
- Marazzo
- NuvoSport N8
- Scorpio II
- Scorpio III
- TUV300
- Xylo

A new diagnosis of the "AIRBAG" system has been developed for the models:

- KUV100
- Marazzo

[EUROPEAN Market](#)[NORTH AMERICAN Market](#)[BRAZILIAN Market](#)[INDIAN Market](#)

- NuvoSport N8
- Scorpio III
- TUV300

A new diagnosis of the "BODY COMPUTER" system has been developed for the models:

- KUV100
- Marazzo
- NuvoSport N8

- Scorpio II
- Scorpio III
- TUV300

- XUV500

A new diagnosis of the "AUTOMATIC TRANSMISSION" system has been developed for the models:

- NuvoSport N8
- Scorpio III
- TUV300

A new diagnosis of the "A/C" system has been developed for the models:

- Marazzo
- Scorpio III

A new diagnosis of the "INFOTAINMENT INTERFACE" system has been developed for the models:

- KUV100
- Marazzo
- Scorpio III
- TUV300

A new diagnosis of the "IMMOBILISER" system has been developed for the models:

- Bolero
- KUV100
- NuvoSport N8
- Quanto
- Scorpio III
- Thar

A new diagnosis of the "DIESEL INJECTION" system has been developed for the models:

- KUV100
- NuvoSport N8
- Scorpio II

[Link](#)[Coverage of Makes](#)

- Scorpio III
- Thar
- TUV300
- Xylo

A new diagnosis of the "PETROL/LPG INJECTION" system has been developed for the model:

- KUV100

A new diagnosis of the "PARK ASSIST" system has been developed for the models:

- KUV100
- Scorpio III
- TUV300

A new diagnosis of the "POWER STEERING" system has been developed for the models:

- KUV100
- Marazzo

A new diagnosis of the "INSTRUMENTATION" system has been developed for the models:

- Bolero
- KUV100
- NuvoSport N8
- Marazzo
- Scorpio III
- TUV300

MAZDA

New diagnostic systems have been developed for the model CX-30 [19>]:

- ABS
- AIRBAG
- PARK ASSIST
- BODY COMPUTER
- BODY COMPUTER (JUNCTION BOX ELECTRONICS)
- VEHICLE CONNECTION CONTROL UNIT
- RIGHT HEADLIGHT CONTROL UNIT
- LEFT HEADLIGHT CONTROL UNIT
- ELECTRONIC KEY
- A/C
- DC/DC CONVERTER

[EUROPEAN
Market](#)[NORTH AMERICAN
Market](#)[BRAZILIAN
Market](#)[INDIAN
Market](#)

- BATTERY CHARGER CONTROL MODULE
- INTEGRATED STARTER GENERATOR
- DRIVER SIDE DOOR
- PASSENGER SIDE DOOR
- RADAR
- HEADLIGHT ADJUSTMENT
- FRONT RIGHT SHORT-RANGE SIDE RADAR SENSOR
- FRONT LEFT SHORT-RANGE SIDE RADAR SENSOR
- REAR RIGHT SHORT-RANGE SIDE RADAR SENSOR
- REAR LEFT SHORT-RANGE SIDE RADAR SENSOR
- POWER STEERING
- DRIVER STATUS MONITORING SYSTEM
- INSTRUMENTATION
- ADDITIONAL INSTRUMENTATION
- 360° CAMERA
- FRONT CAMERA
- AUXILIARY CONTROL UNIT
- TELEMATIC CONTROL UNIT
- TRUNK

New diagnostic systems have been developed for the model Mazda3 [19>]:

- ABS
- AIRBAG
- PARK ASSIST
- BODY COMPUTER
- BODY COMPUTER (JUNCTION BOX ELECTRONICS)
- VEHICLE CONNECTION CONTROL UNIT
- RIGHT HEADLIGHT CONTROL UNIT
- LEFT HEADLIGHT CONTROL UNIT
- ELECTRONIC KEY
- A/C
- DC/DC CONVERTER
- BATTERY CHARGER CONTROL MODULE
- INTEGRATED STARTER GENERATOR
- DRIVER SIDE DOOR

[Link](#)[Coverage of Makes](#)

- PASSENGER SIDE DOOR
- RADAR
- HEADLIGHT ADJUSTMENT
- FRONT RIGHT SHORT-RANGE SIDE RADAR SENSOR
- FRONT LEFT SHORT-RANGE SIDE RADAR SENSOR
- REAR RIGHT SHORT-RANGE SIDE RADAR SENSOR
- REAR LEFT SHORT-RANGE SIDE RADAR SENSOR
- POWER STEERING
- DRIVER STATUS MONITORING SYSTEM
- INSTRUMENTATION
- ADDITIONAL INSTRUMENTATION
- 360° CAMERA
- AUXILIARY CONTROL UNIT
- TELEMATIC CONTROL UNIT

MERCEDES-BENZ

A new model has been created and the related diagnosis has been added:

- GLA [20>]

A new diagnosis of the "FOUR-WHEEL DRIVE" system has been developed for the models:

- Class A / B
- CLA
- GLA
- GLB

A new diagnosis of the "ABS" system has been developed for the models:

- Class C / E / G
- GLC
- AMG GT

A new diagnosis of the "ANTI-THEFT" system has been developed for the models:

- Class A / B
- CLA
- GLA
- GLB
- GLE
- GLS

[EUROPEAN
Market](#)[NORTH AMERICAN
Market](#)[BRAZILIAN
Market](#)[INDIAN
Market](#)

A new diagnosis of the "AUTOMATIC TRANSMISSION" system has been developed for the models:

- Class A / B / C / E / G / S
- CLA
- CLS
- GLA
- GLB
- GLC
- GLE
- GLS
- AMG GT
- Citan

A new diagnosis of the "A/C" system has been developed for the models:

- Class V
- GLE
- GLS
- Metris
- Vito

A new diagnosis of the "TRANSFER CASE UNIT" system has been developed for the models:

- Class G
- GLE
- GLS

A new diagnosis of the "PETROL INJECTION" system has been developed for the models:

- Class A / B / C / E / S
- CLA
- CLS
- GLA
- GLB
- GLE
- GLS

A new diagnosis of the "DIESEL INJECTION" system has been developed for the models:

- Class B
- CLA
- GLA

A new diagnosis of the "SUSPENSIONS" system has been developed for the models:

[Link](#)[Coverage of Makes](#)

- Class A / B
- CLA
- GLA
- GLB

A new diagnosis of the "SOUND SYSTEM" has been developed for the models:

- Class A / B / E
- EQC
- CLA
- GLA
- GLB
- GLC
- GLE
- GLS

A new diagnosis of the "ELECTRIC TOP" system has been developed for the models:

- Class B
- GLA
- GLB
- GLE
- GLS

A new diagnosis of the "REAR-VIEW CAMERA" system has been developed for the models:

- Class A / B / C / E / S / V
- EQC
- CLA
- CLS
- GLA
- GLB
- GLC
- GLE
- GLS
- METRIS
- VITO

[EUROPEAN
Market](#)[NORTH AMERICAN
Market](#)[BRAZILIAN
Market](#)[INDIAN
Market](#)

MINI

A new model has been created and the related diagnosis has been added:

- Cooper S EV [20>]

The diagnosis of the "EV CONTROL SYSTEM" has been updated for the model:

- Mini Countryman

The diagnosis of the "PETROL INJECTION" system has been updated for the models:

- Mini Clubman
- Mini Cooper
- Mini Cabrio
- Mini Countryman

MITSUBISHI

The diagnosis of the "ACCESSORY GATEWAY" system has been updated for the model:

- Eclipse Cross

The diagnosis of the "BLIND SPOT MODULE" system has been updated for the models:

- L 200
- Montero Sport
- Pajero Sport
- Strada
- Triton

The diagnosis of the "DIESEL INJECTION" system has been updated for the models:

- Delica D:5
- Eclipse Cross

The diagnosis of the "MULTIFUNCTION CAMERA" system has been updated for the models:

- Attrage
- L 200
- Mirage
- Mirage G4
- Space Star
- Strada
- Triton

[Link](#)[Coverage of Makes](#)

NISSAN

A new diagnosis of the "ABS" system has been developed for the models:

- Armada
- Patrol GR
- Titan

A new diagnosis of the "BODY COMPUTER" system has been developed for the models:

- Altima
- Armada
- Cube
- Frontier
- Maxima
- Murano
- NP300
- Pathfinder
- Titan

A new diagnosis of the "POWER MODULE" system has been developed for the models:

- Altima
- Armada
- Navara
- Pathfinder
- Patrol GR
- Sentra
- Titan
- Versa

A new diagnosis of the "TYRE PRESSURE" system has been developed for the models:

- 370Z
- Altima
- Armada
- Cube
- Frontier
- Juke
- Leaf
- March
- Maxima

[EUROPEAN
Market](#)[NORTH AMERICAN
Market](#)[BRAZILIAN
Market](#)[INDIAN
Market](#)

- Micra
- Murano
- Navara
- Note
- NP300
- Pathfinder
- Rogue
- Sentra
- Sunny
- Teana
- Titan
- Versa

OPEL

A new model has been created and the related diagnosis has been added:

- Zafira-Life [19>]

The diagnosis of the following systems has been updated for the model Corsa-F:

- KEYLESS GO SYSTEM
- BATTERY CONTROL MODULE
- ELECTRONIC CLIMATE CONTROL COMPRESSOR
- ELECTRIC MOTOR CONTROL UNIT
- APPROACHING VEHICLE SOUND FOR PEDESTRIANS

The diagnosis of the "TYRE PRESSURE" system has been updated for the models:

- Ampera
- Ampera EV
- Astra-J
- Astra-K
- Cascada
- Insignia-A
- Insignia-B
- Karl
- Mokka
- Mokka X
- Zafira-C

[Link](#)[Coverage of Makes](#)

PEUGEOT

A new diagnosis of the "BRAKE BOOSTER" system has been developed for the models:

- 3008
- 508

A new diagnosis of the "ELECTRONIC CLIMATE CONTROL COMPRESSOR" system has been developed for the models:

- 208
- 508
- 2008
- 3008
- Partner Tepee

A new diagnosis of the "ELECTRIC MOTOR CONTROL UNIT" system has been developed for the models:

- 208
- 508
- 2008
- 3008

A new diagnosis of the "MULTI-FUNCTION DISPLAY" system has been developed for the models:

- 208
- 2008

A new diagnosis of the "BATTERY CHARGING MODULE" system has been developed for the models:

- 508
- 2008
- 3008

A new diagnosis of the "REAR ELECTRIC MOTOR" system has been developed for the models:

- 508
- 3008

A new diagnosis of the "KEYLESS GO SYSTEM" has been developed for the models:

- 208
- 2008

A new diagnosis of the "ELECTRIC DRIVE" system has been developed for the models:

- 508
- 3008
- Partner Tepee

[EUROPEAN
Market](#)[NORTH AMERICAN
Market](#)[BRAZILIAN
Market](#)[INDIAN
Market](#)

A new diagnosis of the "APPROACHING VEHICLE SOUND FOR PEDESTRIANS" system has been developed for the models:

- 208
- 508
- 2008
- 3008

RENAULT

A new model has been created and the related diagnosis has been added:

- Twingo III ZE [20>]

The diagnosis of the "NAVIGATOR" system has been updated for the models:

- Captur I / II
- Kaptur
- Clio V
- Twingo III
- Zoe II

New diagnostic systems have been developed for the model Captur II:

- ELECTRIC MOTOR CONTROL UNIT
- DC/DC CONVERTER
- BATTERY CONTROL MODULE
- ELECTRIC DRIVE
- RIGHT BLIND SPOT MODULE
- LEFT BLIND SPOT MODULE

New diagnostic systems have been developed for the model Clio V:

- ELECTRIC MOTOR CONTROL UNIT
- DC/DC CONVERTER
- BATTERY CONTROL MODULE
- ELECTRIC DRIVE
- RIGHT BLIND SPOT MODULE
- LEFT BLIND SPOT MODULE

New diagnostic systems have been developed for the model Zoe II:

- ELECTRIC MOTOR CONTROL UNIT
- BATTERY CHARGING SYSTEM
- BATTERY CONTROL MODULE

[Link](#)[Coverage of Makes](#)

The diagnosis of the "DIESEL INJECTION" system has been updated for the models:

- Grand Scenic IV
- Kadjar
- Koleos II
- Megane IV
- Scenic IV
- Talisman

SEAT

New models have been created and the related diagnosis has been added:

- Leon [20>]
- Leon Sportstourer [20>]

New diagnostic systems have been developed for the models Leon / Sportstourer [20>]:

- AIRBAG
- BRAKE BOOSTER
- LANE CHANGE ASSIST
- AUTOMATIC TRANSMISSION
- BURGLARY PROTECTION CONTROL UNIT
- ELECTRONIC KEY
- DISTANCE CONTROL
- INJECTION 3/BATTERY ENERGY CONTROL MODULE 2
- START/CHARGING CONTROL MODULE
- SWITCHOVER BOARD
- POWER STEERING
- INFORMATION ELECTRONIC SYSTEM 1
- SUSPENSIONS
- SOUND SYSTEM
- INSTRUMENTATION
- REAR-VIEW CAMERA

The diagnosis of the following systems has been updated for the model Tarraco:

- LANE CHANGE ASSIST
- SWITCHOVER BOARD
- REAR-VIEW CAMERA

[EUROPEAN
Market](#)[NORTH AMERICAN
Market](#)[BRAZILIAN
Market](#)[INDIAN
Market](#)

A new diagnosis of the "A/C" system has been developed for the models:

- Tarraco
- Ateca
- Leon

SKODA

New models have been created and the related diagnosis has been added:

- Octavia [20>]
- Octavia Kombi [20>]

New diagnostic systems have been developed for the models Octavia / Kombi [20>]:

- AIRBAG
- BRAKE BOOSTER
- LANE CHANGE ASSIST
- AUTOMATIC TRANSMISSION
- BURGLARY PROTECTION CONTROL UNIT
- ELECTRONIC KEY
- DISTANCE CONTROL
- INJECTION 3/BATTERY ENERGY CONTROL MODULE 2
- PETROL INJECTION
- START/CHARGING CONTROL MODULE
- MULTIFUNCTION MODULE
- SWITCHOVER BOARD
- POWER STEERING
- INFORMATION ELECTRONIC SYSTEM 1
- SUSPENSIONS
- SOUND SYSTEM
- INSTRUMENTATION
- REAR-VIEW CAMERA

The diagnosis of the "LANE CHANGE ASSIST" system has been updated for the models:

- Kamiq
- Karoq
- Kodiaq
- Scala

The diagnosis of the "PETROL INJECTION" system has been updated for the models:

[Link](#)[Coverage of Makes](#)

- Karoq
- Kodiaq

The diagnosis of the "SWITCHOVER BOARD" system has been updated for the models:

- Karoq
- Kodiaq

The diagnosis of the "REAR-VIEW CAMERA" system has been updated for the models:

- Karoq
- Kodiaq

SSANGYONG

New models have been created and the related diagnosis has been added:

- Korando [19>]
- Tivoli [19>]
- XLV [19>]

New diagnostic systems have been developed for the model Korando [19>]:

- ABS
- AIRBAG
- BODY COMPUTER
- AUTOMATIC TRANSMISSION
- WIRELESS PHONE BATTERY CHARGER
- RESCUE CALL
- ELECTRONIC KEY
- A/C
- GATEWAY
- PETROL INJECTION
- DIESEL INJECTION
- BLIND SPOT MODULE
- TYRE PRESSURE
- TRANSFER CASE
- PRE-CRASH SYSTEM
- REDUCING AGENT METERING SYSTEM
- MULTIFUNCTION CAMERA
- TRUNK

[EUROPEAN
Market](#)[NORTH AMERICAN
Market](#)[BRAZILIAN
Market](#)[INDIAN
Market](#)

New diagnostic systems have been developed for the model Tivoli [19>]:

- ABS
- AIRBAG
- BODY COMPUTER
- AUTOMATIC TRANSMISSION
- WIRELESS PHONE BATTERY CHARGER
- RESCUE CALL
- ELECTRONIC KEY
- GATEWAY
- PETROL INJECTION
- DIESEL INJECTION
- BLIND SPOT MODULE
- TYRE PRESSURE
- TRANSFER CASE
- REDUCING AGENT METERING SYSTEM
- MULTIFUNCTION CAMERA

New diagnostic systems have been developed for the model XLV [19>]:

- ABS
- AIRBAG
- BODY COMPUTER
- AUTOMATIC TRANSMISSION
- WIRELESS PHONE BATTERY CHARGER
- RESCUE CALL
- ELECTRONIC KEY
- GATEWAY
- PETROL INJECTION
- DIESEL INJECTION
- BLIND SPOT MODULE
- TYRE PRESSURE
- TRANSFER CASE
- REDUCING AGENT METERING SYSTEM
- MULTIFUNCTION CAMERA

[Link](#)[Coverage of Makes](#)

SUZUKI

The diagnosis of the “BLIND SPOT MODULE” system has been updated for the models:

- Vitara
- Swift

The diagnosis of the following systems has been updated for the models SX4 S-Cross [16>] and Vitara [16>]:

- DC/DC CONVERTER
- PETROL INJECTION
- INTEGRATED STARTER GENERATOR
- HYBRID BATTERY SYSTEM

TOYOTA

New models have been created and the related diagnosis has been added:

- RAV4 Plug-in/ Prime Plug-in [20>]
- Yaris / GR [20>]
- Harrier [20>]

New diagnostic systems have been developed for the model Yaris [20>]:

- ABS
- ACCESSORY GATEWAY
- APPROACHING VEHICLE SOUND FOR PEDESTRIANS
- BODY COMPUTER
- BODY COMPUTER (FRONT JUNCTION BOX ELECTRONICS)
- BODY COMPUTER (JUNCTION BOX ELECTRONICS)
- BODY COMPUTER (HEATER)
- A/C
- HEAD-UP DISPLAY
- BLIND SPOT MODULE
- POWER SOURCE CONTROL
- TYRE PRESSURE
- STEERING ANGLE SENSOR
- BRAKING SYSTEM
- START&STOP
- TELEMATIC CONTROL UNIT

A new diagnosis of the “FOUR-WHEEL DRIVE” system has been developed for the models:

- Highlander

[EUROPEAN
Market](#)[NORTH AMERICAN
Market](#)[BRAZILIAN
Market](#)[INDIAN
Market](#)

- Kluger
- RAV4

A new diagnosis of the “ABS” system has been developed for the models:

- 4-Runner
- Auris
- Corolla
- Fortuner
- Harrier
- Highlander
- Hi-Lux
- Innova
- Kijang Innova
- Kluger
- Levin
- RAV4

A new diagnosis of the “ACCESSORY GATEWAY” system has been developed for the models:

- C-HR
- Corolla
- Highlander
- Kluger

A new diagnosis of the “BRAKING SYSTEM” has been developed for the model:

- Highlander

A new diagnosis of the “HEAD-UP DISPLAY” system has been developed for the models:

- Auris
- Avalon
- Camry
- Corolla
- Harrier
- Highlander
- Kluger
- Levin
- RAV4

A new diagnosis of the “START&STOP” system has been developed for the models:

- Alphard

[Link](#)[Coverage of Makes](#)

- Avalon
- Camry
- C-HR
- Corolla
- Highlander
- Kluger
- Land Cruiser
- Levin
- Pixis
- RAV4
- Vellfire

A new diagnosis of the "POWER STEERING" system has been developed for the models:

- Corolla
- Hi-Lux
- Levin
- Pixis
- RAV4

A new diagnosis of the "TELEMATIC CONTROL UNIT" system has been developed for the models:

- 4-Runner
- Auris
- Camry
- C-HR
- Corolla
- Highlander
- Levin
- RAV4

VOLKSWAGEN

New models have been created and the related diagnosis has been added:

- ID.3 [20>]
- T-Roc [20>] Cabriolet

New diagnostic systems have been developed for the model Golf VIII [20>]:

- AIRBAG
- BRAKE BOOSTER

[EUROPEAN
Market](#)[NORTH AMERICAN
Market](#)[BRAZILIAN
Market](#)[INDIAN
Market](#)

- LANE CHANGE ASSIST
- AUTOMATIC TRANSMISSION
- BURGLARY PROTECTION CONTROL UNIT
- ELECTRONIC KEY
- DISTANCE CONTROL
- HEAD-UP DISPLAY
- INJECTION 3/BATTERY ENERGY CONTROL MODULE 2
- PETROL INJECTION
- START/CHARGING CONTROL MODULE
- MULTIFUNCTION MODULE
- SWITCHOVER BOARD
- POWER STEERING
- INFORMATION ELECTRONIC SYSTEM 1
- SUSPENSIONS
- SOUND SYSTEM
- INSTRUMENTATION
- REAR-VIEW CAMERA

New diagnostic systems have been developed for the model ID.3 [20>]:

- AIRBAG
- LANE CHANGE ASSIST
- BURGLARY PROTECTION CONTROL UNIT
- ELECTRONIC KEY
- POWER STEERING
- SUSPENSIONS
- SOUND SYSTEM

A new diagnosis of the "A/C" system has been developed for the models:

- Golf VII
- Tiguan
- Touran

The diagnosis of the "SWITCHOVER BOARD" system has been updated for the models:

- Arteon
- Atlas
- Golf VII
- Jetta

[Link](#)[Coverage of Makes](#)

- Lamando
- Passat B8
- Polo
- T-Cross
- Teramont
- Tiguan
- Touran
- T-Roc

The diagnosis of the "INSTRUMENTATION" system has been updated for the models:

- Ameo
- Polo
- Vento
- Amarok
- Golf VIII
- Jetta

The diagnosis of the "LANE CHANGE ASSIST" system has been updated for the models:

- Arteon
- Atlas
- Bora
- Eos
- Golf VII
- Golf VIII
- Jetta
- Lamando
- Passat B8
- Polo
- T-Cross
- Teramont
- Tiguan
- Touran
- T-Roc

The diagnosis of the "REAR-VIEW CAMERA" system has been updated for the models:

- Arteon
- Atlas

[EUROPEAN
Market](#)[NORTH AMERICAN
Market](#)[BRAZILIAN
Market](#)[INDIAN
Market](#)

- Golf VII
- Golf VIII
- Jetta
- Passat B8
- Teramont
- Tiguan
- Touareg
- Touran

VOLVO

The diagnosis of the "REAR-VIEW CAMERA" system has been updated for the models:

- S60 II L
- S80 II L
- S60 II
- S80 II
- V40
- V60 I
- V70 III
- XC60 I
- CX70 II

[Link](#)[Coverage of Makes](#)

EUROPEAN Market

SUPERCAR

BENTLEY

The diagnosis of the "LANE CHANGE ASSIST" system has been updated for the models:

- Bentayga
- Continental

The diagnosis of the "PARKING BRAKE" system has been updated for the models:

- Continental
- Flying Spur

The diagnosis of the "RADIATOR FIGURE CONTROL" system has been updated for the models:

- Continental
- Flying Spur

The diagnosis of the "POWER STEERING" system has been updated for the models:

- Bentayga
- Continental

The diagnosis of the "REAR-VIEW CAMERA" system has been updated for the models:

- Bentayga
- Continental
- Flying Spur
- Mulsanne

BUGATTI

New diagnostic systems have been developed for the model Chiron:

- AUTOMATIC TRANSMISSION
- GATEWAY

CHEVROLET

The diagnosis of the "TYRE PRESSURE" system has been updated for the models:

- Corvette C7 Z06
- Corvette C7 Stingray

A new diagnosis of the "CD MULTIREADER" system has been developed for the model:

[EUROPEAN
Market](#)[NORTH AMERICAN
Market](#)[BRAZILIAN
Market](#)[INDIAN
Market](#)

- Corvette C6

FERRARI

New models have been created and the related diagnosis has been added:

- 488 [18>]
- F8 Tributo [19>]
- Monza SP [19>]
- Portofino [17>]

FORD

New diagnostic systems have been developed for the model FORD GT:

- ABS
- AIRBAG
- A/C
- PETROL INJECTION
- COMFORT SYSTEM
- INSTRUMENTATION

LAMBORGHINI

The following systems have been created and added to the new model Aventador [19>] LP 770-4 SVJ Roadster:

- ABS
- AIRBAG
- PARK ASSIST
- RADIO
- ENTRY AND START AUTHORISATION
- AUTOMATIC TRANSMISSION
- AERODYNAMIC CONTROL UNIT
- A/C
- ENGINE ELECTRICAL SYSTEM CONNECTION
- STEERING WHEEL ELECTRONICS
- PARKING BRAKE
- INJECTION 2
- PETROL INJECTION

[Link](#)[Coverage of Makes](#)

- CAN LINE
- DRIVER SIDE DOOR
- PASSENGER SIDE DOOR
- TYRE PRESSURE
- BATTERY ADJUSTMENT (GATEWAY)
- STEERING WHEELS
- STEERING WHEELS 2
- SWITCHOVER BOARD
- ACTIVE POWER STEERING
- COMFORT SYSTEM
- CHASSIS MANAGEMENT SYSTEM
- INFORMATION ELECTRONIC SYSTEM 1
- SUSPENSIONS
- INSTRUMENTATION
- REAR-VIEW CAMERA
- FOUR-WHEEL DRIVE

New diagnostic systems have been developed for the model Urus:

- RIGHT HEADLIGHT CONTROL UNIT
- LEFT HEADLIGHT CONTROL UNIT
- SWITCHOVER BOARD
- SLIDING SUNROOF

The diagnosis of the following systems has been updated for the model Urus:

- POWER STEERING
- REAR-VIEW CAMERA

MASERATI

The diagnosis of the "FRONT CAMERA" system has been updated for the following models:

- Ghibli
- Ghibli Diesel
- Ghibli S
- Ghibli S Q4
- Levante
- Levante Diesel
- Levante S

[EUROPEAN
Market](#)[NORTH AMERICAN
Market](#)[BRAZILIAN
Market](#)[INDIAN
Market](#)

- Levante Trofeo
- Quattroporte
- Quattroporte Diesel
- Quattroporte GTS
- Quattroporte S
- Quattroporte S Q4

The diagnosis of the "RADAR" system has been updated for the models:

- Levante
- Levante Diesel
- Levante S
- Levante Trofeo

PORSCHE

The diagnosis of the following systems has been updated for the model 911:

- INSTRUMENTATION
- REAR-VIEW CAMERA

The diagnosis of the following system has been updated for the model Boxster:

- INSTRUMENTATION

The diagnosis of the following systems has been updated for the model Cayenne:

- INSTRUMENTATION
- REAR-VIEW CAMERA
- BATTERY CHARGER CONTROL MODULE

The diagnosis of the following system has been updated for the model Cayman:

- INSTRUMENTATION

The diagnosis of the following system has been updated for the model Macan:

- REAR-VIEW CAMERA

The diagnosis of the following systems has been updated for the model Panamera:

- LANE CHANGE ASSIST
- STEERING WHEEL ELECTRONICS
- REAR-VIEW CAMERA

New diagnostic systems have been developed for the model 911:

- PETROL INJECTION
- SWITCHOVER BOARD

[Link](#)[Coverage of Makes](#)

ROLLS-ROYCE

The diagnosis of the "360° CAMERA" system has been updated for the models:

- Dawn
- Ghost
- Wraith

EUROPEAN
MarketNORTH AMERICAN
MarketBRAZILIAN
MarketINDIAN
Market

NORTH AMERICAN Market

AUDI

New models have been created and the related diagnosis has been added:

- A3 Sedan
- A6
- E-Tron Sportback
- RS6
- RS7
- RSQ8]
- S8
- SQ8

New diagnostic systems have been developed for the model A3 Sedan:

- AIRBAG
- BRAKE BOOSTER
- LANE CHANGE ASSIST
- AUTOMATIC TRANSMISSION
- BURGLARY PROTECTION CONTROL UNIT
- ELECTRONIC KEY
- DISTANCE CONTROL
- INJECTION 3/BATTERY ENERGY CONTROL MODULE 2
- START/CHARGING CONTROL MODULE
- SWITCHOVER BOARD
- HEAD-UP DISPLAY
- POWER STEERING
- INFORMATION ELECTRONIC SYSTEM 1
- SUSPENSIONS
- SOUND SYSTEM
- INSTRUMENTATION
- REAR-VIEW CAMERA

A new diagnosis has been developed for the "RIGHT HEADLIGHT CONTROL UNIT" and "LEFT HEADLIGHT CONTROL UNIT" systems for the entire range currently on the market.

A new diagnosis of the "PETROL INJECTION" system has been developed for the models:

[Link](#)[Coverage of Makes](#)

- RS6
- RS7
- RSQ8

The diagnosis of the "HIGH VOLTAGE CONVERTER" system has been updated for the models:

- A6 / S6 / RS6
- A7 / S7 / RS7
- E-Tron / E-Tron Sportback
- Q8 / SQ8 / RSQ8

The diagnosis of the "BATTERY CHARGER CONTROL MODULE" system has been updated for the models:

- A3
- A6
- A7
- Q8 / SQ8 / RSQ8

The diagnosis of the "SWITCHOVER BOARD" system has been updated for the models:

- A3 / S3 / RS3
- Q3
- TT

BMW

New models have been created and the related diagnosis has been added:

- Series 2
- Series 8
- X5
- X6
- X6 M

The diagnosis of the "PETROL INJECTION" system has been updated for the models:

- Series 3 / 5 / 7 / 8
- i8
- X1 / X2 / X3 / X4 / X5 / X7
- Z4

The diagnosis of the "BATTERY ADJUSTMENT" system has been updated for the models:

- Series 5 / 7
- X3 / X4 / X5

The diagnosis of the "EV CONTROL SYSTEM" has been updated for the models:

[EUROPEAN Market](#)[NORTH AMERICAN Market](#)[BRAZILIAN Market](#)[INDIAN Market](#)

- Series 2 / 3 / 5 / 7
- i8
- X5

The diagnosis of the "360° CAMERA" system has been updated for the models:

- Series 2 / 3 / 4 / 5 / 7 / 8
- i3 / i8
- X1 / X2 / X3 / X4 / X5 / X6 / X7

BUICK

New diagnostic systems have been developed for the model LaCrosse:

- TOUCH CONTROLLER
- PETROL INJECTION
- PHONE

The diagnosis of the "TYRE PRESSURE" system has been updated for the models:

- Allure
- LaCrosse

CADILLAC

A new diagnosis of the "PETROL INJECTION" system has been developed for the models:

- ATS
- CTS
- XT5

A new diagnosis of the "FRONT CAMERA" system has been developed for the model:

- CT6

CHEVROLET

A new diagnosis of the "PETROL INJECTION" system has been developed for the models:

- Blazer
- Camaro
- Colorado

A new diagnosis of the "DIESEL INJECTION" system has been developed for the model:

- Colorado

A new diagnosis of the "FRONT CAMERA" system has been developed for the models:

- Suburban
- Tahoe

[Link](#)[Coverage of Makes](#)

The diagnosis of the "TYRE PRESSURE" system has been updated for the models:

- Aveo
- Camaro
- Cruze
- Malibu
- Spark
- Trax
- Volt

The diagnosis of the "DIESEL INJECTION" system has been updated for the models:

- Trailblazer
- Colorado

DODGE

A new diagnosis of the "PETROL INJECTION" system has been developed for the model:

- H100 Wagon

The diagnosis of the "PRE-CRASH SYSTEM" has been updated for the model:

- Attitude

FORD

A new diagnosis of the "FOUR-WHEEL DRIVE" system has been developed for the models:

- Edge II
- Escape IV
- Explorer VI
- Kuga III

A new diagnosis of the "ABS" system has been developed for the models:

- Flex
- Taurus V
- Taurus VI

A new diagnosis of the "AIRBAG" system has been developed for the models:

- Contour
- Crown Victoria
- Escape I
- Escort
- Excursion

[EUROPEAN
Market](#)[NORTH AMERICAN
Market](#)[BRAZILIAN
Market](#)[INDIAN
Market](#)

- Expedition I
- Expedition II
- Explorer II
- Explorer III
- Explorer Sport Trac
- F150
- Five Hundred
- Freestyle
- Maverick
- Mustang IV
- Taurus IV
- Taurus V
- Taurus VI
- Thunderbird XI
- Windstar
- Flex
- Freestar

A new diagnosis of the "AUTOMATIC TRANSMISSION" system has been developed for the models:

- Edge I
- Expedition III
- Expedition III EL/MAX
- Explorer IV
- Explorer Sport Trac
- Five Hundred
- Flex
- Focus IV
- Freestyle
- Taurus V
- Taurus VI

A new diagnosis of the "A/C" system has been developed for the models:

- Expedition III
- Expedition III EL/MAX

A new diagnosis of the "LEFT / RIGHT SIDE OBSTACLE DETECTION CONTROL UNIT" system has been developed for the models:

[Link](#)[Coverage of Makes](#)

- Explorer V
- Taurus VI

A new diagnosis of the “HEADLIGHT ADJUSTMENT” system has been developed for the models:

- Escape III
- Fiesta VII

A new diagnosis of the “PETROL INJECTION” system has been developed for the models:

- Flex
- Focus III
- Focus IV
- Taurus V
- Taurus VI

A new diagnosis of the “TYRE PRESSURE” system has been developed for the models:

- Edge I
- Escape I
- Escape II
- Expedition III
- Expedition III EL/MAX
- Explorer IV
- Explorer Sport Trac
- Flex
- Maverick
- Mustang V
- Taurus V
- Taurus VI

The diagnosis of the “DIESEL INJECTION” system has been updated for the model:

- Ranger

A new diagnosis of the “CRUISE CONTROL” system has been developed for the model:

- Edge I

The diagnosis of the “360° CAMERA” system has been updated for the models:

- Edge II
- Expedition IV
- Expedition IV MAX
- Expedition V
- F150

[EUROPEAN Market](#)[NORTH AMERICAN Market](#)[BRAZILIAN Market](#)[INDIAN Market](#)

GMC

A new diagnosis of the "PETROL INJECTION" system has been developed for the model:

- Acadia

A new diagnosis of the "FRONT CAMERA" system has been developed for the models:

- Yukon
- Yukon XL

HONDA

New models have been created and the related diagnosis has been added:

- Fit [20>]
- Insight [19>]
- Passport [19>]

The diagnosis of the "HYBRID SYSTEM" has been updated for the models:

- Accord IX
- Accord X
- Civic IX
- CR-V
- CR-Z
- Insight

The diagnosis of the "PETROL INJECTION" system has been updated for the models:

- Civic XI / X
- Fit
- Insight
- Passport

HYUNDAI

New models have been created and the related diagnosis has been added:

- Kauai / EV / Hybrid [19>]
- Veloster [19>];

New diagnostic systems have been developed for the model "Elantra":

- BLIND SPOT MODULE
- POWER STEERING
- PRE-CRASH SYSTEM

[Link](#)[Coverage of Makes](#)

- MULTIFUNCTION CAMERA

New diagnostic systems have been developed for the model "Santa Fe":

- IMMOBILISER
- HEADLIGHT ADJUSTMENT

New diagnostic systems have been developed for the model "Sonata VII":

- HEADLIGHT ADJUSTMENT
- CRUISE CONTROL

The diagnosis of the "DC/DC CONVERTER" system has been updated for the models:

- Ioniq
- Kona

The diagnosis of the "TYRE PRESSURE" system has been updated for the models:

- Genesis
- Sonata V
- Tiburon
- Tucson
- Veloster

INFINITI

A new diagnosis of the "ABS" system has been developed for the models:

- M
- QX56

A new diagnosis of the "BODY COMPUTER" system has been developed for the models:

- EX
- FX
- G
- M
- Q60
- Q70
- QX50
- QX56
- QX60
- QX70
- QX80

A new diagnosis of the "POWER MODULE" system has been developed for the models:

[EUROPEAN
Market](#)[NORTH AMERICAN
Market](#)[BRAZILIAN
Market](#)[INDIAN
Market](#)

- EX
- FX
- G
- M
- QX50
- QX56
- QX60
- QX80

A new diagnosis of the "TYRE PRESSURE" system has been developed for the models:

- EX
- FX
- G
- M
- Q50
- Q60
- Q70
- QX50
- QX56
- QX60
- QX70
- QX80

The diagnosis of the "360° CAMERA" system has been updated for the models:

- Q50
- Q60
- Q70
- QX50
- QX60
- QX70
- QX80

JAGUAR

New diagnostic systems have been developed for the model "I-Pace":

- BRAKE BOOSTER
- BATTERY CHARGER CONTROL MODULE

[Link](#)[Coverage of Makes](#)

- HEADLIGHT ADJUSTMENT
- MULTIMEDIA SYSTEM

A new diagnosis of the "PASSENGER SIDE SEAT ADJUSTMENT" system has been developed for the models:

- F-Pace
- I-Pace
- XE
- XF

JEEP

A new model has been created and the related diagnosis has been added:

- Gladiator [19>]

A new diagnosis of the "SERVICE WARNING LIGHT" system has been developed for the models:

- Compass
- Renegade

KIA

A new model has been created and the related diagnosis has been added:

- Soul EV [20>]

New diagnostic systems have been developed for the model "Optima IV":

- SEAT ADJUSTMENT, DRIVER'S SIDE
- PRE-CRASH SYSTEM

New diagnostic systems have been developed for the model "Soul EV":

- ACTIVE AIR FLAP
- ELECTRIC MOTOR CONTROL UNIT
- A/C
- IMMOBILISER
- PETROL INJECTION
- GEAR SELECTOR LEVER
- BATTERY CONTROL MODULE
- HIGH-VOLTAGE BATTERY CHARGE MANAGEMENT

The diagnosis of the "PARK ASSIST" system has been updated for the models:

- Mohave
- Morning
- Picanto

[EUROPEAN Market](#)[NORTH AMERICAN Market](#)[BRAZILIAN Market](#)[INDIAN Market](#)

- ProCeed
- Quoris
- Stonic
- XCeed
- Cadenza
- Niro
- Optima
- Rio
- Sedona
- Sportage
- Stinger

The diagnosis of the "MULTIFUNCTION CAMERA" system has been updated for the models:

- Carens
- Carnival
- Stonic
- Optima
- Rondo
- Rio
- Sedona
- Sportage

The diagnosis of the "REAR-VIEW CAMERA" system has been updated for the models:

- Cadenza
- Niro
- Soul
- Sportage

LAND ROVER

For the new models:

- Defender 90 / 110
- Discovery Sport
- Range Rover Evoque
- Range Rover Velar

New diagnostic systems have been developed:

- BATTERY CHARGING MODULE

[Link](#)[Coverage of Makes](#)

- MULTIMEDIA SYSTEM
- HEADLIGHT ADJUSTMENT
- MULTI-FUNCTION DISPLAY
- PASSENGER SIDE SEAT ADJUSTMENT

And many other systems have been updated, such as:

- TRAILER ECU
- A/C
- GATEWAY
- GEAR SELECTOR LEVER
- DRIVER SIDE DOOR
- PASSENGER SIDE DOOR
- DRIVER SIDE REAR DOOR
- PASSENGER SIDE REAR DOOR
- CRUISE CONTROL
- POWER STEERING
- AUDIO AMPLIFIER SYSTEM
- KEYLESS GO SYSTEM
- MULTIMEDIA SYSTEM

LEXUS

A new diagnosis of the “ABS” system has been developed for the model series:

- ES
- LS
- NX
- RC
- RX
- UX

New diagnostic systems have been developed for the UX models:

- ABS
- HEAD-UP DISPLAY
- REAR ELECTRIC MOTOR
- POWER STEERING
- START&STOP
- TELEMATIC CONTROL UNIT

[EUROPEAN Market](#)[NORTH AMERICAN Market](#)[BRAZILIAN Market](#)[INDIAN Market](#)

New diagnostic systems have been developed for the ES models:

- ABS
- ENGINE SOUND ACTUATOR
- HEAD-UP DISPLAY
- SAFETY PEDESTRIAN IMPACT
- DIGITAL EXTERIOR MIRRORS
- START&STOP

New diagnostic systems have been developed for the LS models:

- ABS
- ENGINE SOUND ACTUATOR
- BODY COMPUTER (FRONT JUNCTION BOX ELECTRONICS)
- BODY COMPUTER (REAR JUNCTION BOX ELECTRONICS)
- SEAT BELT COMMAND CONTROL UNIT
- HEAD-UP DISPLAY
- SECOND BATTERY CONTROL MODULE
- FRONT CORNER RADAR 1
- FRONT CORNER RADAR 2
- SAFETY PEDESTRIAN IMPACT
- COMFORT SYSTEM
- SUSPENSIONS
- START&STOP

LINCOLN

New models have been created and the related diagnosis has been added:

- Corsair [19>]
- Aviator [19>]

A new diagnosis of the "FOUR-WHEEL DRIVE" system has been developed for the models:

- Aviator
- Corsair
- Nautilus

A new diagnosis of the "ABS" system has been developed for the models:

- Mark LT I
- MKS
- MKT

[Link](#)[Coverage of Makes](#)

A new diagnosis of the "AIRBAG" system has been developed for the models:

- Aviator
- Backwood
- Continental IX
- LS
- Mark LT I
- MKS
- Navigator I
- Navigator II
- Town Car

A new diagnosis of the "AUTOMATIC TRANSMISSION" system has been developed for the models:

- MKS
- MKT
- MKX I
- Navigator II
- Navigator III
- Navigator III L

A new diagnosis of the "A/C" system has been developed for the models:

- Navigator III
- Navigator III L

A new diagnosis of the "LEFT / RIGHT SIDE OBSTACLE DETECTION CONTROL UNIT" system has been developed for the models:

- MKS
- MKT
- MKX I

A new diagnosis of the "STEERING WHEEL ELECTRONICS" system has been developed for the models:

- Continental
- MKX II
- Nautilus

A new diagnosis of the "PETROL INJECTION" system has been developed for the models:

- MKS
- MKT

A new diagnosis of the "TYRE PRESSURE" system has been developed for the models:

- MKS

[EUROPEAN Market](#)[NORTH AMERICAN Market](#)[BRAZILIAN Market](#)[INDIAN Market](#)

- MKT
- MKX I
- Navigator III
- Navigator III L

The diagnosis of the "360° CAMERA" system has been updated for the models:

- Continental X
- MKX II
- Nautilus
- Navigator IV

MAZDA

New diagnostic systems have been developed for the model CX-30 [19>]:

- ABS
- AIRBAG
- PARK ASSIST
- BODY COMPUTER
- BODY COMPUTER (JUNCTION BOX ELECTRONICS)
- VEHICLE CONNECTION CONTROL UNIT
- RIGHT HEADLIGHT CONTROL UNIT
- LEFT HEADLIGHT CONTROL UNIT
- ELECTRONIC KEY
- A/C
- DC/DC CONVERTER
- BATTERY CHARGER CONTROL MODULE
- INTEGRATED STARTER GENERATOR
- DRIVER SIDE DOOR
- PASSENGER SIDE DOOR
- RADAR
- HEADLIGHT ADJUSTMENT
- FRONT RIGHT SHORT-RANGE SIDE RADAR SENSOR
- FRONT LEFT SHORT-RANGE SIDE RADAR SENSOR
- REAR RIGHT SHORT-RANGE SIDE RADAR SENSOR
- REAR LEFT SHORT-RANGE SIDE RADAR SENSOR
- POWER STEERING

[Link](#)[Coverage of Makes](#)

- DRIVER STATUS MONITORING SYSTEM
- INSTRUMENTATION
- ADDITIONAL INSTRUMENTATION
- 360° CAMERA
- FRONT CAMERA
- AUXILIARY CONTROL UNIT
- TELEMATIC CONTROL UNIT
- TRUNK

New diagnostic systems have been developed for the model Mazda3 [19>]:

- ABS
- AIRBAG
- PARK ASSIST
- BODY COMPUTER
- BODY COMPUTER (JUNCTION BOX ELECTRONICS)
- VEHICLE CONNECTION CONTROL UNIT
- RIGHT HEADLIGHT CONTROL UNIT
- LEFT HEADLIGHT CONTROL UNIT
- ELECTRONIC KEY
- A/C
- DC/DC CONVERTER
- BATTERY CHARGER CONTROL MODULE
- INTEGRATED STARTER GENERATOR
- DRIVER SIDE DOOR
- PASSENGER SIDE DOOR
- RADAR
- HEADLIGHT ADJUSTMENT
- FRONT RIGHT SHORT-RANGE SIDE RADAR SENSOR
- FRONT LEFT SHORT-RANGE SIDE RADAR SENSOR
- REAR RIGHT SHORT-RANGE SIDE RADAR SENSOR
- REAR LEFT SHORT-RANGE SIDE RADAR SENSOR
- POWER STEERING
- DRIVER STATUS MONITORING SYSTEM
- INSTRUMENTATION
- ADDITIONAL INSTRUMENTATION

[EUROPEAN
Market](#)[NORTH AMERICAN
Market](#)[BRAZILIAN
Market](#)[INDIAN
Market](#)

- 360° CAMERA
- AUXILIARY CONTROL UNIT
- TELEMATIC CONTROL UNIT

MERCEDES-BENZ

A new model has been created and the related diagnosis has been added:

- GLA [20>]

A new diagnosis of the "FOUR-WHEEL DRIVE" system has been developed for the models:

- Class A / B
- CLA
- GLA
- GLB

A new diagnosis of the "ABS" system has been developed for the models:

- Class C / E / G
- GLC
- AMG GT

A new diagnosis of the "ANTI-THEFT" system has been developed for the models:

- Class A / B
- CLA
- GLA
- GLB
- GLE
- GLS

A new diagnosis of the "AUTOMATIC TRANSMISSION" system has been developed for the models:

- Class A / B / C / E / G / S
- CLA
- CLS
- GLA
- GLB
- GLC
- GLE
- GLS
- AMG GT
- Citan

[Link](#)[Coverage of Makes](#)

A new diagnosis of the "A/C" system has been developed for the models:

- Class V
- GLE
- GLS
- Metris
- Vito

A new diagnosis of the "TRANSFER CASE UNIT" system has been developed for the models:

- Class G
- GLE
- GLS

A new diagnosis of the "PETROL INJECTION" system has been developed for the models:

- Class A / B / C / E / S
- CLA
- CLS
- GLA
- GLB
- GLE
- GLS

A new diagnosis of the "DIESEL INJECTION" system has been developed for the models:

- Class B
- CLA
- GLA

A new diagnosis of the "SUSPENSIONS" system has been developed for the models:

- Class A / B
- CLA
- GLA
- GLB

A new diagnosis of the "SOUND SYSTEM" has been developed for the models:

- Class A / B / E
- EQC
- CLA
- GLA
- GLB
- GLC

[EUROPEAN
Market](#)[NORTH AMERICAN
Market](#)[BRAZILIAN
Market](#)[INDIAN
Market](#)

- GLE
- GLS

A new diagnosis of the “ELECTRIC TOP” system has been developed for the models:

- Class B
- GLA
- GLB
- GLE
- GLS

A new diagnosis of the “REAR-VIEW CAMERA” system has been developed for the models:

- Class A / B / C / E / S / V
- EQC
- CLA
- CLS
- GLA
- GLB
- GLC
- GLE
- GLS
- METRIS
- VITO

MITSUBISHI

The diagnosis of the “ACCESSORY GATEWAY” system has been updated for the model:

- Eclipse Cross

The diagnosis of the “BLIND SPOT MODULE” system has been updated for the models:

- Montero Sport
- Triton

The diagnosis of the “DIESEL INJECTION” system has been updated for the model:

- Eclipse Cross

The diagnosis of the “MULTIFUNCTION CAMERA” system has been updated for the models:

- Mirage
- Triton

[Link](#)[Coverage of Makes](#)

NISSAN

A new diagnosis of the “ABS” system has been developed for the models:

- Armada
- Titan

A new diagnosis of the “BODY COMPUTER” system has been developed for the models:

- Altima
- Armada
- Cube
- Frontier
- Maxima
- Murano
- Pathfinder
- Titan

A new diagnosis of the “POWER MODULE” system has been developed for the models:

- Altima
- Armada
- Pathfinder
- Sentra
- Titan
- Versa

A new diagnosis of the “TYRE PRESSURE” system has been developed for the models:

- 370Z
- Altima
- Armada
- Cube
- Frontier
- Juke
- Leaf
- Maxima
- Murano
- Pathfinder
- Rogue
- Sentra
- Titan

[EUROPEAN
Market](#)[NORTH AMERICAN
Market](#)[BRAZILIAN
Market](#)[INDIAN
Market](#)

- Versa

SUZUKI

The diagnosis of the "BLIND SPOT MODULE" system has been updated for the model:

- Swift

TOYOTA

New models have been created and the related diagnosis has been added:

- RAV4 Plug-in/ Prime Plug-in [20>]
- Yaris / GR [20>]

New diagnostic systems have been developed for the model Yaris [20>]:

- ABS
- ACCESSORY GATEWAY
- APPROACHING VEHICLE SOUND FOR PEDESTRIANS
- BODY COMPUTER
- BODY COMPUTER (FRONT JUNCTION BOX ELECTRONICS)
- BODY COMPUTER (JUNCTION BOX ELECTRONICS)
- BODY COMPUTER (HEATER)
- A/C
- HEAD-UP DISPLAY
- BLIND SPOT MODULE
- POWER SOURCE CONTROL
- TYRE PRESSURE
- STEERING ANGLE SENSOR
- BRAKING SYSTEM
- START&STOP
- TELEMATIC CONTROL UNIT

A new diagnosis of the "FOUR-WHEEL DRIVE" system has been developed for the models:

- Highlander
- RAV4

A new diagnosis of the "ABS" system has been developed for the models:

- 4-Runner
- Corolla
- Highlander

[Link](#)[Coverage of Makes](#)

- Hi-Lux
- RAV4

A new diagnosis of the "ACCESSORY GATEWAY" system has been developed for the models:

- C-HR
- Corolla
- Highlander

A new diagnosis of the "BRAKING SYSTEM" has been developed for the model:

- Highlander

A new diagnosis of the "HEAD-UP DISPLAY" system has been developed for the models:

- Avalon
- Camry
- Corolla
- Highlander
- RAV4

A new diagnosis of the "START&STOP" system has been developed for the models:

- Avalon
- Camry
- C-HR
- Corolla
- Highlander
- Land Cruiser
- RAV4

A new diagnosis of the "POWER STEERING" system has been developed for the models:

- Corolla
- Hi-Lux
- RAV4

A new diagnosis of the "TELEMATIC CONTROL UNIT" system has been developed for the models:

- 4-Runner
- Camry
- C-HR
- Corolla
- Highlander
- RAV4
- Sequoia II
- Tacoma
- Tundra

EUROPEAN
Market

NORTH AMERICAN
Market

BRAZILIAN
Market

INDIAN
Market

VOLKSWAGEN

A new model has been created and the related diagnosis has been added:

- T-Roc [20>] Cabriolet

New diagnostic systems have been developed for the model Golf VIII [20>]:

- AIRBAG
- BRAKE BOOSTER
- LANE CHANGE ASSIST
- AUTOMATIC TRANSMISSION
- BURGLARY PROTECTION CONTROL UNIT
- ELECTRONIC KEY
- DISTANCE CONTROL
- HEAD-UP DISPLAY
- INJECTION 3/BATTERY ENERGY CONTROL MODULE 2
- PETROL INJECTION
- START/CHARGING CONTROL MODULE
- MULTIFUNCTION MODULE
- SWITCHOVER BOARD
- POWER STEERING
- INFORMATION ELECTRONIC SYSTEM 1
- SUSPENSIONS
- SOUND SYSTEM
- INSTRUMENTATION
- REAR-VIEW CAMERA

A new diagnosis of the "A/C" system has been developed for the models:

- Golf VII
- Tiguan

The diagnosis of the "SWITCHOVER BOARD" system has been updated for the models:

- Arteon
- Atlas
- Golf VII
- Jetta
- Lamando
- Passat B8
- Tiguan
- T-Roc

[Link](#)

[Coverage of Makes](#)

The diagnosis of the "INSTRUMENTATION" system has been updated for the models:

- Amarok
- Golf VIII
- Jetta

The diagnosis of the "LANE CHANGE ASSIST" system has been updated for the models:

- Arteon
- Atlas
- Eos
- Golf VII
- Golf VIII
- Jetta
- Passat B8
- Tiguan
- T-Roc

The diagnosis of the "REAR-VIEW CAMERA" system has been updated for the models:

- Arteon
- Atlas
- Golf VII
- Golf VIII
- Jetta
- Passat B8
- Tiguan
- Touareg

VOLVO

The diagnosis of the "REAR-VIEW CAMERA" system has been updated for the models:

- S60 II
- S80 II
- V40
- V60 I
- V70 III
- XC60 I
- CX70 II

EUROPEAN
MarketNORTH AMERICAN
MarketBRAZILIAN
MarketINDIAN
Market

BRAZILIAN Market

AUDI

A new model has been created and the related diagnosis has been added:

- Q3

New diagnostic systems have been developed for the model A3:

- RIGHT HEADLIGHT CONTROL UNIT
- LEFT HEADLIGHT CONTROL UNIT

The diagnosis of the "LANE CHANGE ASSIST" system has been updated for the model:

- A3

The diagnosis of the "SWITCHOVER BOARD" system has been updated for the model:

- A3

The diagnosis of the "INSTRUMENTATION" system has been updated for the models:

- A1
- Q3

The diagnosis of the "REAR-VIEW CAMERA" system has been updated for the model:

- A3

BMW

New models have been created and the related diagnosis has been added:

- X2
- X3

The diagnosis of the "PETROL INJECTION" system has been updated for the model:

- X4

The diagnosis of the "FLEX FUEL INJECTION" system has been updated for the models:

- 1
- 2
- X1
- X2

The diagnosis of the "360° CAMERA" system has been updated for the models:

- 1
- 3
- X1

[Link](#)[Coverage of Makes](#)

- X2
- X3
- X4

CHERY

A new diagnosis of the "AUTOMATIC TRANSMISSION" system has been developed for the model:

- Tiggo

CHEVROLET

A new diagnosis of the "FLEX FUEL INJECTION" system has been developed for the models:

- Classic
- Corsa

The diagnosis of the "DIESEL INJECTION" system has been updated for the models:

- S 10
- Trailblazer

The diagnosis of the "TYRE PRESSURE" system has been updated for the models:

- Camaro
- Cruze
- Malibu
- Onix
- Prisma
- Spin
- Volt

CITROËN

The diagnosis of the "TYRE PRESSURE" system has been updated for the models:

- C3 Aircross
- C3 Picasso

The diagnosis of the "BODY COMPUTER" system has been updated for the models:

- C3
- C4
- C4 Pallas
- C4 Picasso
- C5

EUROPEAN
MarketNORTH AMERICAN
MarketBRAZILIAN
MarketINDIAN
Market

- C6
- C8
- Xsara Picasso

The diagnosis of the "MULTI-FUNCTION DISPLAY" system has been updated for the following models:

- C3 Picasso
- C8

The diagnosis of the "NAVIGATOR" system has been updated for the models:

- Berlingo
- C3
- C3 Aircross
- C3 Picasso
- C4
- C4 Aircross
- C4 Picasso
- C5
- C8
- DS3
- DS4
- DS5

The diagnosis of the "INSTRUMENTATION" system has been updated for the models:

- C3
- C4 Picasso
- C5
- C8
- Xsara Picasso

The diagnosis of the "TELEMATIC BOARD MODULE" system has been updated for the models:

- C4 Picasso
- C6
- C8

FIAT

A new diagnosis of the "BODY COMPUTER" system has been developed for the models:

- Argo
- Cronos

[Link](#)[Coverage of Makes](#)

- Toro

A new diagnosis of the "A/C" system has been developed for the models:

- Bravo
- Stilo
- Toro

FORD

New diagnostic systems have been developed for the model "Edge":

- AUTOMATIC TRANSMISSION
- INTERIOR REAR LIGHT CONTROL UNIT
- STEERING WHEEL ELECTRONICS
- TYRE PRESSURE
- FOUR-WHEEL DRIVE
- TRUNK

The diagnosis of the "DIESEL INJECTION" system has been updated for the model:

- Ranger

HYUNDAI

New diagnostic systems have been developed for the model "HB20":

- IMMOBILISER
- FRONT CAMERA

The diagnosis of the "TYRE PRESSURE" system has been updated for the model:

- Veloster

KIA

The diagnosis of the "LANE KEEPING ASSIST" system has been updated for the model:

- Sport

The diagnosis of the "TYRE PRESSURE" system has been updated for the model:

- Quoris

The diagnosis of the "PARK ASSIST" system has been updated for the models:

- Picanto
- Sportage

EUROPEAN
MarketNORTH AMERICAN
MarketBRAZILIAN
MarketINDIAN
Market**JAC**

New models have been created and the related diagnosis has been added:

- iEV40
- J6

LEXUS

A new diagnostic system has been developed for the model "LS 460":

- GATEWAY

The diagnosis of the "PETROL INJECTION" system has been updated for the models:

- ES
- LS
- RX

NISSAN

A new diagnosis of the "TYRE PRESSURE" system has been developed for the models:

- Altima
- Frontier
- March
- Setra
- Versa

The diagnosis of the "BODY COMPUTER" system has been updated for the models:

- 350Z
- Altima
- Frontier
- March
- Pathfinder
- Setra
- Versa

The diagnosis of the "TYRE PRESSURE" system has been updated for the models:

- 350Z
- Altima
- Frontier
- March
- Setra

[Link](#)[Coverage of Makes](#)

- Versa

The diagnosis of the "360° CAMERA" system has been updated for the models:

- Altima
- Frontier
- Kicks
- Versa

PEUGEOT

A new model has been created and the related diagnosis has been added:

- Partner

A new diagnosis of the "NAVIGATOR" system has been developed for the models:

- 208
- 408
- RCZ

The diagnosis of the "BODY COMPUTER" system has been updated for the models:

- 206
- 307

The diagnosis of the "MULTI-FUNCTION DISPLAY" system has been updated for the following models:

- 207
- 3008
- 307
- 308
- 407
- 408
- Hoggaz
- RCZ

The diagnosis of the "DISTANCE CONTROL" system has been updated for the model:

- 3008

The diagnosis of the "NAVIGATOR" system has been updated for the models:

- 207
- 3008
- 407
- 508
- Partner

[EUROPEAN
Market](#)[NORTH AMERICAN
Market](#)[BRAZILIAN
Market](#)[INDIAN
Market](#)

- RCZ

The diagnosis of the "TELEMATIC BOARD MODULE" system has been updated for the models:

- 206
- 307
- 308
- 407
- 408
- RCZ

RENAULT

A new diagnosis of the "FRONT CAMERA" system has been developed for the model:

- Captur

The diagnosis of the "NAVIGATOR" system has been updated for the models:

- Captur
- Logan
- Sandero

TOYOTA

The diagnosis of the "PETROL INJECTION" system has been updated for the models:

- Camry
- Corolla
- Hi-Lux
- RAV4

The diagnosis of the "FLEX FUEL INJECTION" system has been updated for the models:

- Etios
- Corolla

The diagnosis of the "DIESEL INJECTION" system has been updated for the model:

- Hi-Lux

TROLLER

The diagnosis of the "DIESEL INJECTION" system has been updated for the model:

- T4

[Link](#)[Coverage of Makes](#)

VOLKSWAGEN

A new model has been created and the related diagnosis has been added:

- Nivus

A new diagnosis of the "A/C" system has been developed for the model:

- Tiguan

A new diagnosis of the "PETROL INJECTION" system has been developed for the model:

- Up!

The diagnosis of the "LANE CHANGE ASSIST" system has been updated for the models:

- Golf
- Jetta
- Passat
- T-Cross
- Tiguan

The diagnosis of the "SWITCHOVER BOARD" system has been updated for the models:

- Amarok
- CrossFox
- Fox
- Gol
- Jetta
- Polo
- Saveiro
- SpaceCross
- SpaceFox
- Voyage

The diagnosis of the "REAR-VIEW CAMERA" system has been updated for the models:

- Jetta
- Tiguan
- Touareg

EUROPEAN
MarketNORTH AMERICAN
MarketBRAZILIAN
MarketINDIAN
Market

INDIAN MARKET

AUDI

New models have been created and the related diagnosis has been added:

- A1 Citycarver [20>]
- A3 Sportback / Sedan [20>]
- A6 [19>]
- E-Tron Sportback [20>]
- RS6 [20>]
- RS7 [20>]
- RSQ8 [19>]
- S8 [19>]
- SQ8 [19>]

New diagnostic systems have been developed for the models A3 Sportback / Sedan [20>]:

- AIRBAG
- BRAKE BOOSTER
- LANE CHANGE ASSIST
- AUTOMATIC TRANSMISSION
- BURGLARY PROTECTION CONTROL UNIT
- ELECTRONIC KEY
- DISTANCE CONTROL
- INJECTION 3/BATTERY ENERGY CONTROL MODULE 2
- START/CHARGING CONTROL MODULE
- SWITCHOVER BOARD
- HEAD-UP DISPLAY
- POWER STEERING
- INFORMATION ELECTRONIC SYSTEM 1
- SUSPENSIONS
- SOUND SYSTEM
- INSTRUMENTATION
- REAR-VIEW CAMERA

A new diagnosis has been developed for the "RIGHT HEADLIGHT CONTROL UNIT" and "LEFT HEADLIGHT CONTROL UNIT" systems for the entire range currently on the market.

[Link](#)[Coverage of Makes](#)

A new diagnosis of the "PETROL INJECTION" system has been developed for the models:

- RS6
- RS7
- RSQ8

The diagnosis of the "HIGH VOLTAGE CONVERTER" system has been updated for the models:

- A6 / S6 / RS6
- A7 / S7 / RS7
- E-Tron / E-Tron Sportback
- Q8 / SQ8 / RSQ8

The diagnosis of the "BATTERY CHARGER CONTROL MODULE" system has been updated for the models:

- A3
- A6
- A7
- Q8 / SQ8 / RSQ8

The diagnosis of the "SWITCHOVER BOARD" system has been updated for the models:

- A1
- Q2
- RSQ3
- A3 / S3 / RS3
- Q3
- RSQ2
- TT

BMW

New models have been created and the related diagnosis has been added:

- 3 [20>]
- 2 [19>]
- 8 [19>]
- X5 [20>]
- X6 [19>]
- X6 M [20>]

The diagnosis of the "PETROL INJECTION" system has been updated for the models:

- Series 1 / 2 / 3 / 5 / 6 / 7 / 8
- i8

[EUROPEAN Market](#)[NORTH AMERICAN Market](#)[BRAZILIAN Market](#)[INDIAN Market](#)

- X1 / X2 / X3 / X4 / X5 / X7
- Z4

The diagnosis of the "BATTERY ADJUSTMENT" system has been updated for the models:

- Series 5 / 7
- X3 / X4 / X5

The diagnosis of the "EV CONTROL SYSTEM" has been updated for the models:

- Series 2 / 3 / 5 / 7
- i8
- X5

The diagnosis of the "360° CAMERA" system has been updated for the models:

- Series 1 / 2 / 3 / 4 / 5 / 7 / 8
- i3 / i8
- X1 / X2 / X3 / X4 / X5 / X6 / X7

CHEVROLET

A new diagnosis of the "ABS" system has been developed for the models:

- Enjoy
- Sail I

A new diagnosis of the "AIRBAG" system has been developed for the models:

- Enjoy
- Sail I

A new diagnosis of the "SUNROOF ECU" system has been developed for the model:

- Camaro

A new diagnosis of the "FRONT CAMERA" system has been developed for the models:

- Suburban
- Tahoe

A new diagnosis of the "PETROL INJECTION" system has been developed for the models:

- Blazer
- Camaro
- Colorado
- Enjoy
- Sail I

A new diagnosis of the "DIESEL INJECTION" system has been developed for the models:

- Colorado

[Link](#)[Coverage of Makes](#)

- Enjoy
- Trailblazer

A new diagnosis of the “INSTRUMENTATION” system has been developed for the models:

- Colorado
- Enjoy
- Trailblazer

The diagnosis of the “TYRE PRESSURE” system has been updated for the models:

- Onix
- Prisma II
- Orlando
- Spin
- Aveo III
- Camaro
- Cruze
- Malibu
- Spark
- Trax
- Volt

FIAT

A new diagnosis of the “A/C” system has been developed for the models:

- Bravo
- Stilo

The diagnosis of the “PETROL INJECTION” system has been updated for the models:

- Panda
- 500
- 500C

The diagnosis of the “LANE KEEPING ASSIST” system has been updated for the model:

- Bravo

FORD

New models have been created and the related diagnosis has been added:

- Kuga III [19>]
- Puma [19>]

[EUROPEAN
Market](#)[NORTH AMERICAN
Market](#)[BRAZILIAN
Market](#)[INDIAN
Market](#)

- Escape IV [19>]
- Explorer VI [19>]

A new diagnosis of the "FOUR-WHEEL DRIVE" system has been developed for the models:

- Edge II
- Escape IV
- Explorer VI
- Kuga III

A new diagnosis of the "ABS" system has been developed for the models:

- Flex
- Taurus V
- Taurus VI

A new diagnosis of the "AIRBAG" system has been developed for the models:

- Contour
- Crown Victoria
- Escape I
- Escort
- Excursion
- Expedition I
- Expedition II
- Explorer II
- Explorer III
- Explorer Sport Trac
- F150
- Five Hundred
- Freestyle
- Maverick
- Mustang IV
- Taurus IV
- Taurus V
- Taurus VI
- Thunderbird XI
- Windstar
- Flex
- Freestar

[Link](#)[Coverage of Makes](#)

A new diagnosis of the "AUTOMATIC TRANSMISSION" system has been developed for the models:

- Edge I
- Expedition III
- Expedition III EL/MAX
- Explorer IV
- Explorer Sport Trac
- Five Hundred
- Flex
- Focus IV
- Freestyle
- Taurus V
- Taurus VI

A new diagnosis of the "A/C" system has been developed for the models:

- Expedition III
- Expedition III EL/MAX

A new diagnosis of the "LEFT / RIGHT SIDE OBSTACLE DETECTION CONTROL UNIT" system has been developed for the models:

- Explorer V
- Taurus VI

A new diagnosis of the "HEADLIGHT ADJUSTMENT" system has been developed for the models:

- Escape III
- Fiesta VII

A new diagnosis of the "PETROL INJECTION" system has been developed for the models:

- Flex
- Focus III
- Focus IV
- Taurus V
- Taurus VI

A new diagnosis of the "TYRE PRESSURE" system has been developed for the models:

- Edge I
- Escape I
- Escape II
- Expedition III
- Expedition III EL/MAX

[EUROPEAN
Market](#)[NORTH AMERICAN
Market](#)[BRAZILIAN
Market](#)[INDIAN
Market](#)

- Explorer IV
- Explorer Sport Trac
- Flex
- Maverick
- Mustang V
- Taurus V
- Taurus VI

The diagnosis of the "DIESEL INJECTION" system has been updated for the model:

- Ranger

A new diagnosis of the "CRUISE CONTROL" system has been developed for the model:

- Edge I

The diagnosis of the "360° CAMERA" system has been updated for the models:

- Edge II
- Expedition IV
- Expedition IV MAX
- Expedition V
- F150

HONDA

New models have been created and the related diagnosis has been added:

- Jazz [20>]
- Fit [20>]
- Insight [19>]
- Passport [19>]

The diagnosis of the "HYBRID SYSTEM" has been updated for the models:

- Accord IX
- Accord X
- Civic IX
- CR-V
- CR-Z
- Fit Shuttle
- Freed
- Freed Spike
- Insight

[Link](#)[Coverage of Makes](#)

- Jazz
- Verzel

HYUNDAI

New models have been created and the related diagnosis has been added:

- Aura [20>]
- Kauai [19>];
- Veloster [19>];

New diagnostic systems have been developed for the model "Aura":

- AUTOMATIC TRANSMISSION
- IMMOBILISER

A new diagnosis of the "PRE-CRASH SYSTEM" has been developed for the model:

- Elantra

A new diagnosis of the "BODY COMPUTER" system has been developed for the model:

- Creta

A new diagnosis of the "BLIND SPOT MODULE" system has been developed for the model:

- Elantra

A new diagnosis of the "AUTOMATIC TRANSMISSION" system has been developed for the models:

- Aura
- Grand i10 Nios
- i10

A new diagnosis of the "FRONT CAMERA" system has been developed for the model:

- i10

A new diagnosis of the "HEADLIGHT ADJUSTMENT" system has been developed for the model:

- Genesis
- Santa Fe
- Sonata VII

A new diagnosis of the "IMMOBILISER" system has been developed for the model:

- Aura
- Grand i10 Nios
- i10
- Santa Fe

A new diagnosis of the "CRUISE CONTROL" system has been developed for the model:

- Sonata VII

[EUROPEAN Market](#)[NORTH AMERICAN Market](#)[BRAZILIAN Market](#)[INDIAN Market](#)

A new diagnosis of the "MULTIFUNCTION CAMERA" system has been developed for the model:

- Elantra

JAGUAR

New diagnostic systems have been developed for the model "I-Pace":

- BRAKE BOOSTER
- BATTERY CHARGER CONTROL MODULE
- HEADLIGHT ADJUSTMENT
- MULTIMEDIA SYSTEM

A new diagnosis of the "PASSENGER SIDE SEAT ADJUSTMENT" system has been developed for the models:

- F-Pace
- I-Pace
- XE
- XF

JEEP

A new model has been created and the related diagnosis has been added:

- Gladiator [19>]

A new diagnosis of the "SERVICE WARNING LIGHT" system has been developed for the models:

- Compass
- Renegade

KIA

New models have been created and the related diagnosis has been added:

- Soul EV [20>]
- Quoris [19>]
- Soluto [19>]

New diagnostic systems have been developed for the model "Ceed":

- IMMOBILISER
- SERVICE WARNING LIGHT

New diagnostic systems have been developed for the model "Optima IV":

- SEAT ADJUSTMENT, DRIVER'S SIDE
- PRE-CRASH SYSTEM

New diagnostic systems have been developed for the model "Soul EV":

[Link](#)[Coverage of Makes](#)

- ACTIVE AIR FLAP
- ELECTRIC MOTOR CONTROL UNIT
- A/C
- IMMOBILISER
- PETROL INJECTION
- GEAR SELECTOR LEVER
- BATTERY CONTROL MODULE
- HIGH-VOLTAGE BATTERY CHARGE MANAGEMENT

The diagnosis of the "PARK ASSIST" system has been updated for the models:

- Borrego
- Cadenza
- Carnival III
- Ceed
- K9/K900
- Mohave
- Morning
- Niro
- Optima IV
- Picanto
- ProCeed
- Quoris
- Rio
- Sedona III
- Sportage
- Stinger
- Stonic
- XCeed

The diagnosis of the "MULTIFUNCTION CAMERA" system has been updated for the models:

- Carens IV
- Carnival III
- Stonic
- Optima IV
- Rio
- Rondo

[EUROPEAN
Market](#)[NORTH AMERICAN
Market](#)[BRAZILIAN
Market](#)[INDIAN
Market](#)

- Sedona
- Sportage

The diagnosis of the "REAR-VIEW CAMERA" system has been updated for the models:

- Mohave
- Borrego
- Cadenza
- Niro
- Soul
- Sportage

LAND ROVER

For the new models:

- Defender 90 / 110
- Discovery Sport
- Range Rover Evoque
- Range Rover Velar

New diagnostic systems have been developed:

- BATTERY CHARGING MODULE
- MULTIMEDIA SYSTEM
- HEADLIGHT ADJUSTMENT
- MULTI-FUNCTION DISPLAY
- PASSENGER SIDE SEAT ADJUSTMENT

And many other systems have been updated, such as:

- TRAILER ECU
- A/C
- GATEWAY
- GEAR SELECTOR LEVER
- DRIVER SIDE DOOR
- PASSENGER SIDE DOOR
- DRIVER SIDE REAR DOOR
- PASSENGER SIDE REAR DOOR
- CRUISE CONTROL
- POWER STEERING
- AUDIO AMPLIFIER SYSTEM

[Link](#)[Coverage of Makes](#)

- KEYLESS GO SYSTEM
- MULTIMEDIA SYSTEM

LEXUS

A new model has been created and the related diagnosis has been added:

- LM [19>]

A new diagnosis of the "ABS" system has been developed for the model series:

- ES
- LS
- NX
- RC
- RX
- UX

New diagnostic systems have been developed for the UX models:

- ABS
- HEAD-UP DISPLAY
- REAR ELECTRIC MOTOR
- POWER STEERING
- START&STOP
- TELEMATIC CONTROL UNIT

New diagnostic systems have been developed for the ES models:

- ABS
- ENGINE SOUND ACTUATOR
- HEAD-UP DISPLAY
- SAFETY PEDESTRIAN IMPACT
- DIGITAL EXTERIOR MIRRORS
- START&STOP

New diagnostic systems have been developed for the LS models:

- ABS
- ENGINE SOUND ACTUATOR
- BODY COMPUTER (FRONT JUNCTION BOX ELECTRONICS)
- BODY COMPUTER (REAR JUNCTION BOX ELECTRONICS)
- SEAT BELT COMMAND CONTROL UNIT
- HEAD-UP DISPLAY

EUROPEAN
MarketNORTH AMERICAN
MarketBRAZILIAN
MarketINDIAN
Market

- SECOND BATTERY CONTROL MODULE
- FRONT CORNER RADAR 1
- FRONT CORNER RADAR 2
- SAFETY PEDESTRIAN IMPACT
- COMFORT SYSTEM
- SUSPENSIONS
- START&STOP

MAHINDRA

A new diagnosis of the "ABS" system has been developed for the models:

- KUV100
- Marazzo
- NuvoSport N8
- Scorpio II
- Scorpio III
- TUV300
- Xylo

A new diagnosis of the "AIRBAG" system has been developed for the models:

- KUV100
- Marazzo
- NuvoSport N8
- Scorpio III
- TUV300

A new diagnosis of the "BODY COMPUTER" system has been developed for the models:

- KUV100
- Marazzo
- NuvoSport N8
- Scorpio II
- Scorpio III
- TUV300
- XUV500

A new diagnosis of the "AUTOMATIC TRANSMISSION" system has been developed for the models:

- NuvoSport N8
- Scorpio III

[Link](#)[Coverage of Makes](#)

- TUV300

A new diagnosis of the "A/C" system has been developed for the models:

- Marazzo
- Scorpio III

A new diagnosis of the "INFOTAINMENT INTERFACE" system has been developed for the models:

- KUV100
- Marazzo
- Scorpio III
- TUV300

A new diagnosis of the "IMMOBILISER" system has been developed for the models:

- Bolero
- KUV100
- NuvoSport N8
- Quanto
- Scorpio III
- Thar

A new diagnosis of the "DIESEL INJECTION" system has been developed for the models:

- KUV100
- NuvoSport N8
- Scorpio II
- Scorpio III
- Thar
- TUV300
- Xylo

A new diagnosis of the "PETROL/LPG INJECTION" system has been developed for the model:

- KUV100

A new diagnosis of the "PARK ASSIST" system has been developed for the models:

- KUV100
- Scorpio III
- TUV300

A new diagnosis of the "POWER STEERING" system has been developed for the models:

- KUV100
- Marazzo

A new diagnosis of the "INSTRUMENTATION" system has been developed for the models:

[EUROPEAN Market](#)[NORTH AMERICAN Market](#)[BRAZILIAN Market](#)[INDIAN Market](#)

- Bolero
- KUV100
- NuvoSport N8
- Marazzo
- Scorpio III
- TUV300

MAZDA

New diagnostic systems have been developed for the model CX-30 [19>]:

- ABS
- AIRBAG
- PARK ASSIST
- BODY COMPUTER
- BODY COMPUTER (JUNCTION BOX ELECTRONICS)
- VEHICLE CONNECTION CONTROL UNIT
- RIGHT HEADLIGHT CONTROL UNIT
- LEFT HEADLIGHT CONTROL UNIT
- ELECTRONIC KEY
- A/C
- DC/DC CONVERTER
- BATTERY CHARGER CONTROL MODULE
- INTEGRATED STARTER GENERATOR
- DRIVER SIDE DOOR
- PASSENGER SIDE DOOR
- RADAR
- HEADLIGHT ADJUSTMENT
- FRONT RIGHT SHORT-RANGE SIDE RADAR SENSOR
- FRONT LEFT SHORT-RANGE SIDE RADAR SENSOR
- REAR RIGHT SHORT-RANGE SIDE RADAR SENSOR
- REAR LEFT SHORT-RANGE SIDE RADAR SENSOR
- POWER STEERING
- DRIVER STATUS MONITORING SYSTEM
- INSTRUMENTATION
- ADDITIONAL INSTRUMENTATION

[Link](#)[Coverage of Makes](#)

- 360° CAMERA
- FRONT CAMERA
- AUXILIARY CONTROL UNIT
- TELEMATIC CONTROL UNIT
- TRUNK

New diagnostic systems have been developed for the model Mazda3 [19>]:

- ABS
- AIRBAG
- PARK ASSIST
- BODY COMPUTER
- BODY COMPUTER (JUNCTION BOX ELECTRONICS)
- VEHICLE CONNECTION CONTROL UNIT
- RIGHT HEADLIGHT CONTROL UNIT
- LEFT HEADLIGHT CONTROL UNIT
- ELECTRONIC KEY
- A/C
- DC/DC CONVERTER
- BATTERY CHARGER CONTROL MODULE
- INTEGRATED STARTER GENERATOR
- DRIVER SIDE DOOR
- PASSENGER SIDE DOOR
- RADAR
- HEADLIGHT ADJUSTMENT
- FRONT RIGHT SHORT-RANGE SIDE RADAR SENSOR
- FRONT LEFT SHORT-RANGE SIDE RADAR SENSOR
- REAR RIGHT SHORT-RANGE SIDE RADAR SENSOR
- REAR LEFT SHORT-RANGE SIDE RADAR SENSOR
- POWER STEERING
- DRIVER STATUS MONITORING SYSTEM
- INSTRUMENTATION
- ADDITIONAL INSTRUMENTATION
- 360° CAMERA
- AUXILIARY CONTROL UNIT
- TELEMATIC CONTROL UNIT

[EUROPEAN
Market](#)[NORTH AMERICAN
Market](#)[BRAZILIAN
Market](#)[INDIAN
Market](#)

The diagnosis of the "PARKING BRAKE" system has been updated for the models:

- CX-3
- CX-4
- CX-5
- CX-8
- CX-9
- Mazda3
- Mazda6

The diagnosis of the "DIESEL INJECTION" system has been updated for the model:

- BT-50

MERCEDES-BENZ

A new model has been created and the related diagnosis has been added:

- GLA [20>]

A new diagnosis of the "FOUR-WHEEL DRIVE" system has been developed for the models:

- Class A / B
- CLA
- GLA
- GLB

A new diagnosis of the "ABS" system has been developed for the models:

- Class C / E / G
- GLC
- AMG GT

A new diagnosis of the "ANTI-THEFT" system has been developed for the models:

- Class A / B
- CLA
- GLA
- GLB
- GLE
- GLS

A new diagnosis of the "AUTOMATIC TRANSMISSION" system has been developed for the models:

- Class A / B / C / E / G / S
- CLA
- CLS

[Link](#)[Coverage of Makes](#)

- GLA
- GLB
- GLC
- GLE
- GLS
- AMG GT
- Citan

A new diagnosis of the "A/C" system has been developed for the models:

- Class V
- GLE
- GLS
- Metris
- Vito

A new diagnosis of the "TRANSFER CASE UNIT" system has been developed for the models:

- Class G
- GLE
- GLS

A new diagnosis of the "PETROL INJECTION" system has been developed for the models:

- Class A / B / C / E / S
- CLA
- CLS
- GLA
- GLB
- GLE
- GLS

A new diagnosis of the "DIESEL INJECTION" system has been developed for the models:

- Class B
- CLA
- GLA

A new diagnosis of the "SUSPENSIONS" system has been developed for the models:

- Class A / B
- CLA
- GLA
- GLB

[EUROPEAN
Market](#)[NORTH AMERICAN
Market](#)[BRAZILIAN
Market](#)[INDIAN
Market](#)

A new diagnosis of the "SOUND SYSTEM" has been developed for the models:

- Class A / B / E
- EQC
- CLA
- GLA
- GLB
- GLC
- GLE
- GLS

A new diagnosis of the "ELECTRIC TOP" system has been developed for the models:

- Class B
- GLA
- GLB
- GLE
- GLS

A new diagnosis of the "REAR-VIEW CAMERA" system has been developed for the models:

- Class A / B / C / E / S / V
- EQC
- CLA
- CLS
- GLA
- GLB
- GLC
- GLE
- GLS
- METRIS
- VITO

MINI

A new model has been created and the related diagnosis has been added:

- Cooper S EV [20>]

The diagnosis of the "EV CONTROL SYSTEM" has been updated for the model:

- Mini Countryman

The diagnosis of the "PETROL INJECTION" system has been updated for the models:

[Link](#)[Coverage of Makes](#)

- Mini Clubman
- Mini Cooper
- Mini Cabrio
- Mini Countryman

MITSUBISHI

New diagnostic systems have been developed for the model Delica D:5 [19>]:

- DRIVER'S DOOR WINDOW LIFT
- PASSENGER'S DOOR WINDOW LIFT
- REAR RIGHT DOOR WINDOW LIFT
- REAR LEFT DOOR WINDOW LIFT
- AUTOMATIC TRANSMISSION
- DIESEL INJECTION
- RH SLIDING DOOR
- LH SLIDING DOOR
- REDUCING AGENT METERING SYSTEM
- TRUNK

The diagnosis of the "ACCESSORY GATEWAY" system has been updated for the model:

- Eclipse Cross

The diagnosis of the "BLIND SPOT MODULE" system has been updated for the models:

- L 200
- Montero Sport
- Pajero Sport
- Strada
- Triton

The diagnosis of the "DIESEL INJECTION" system has been updated for the models:

- Delica D:5
- Eclipse Cross

The diagnosis of the "MULTIFUNCTION CAMERA" system has been updated for the models:

- Attrage
- L 200
- Mirage
- Mirage G4
- Space Star

[EUROPEAN Market](#)[NORTH AMERICAN Market](#)[BRAZILIAN Market](#)[INDIAN Market](#)

- Strada
- Triton

NISSAN

A new diagnosis of the "ABS" system has been developed for the models:

- Armada
- Patrol GR
- Titan

A new diagnosis of the "BODY COMPUTER" system has been developed for the models:

- Altima
- Armada
- Cube
- Frontier
- Maxima
- Murano
- NP300
- Pathfinder
- Titan

A new diagnosis of the "POWER MODULE" system has been developed for the models:

- Altima
- Armada
- Navara
- Pathfinder
- Patrol GR
- Sentra
- Titan
- Versa

A new diagnosis of the "TYRE PRESSURE" system has been developed for the models:

- 370Z
- Altima
- Armada
- Cube
- Frontier
- Juke

[Link](#)[Coverage of Makes](#)

- Leaf
- March
- Maxima
- Micra
- Murano
- Navara
- Note
- NP300
- Pathfinder
- Rogue
- Sentra
- Sunny
- Teana
- Titan
- Versa

OPEL

A new model has been created and the related diagnosis has been added:

- Zafira-Life [19>]

The diagnosis of the following systems has been updated for the model Corsa-F:

- KEYLESS GO SYSTEM
- BATTERY CONTROL MODULE
- ELECTRONIC CLIMATE CONTROL COMPRESSOR
- ELECTRIC MOTOR CONTROL UNIT
- APPROACHING VEHICLE SOUND FOR PEDESTRIANS

The diagnosis of the "TYRE PRESSURE" system has been updated for the models:

- Ampera
- Ampera EV
- Astra-J
- Astra-K
- Cascada
- Insignia-A
- Insignia-B
- Karl

[EUROPEAN
Market](#)[NORTH AMERICAN
Market](#)[BRAZILIAN
Market](#)[INDIAN
Market](#)

- Mokka
- Mokka X
- Zafira-C

RENAULT

New models have been created and the related diagnosis has been added:

- Twingo III ZE [20>]
- City K-ZE [19>]
- Triber [20>]

New diagnostic systems have been developed for the model Captur II:

- ELECTRIC MOTOR CONTROL UNIT
- DC/DC CONVERTER
- BATTERY CONTROL MODULE
- ELECTRIC DRIVE
- RIGHT BLIND SPOT MODULE
- LEFT BLIND SPOT MODULE
- INTEGRATED STARTER GENERATOR

New diagnostic systems have been developed for the model City K-ZE:

- AIRBAG
- BODY COMPUTER
- EV CONTROL SYSTEM
- BATTERY CONTROL MODULE

The diagnosis of the "NAVIGATOR" system has been updated for the models:

- Captur I / II
- Kaptur
- Clio V
- Twingo III
- Zoe II

The diagnosis of the "DIESEL INJECTION" system has been updated for the models:

- Grand Scenic IV
- Kadjar
- Koleos II
- Megane IV
- Scenic IV

[Link](#)[Coverage of Makes](#)

- Talisman

SKODA

New models have been created and the related diagnosis has been added:

- Octavia [20>]
- Octavia Kombi [20>]

New diagnostic systems have been developed for the models Octavia / Kombi [20>]:

- AIRBAG
- BRAKE BOOSTER
- LANE CHANGE ASSIST
- AUTOMATIC TRANSMISSION
- BURGLARY PROTECTION CONTROL UNIT
- ELECTRONIC KEY
- DISTANCE CONTROL
- INJECTION 3/BATTERY ENERGY CONTROL MODULE 2
- PETROL INJECTION
- START/CHARGING CONTROL MODULE
- MULTIFUNCTION MODULE
- SWITCHOVER BOARD
- POWER STEERING
- INFORMATION ELECTRONIC SYSTEM 1
- SUSPENSIONS
- SOUND SYSTEM
- INSTRUMENTATION
- REAR-VIEW CAMERA

The diagnosis of the "LANE CHANGE ASSIST" system has been updated for the models:

- Kamiq
- Karoq
- Kodiaq
- Scala

The diagnosis of the "PETROL INJECTION" system has been updated for the models:

- Karoq
- Kodiaq

The diagnosis of the "SWITCHOVER BOARD" system has been updated for the models:

- Karoq

[EUROPEAN
Market](#)[NORTH AMERICAN
Market](#)[BRAZILIAN
Market](#)[INDIAN
Market](#)

- Kodiaq

The diagnosis of the "REAR-VIEW CAMERA" system has been updated for the models:

- Karoq
- Kodiaq

SSANGYONG

New models have been created and the related diagnosis has been added:

- Korando [19>]
- Tivoli [19>]
- XLV [19>]

New diagnostic systems have been developed for the model Korando [19>]:

- ABS
- AIRBAG
- BODY COMPUTER
- AUTOMATIC TRANSMISSION
- WIRELESS PHONE BATTERY CHARGER
- RESCUE CALL
- ELECTRONIC KEY
- A/C
- GATEWAY
- PETROL INJECTION
- DIESEL INJECTION
- BLIND SPOT MODULE
- TYRE PRESSURE
- TRANSFER CASE
- PRE-CRASH SYSTEM
- REDUCING AGENT METERING SYSTEM
- MULTIFUNCTION CAMERA
- TRUNK

New diagnostic systems have been developed for the model Tivoli [19>]:

- ABS
- AIRBAG
- BODY COMPUTER
- AUTOMATIC TRANSMISSION

[Link](#)[Coverage of Makes](#)

- WIRELESS PHONE BATTERY CHARGER
- RESCUE CALL
- ELECTRONIC KEY
- GATEWAY
- PETROL INJECTION
- DIESEL INJECTION
- BLIND SPOT MODULE
- TYRE PRESSURE
- TRANSFER CASE
- REDUCING AGENT METERING SYSTEM
- MULTIFUNCTION CAMERA

New diagnostic systems have been developed for the model XLV [19>]:

- ABS
- AIRBAG
- BODY COMPUTER
- AUTOMATIC TRANSMISSION
- WIRELESS PHONE BATTERY CHARGER
- RESCUE CALL
- ELECTRONIC KEY
- GATEWAY
- PETROL INJECTION
- DIESEL INJECTION
- BLIND SPOT MODULE
- TYRE PRESSURE
- TRANSFER CASE
- REDUCING AGENT METERING SYSTEM
- MULTIFUNCTION CAMERA

SUZUKI

The diagnosis of the "BLIND SPOT MODULE" system has been updated for the models:

- Vitara
- Swift

The diagnosis of the following systems has been updated for the models SX4 S-Cross [16>] and Vitara [16>]:

- DC/DC CONVERTER

EUROPEAN
MarketNORTH AMERICAN
MarketBRAZILIAN
MarketINDIAN
Market

- PETROL INJECTION
- INTEGRATED STARTER GENERATOR
- HYBRID BATTERY SYSTEM

TATA

New models have been created and the related diagnosis has been added:

- Safari Storme [12>]
- Tiago [16>]
- Tigor [17>]

A new diagnosis of the "DIESEL INJECTION" system has been developed for the models:

- Indica
- Safari
- Safari Storme
- Tiago
- Tigor

TOYOTA

New models have been created and the related diagnosis has been added:

- RAV4 Plug-in/ Prime Plug-in [20>]
- Yaris / GR [20>]
- Harrier [20>]
- Ayga [12>]
- Allion [07>]
- Avanza [11>]
- Comfort [18>]
- Corolla [19>]
- Crown Comfort [08>17]
- Harrier [20>]
- Innova [15>]
- Izoa [18>]
- Kijang Innova [15>]
- Levin [19>]
- Wigo [12>]

New diagnostic systems have been developed for the model Yaris [20>]:

[Link](#)[Coverage of Makes](#)

- ABS
- ACCESSORY GATEWAY
- APPROACHING VEHICLE SOUND FOR PEDESTRIANS
- BODY COMPUTER
- BODY COMPUTER (FRONT JUNCTION BOX ELECTRONICS)
- BODY COMPUTER (JUNCTION BOX ELECTRONICS)
- BODY COMPUTER (HEATER)
- A/C
- HEAD-UP DISPLAY
- BLIND SPOT MODULE
- POWER SOURCE CONTROL
- TYRE PRESSURE
- STEERING ANGLE SENSOR
- BRAKING SYSTEM
- START&STOP
- TELEMATIC CONTROL UNIT

A new diagnosis of the "FOUR-WHEEL DRIVE" system has been developed for the models:

- Highlander
- Kluger
- RAV4

A new diagnosis of the "ABS" system has been developed for the models:

- 4-Runner
- Auris
- Corolla
- Fortuner
- Harrier
- Highlander
- Hi-Lux
- Innova
- Kijang Innova
- Kluger
- Levin
- RAV4

A new diagnosis of the "ACCESSORY GATEWAY" system has been developed for the models:

[EUROPEAN
Market](#)[NORTH AMERICAN
Market](#)[BRAZILIAN
Market](#)[INDIAN
Market](#)

- C-HR
- Corolla
- Highlander
- Kluger

A new diagnosis of the "AIRBAG" system has been developed for the models:

- Pixis Epoch
- Pixis Joy
- Pixis Mega
- Pixis Space

A new diagnosis of the "BRAKING SYSTEM" has been developed for the model:

- Highlander

A new diagnosis of the "HEAD-UP DISPLAY" system has been developed for the models:

- Auris
- Avalon
- Camry
- Corolla
- Harrier
- Highlander
- Kluger
- Levin
- RAV4

A new diagnosis of the "START&STOP" system has been developed for the models:

- Alphard
- Avalon
- Camry
- C-HR
- Corolla
- Highlander
- Kluger
- Land Cruiser
- Levin
- Pixis
- RAV4
- Vellfire

[Link](#)[Coverage of Makes](#)

A new diagnosis of the "POWER STEERING" system has been developed for the models:

- Corolla
- Hi-Lux
- Levin
- RAV4
- Pixis Epoch
- Pixis Joy
- Pixis Mega
- Pixis Space

A new diagnosis of the "TELEMATIC CONTROL UNIT" system has been developed for the models:

- 4-Runner
- Auris
- Camry
- C-HR
- Corolla
- Highlander
- Levin
- RAV4

VOLKSWAGEN

New models have been created and the related diagnosis has been added:

- ID.3 [20>]
- T-Roc [20>] Cabriolet

New diagnostic systems have been developed for the model Golf VIII [20>]:

- AIRBAG
- BRAKE BOOSTER
- LANE CHANGE ASSIST
- AUTOMATIC TRANSMISSION
- BURGLARY PROTECTION CONTROL UNIT
- ELECTRONIC KEY
- DISTANCE CONTROL
- HEAD-UP DISPLAY
- INJECTION 3/BATTERY ENERGY CONTROL MODULE 2
- PETROL INJECTION

[EUROPEAN
Market](#)[NORTH AMERICAN
Market](#)[BRAZILIAN
Market](#)[INDIAN
Market](#)

- START/CHARGING CONTROL MODULE
- MULTIFUNCTION MODULE
- SWITCHOVER BOARD
- POWER STEERING
- INFORMATION ELECTRONIC SYSTEM 1
- SUSPENSIONS
- SOUND SYSTEM
- INSTRUMENTATION
- REAR-VIEW CAMERA

New diagnostic systems have been developed for the model ID.3 [20>]:

- AIRBAG
- LANE CHANGE ASSIST
- BURGLARY PROTECTION CONTROL UNIT
- ELECTRONIC KEY
- POWER STEERING
- SUSPENSIONS
- SOUND SYSTEM

A new diagnosis of the "A/C" system has been developed for the models:

- Golf VII
- Tiguan
- Touran

The diagnosis of the "SWITCHOVER BOARD" system has been updated for the models:

- Arteon
- Atlas
- Golf VII
- Jetta
- Lamando
- Passat B8
- Polo
- T-Cross
- Teramont
- Tiguan
- Touran
- T-Roc

[Link](#)[Coverage of Makes](#)

The diagnosis of the "INSTRUMENTATION" system has been updated for the models:

- Ameo
- Polo
- Vento
- Amarok
- Golf VIII
- Jetta

The diagnosis of the "LANE CHANGE ASSIST" system has been updated for the models:

- Arteon
- Atlas
- Bora
- Eos
- Golf VII
- Golf VIII
- Jetta
- Lamando
- Passat B8
- Polo
- T-Cross
- Teramont
- Tiguan
- Touran
- T-Roc

The diagnosis of the "REAR-VIEW CAMERA" system has been updated for the models:

- Arteon
- Atlas
- Golf VII
- Golf VIII
- Jetta
- Passat B8
- Teramont
- Tiguan
- Touareg
- Touran

Link

To check out the extensive coverage of TEXA products, go to:

www.texa.com/coverage



To check on IDC5 compatibility and minimum system requirements, go to:

www.texa.com/system



[Link](#)

[Coverage of Makes](#)

Coverage of Makes

CAR

ABARTH
 ACURA
 ALFA ROMEO
 ASTON MARTIN
AUDI
 AUTOBIANCHI
BMW
BRILLIANCE
BUICK
 BYD
 CADILLAC
 CHANGAN
CHERY
CHEVROLET
CHRYSLER
CITROEN
 CUPRA
 DACIA
 DAEWOO
 DAIHATSU
DODGE
DR
DS
 EFFA
 FAW
FIAT
FORD
GAZ
GEELY
GENESIS
 GMC
 GONOW
GREAT WALL
 HAFEI
 HOLDEN
HONDA
 HUMMER
HYUNDAI
 IKCO
INFINITI
 INNOCENTI

ISUZU
JAC MOTORS
JAGUAR
JEEP
JINBEI
 KATAY
KIA
LADA
LANCIA
LAND ROVER
LEXUS
 LIFAN
LINCOLN
 LOTUS
MAHINDRA
 MARUTI
 MAYBACH
 MAZDA
MERCEDES-BENZ
MERCURY FORD
 MG
 MINI
MITSUBISHI
NISSAN
OPEL
 PERODUA
PEUGEOT
 PLYMOUTH
PROTON
 RAVON
RENAULT
 RENAULT SAMSUNG
 ROVER
 SAAB
 SATURN
SCION
SEAT
SKODA
 SMART
SPERANZA
SSANGYONG
SUBARU

SUZUKI
 TATA
TOYOTA
 TROLLER
 UAZ
 VAZ
VOLKSWAGEN
VOLVO
 WULING

SUPERCAR

ALFA ROMEO
 ASTON MARTIN
BENTLEY
BUGATTI
 CHEVROLET
 DODGE
FERRARI
 FORD
LAMBORGHINI
 MASERATI
 McLAREN
 MORGAN
 PAGANI
PORSCHE
 ROLLS-ROYCE

LIGHT COMMERCIAL VEHICLES

AGRALE
 CHEVROLET
CITROEN
 DACIA
 DAIHATSU
 DFSK
 DODGE
FIAT
FORD
 GAZ

LEGEND



- Brands that **offer** updates in this version
- Brands that do **not offer** updates in this version

GMC
 GREAT WALL
 HAFEI
 HYUNDAI
ISUZU
 IVECO
 IVECO (LATAM)
 KIA
 LAND ROVER
 LDV
 MAHINDRA
 MAN
 MAZDA
MERCEDES-BENZ
MERCEDES-BENZ
(LATAM / ASIA PACIFIC)
 MITSUBISHI
NISSAN
OPEL
PEUGEOT
 PIAGGIO
 RENAULT
 SKODA
 SOLLERS FIAT
 SSANGYONG
 SUZUKI
 TATA
TOYOTA
 VICTORIA GIOTTI
 VOLKSWAGEN

LPG/CNG

BIGAS
 BRC
 EMER
 LANDI RENZO
 LOVATO
 OMVL
 ROMANO AUTOGAS
 TARTARINI
 ZAVOLI

LEGEND

-  Brands that **offer** updates in this version
-  Brands that do **not offer** updates in this version

[Link](#)

[Coverage of Makes](#)

WARNING

The trademarks and logos of vehicle manufacturers in this document have been used exclusively for information purposes and are used to clarify the compatibility of TEXA products with the models of vehicles identified by the trademarks and logos. Because TEXA products and software are subject to continuous developments and updates, upon reading this document they may not be able to carry out the DIAGNOSTICS of all the models and electronic systems of each vehicle manufacturer mentioned within this document. References to the makes, models and electronic systems within this document must therefore be considered purely indicative and TEXA recommends to always check the list of the "Systems that can be diagnosed" of the product and/or software at TEXA authorized retailers before any purchase. **The images and the vehicle outlines within this document have been included for the sole purpose of making it easier to identify the vehicle category (car, truck, motorbike, etc.) for which the TEXA product and/or software is intended.** The data, descriptions and illustrations may change compared to those described in this document. TEXA S.p.A. reserves the right to make changes to its products without prior notice.



Copyright TEXA S.p.A.

11/2020 - Inglese



TEXA S.p.A.
Via 1 Maggio, 9
31050 Monastier di Treviso
Treviso - ITALY
Tel. +39 0422 791311
Fax +39 0422 791300
www.texa.com - info.it@texa.com

**COMPANY WITH
QUALITY SYSTEM
CERTIFIED BY DNV GL
= ISO 9001 =**