



IDC5
SOFTWARE
UPDATE

TRUCK 52.0.0



IDC5 TRUCK 52.0.0

the new diagnostic features included in the **IDC5 TRUCK 52.0.0** update, which also contains the continuous updates **51.0.1 / 51.0.2 / 51.0.3 / 51.1.0 / 51.1.1 / 51.1.2 / 51.2.0 / 51.2.1 / 51.3.0 / 51.3.1 / 51.3.2 / 51.3.3 / 51.3.4 / 51.3.5 / 51.3.6**, allow working on a large number of vehicles that belong to makes of the most popular manufacturers. The work TEXA's developers carried out on industrial vehicles, light commercial vehicles and buses guarantees all mechanics the opportunity to use diagnostic tools that are always updated and state-of-the-art, to operate successfully on the vast majority of the vehicles on the road.

Moreover, the **ENGLISH - AMERICAN** language has been added.

The **TRUCK 52.0.0** update also offers new, very useful Wiring Diagrams and DASHBOARDS.

To learn more about the extraordinary coverage made available by TEXA, visit the website:
www.texa.com/coverage

IDC5 TRUCK 52.0.0 contains new possible selections for the major makes worldwide, among which:

AGRALE, AKIA, ALLISON, ASTRA, BENDIX-KNORR, BMC, BONETTI, BOSCH SCR, BREDAMENARINI, CATERPILLAR, CHEVROLET, CITROEN, CREDO, CUMMINS, DAF, DAF (LATAM), DENNIS EAGLE, DETROIT, DODGE, FAST, FIAT PROFESSIONAL, FORD, FPT, FREIGHTLINER, FRESIA, GMC, GREAT WALL, HINO, INTERNATIONAL, IRIZAR, ISUZU, ISUZU (North America), IVECO, IVECO (LATAM), IVECO BUS, KAMAZ, KÄRCHER, KARSAN, KENWORTH, KNORR-BREMSE, MACK, MAN, MASCARELLO, MATHIEU, MERCEDES-BENZ, MITSUBISHI FUSO, MULTICAR, MWM, NEOBUS, NISSAN, OPEL, OPTARE, OTOKAR, PACCAR, PETERBILT, PEUGEOT, REFORM, RENAULT, RENAULT TRUCK, RENAULT TRUCK (LATAM), SCANIA, SCANIA (LATAM), SCANIA, SINOTRUK, SPARTAN, TATA DAEWOO, TEKNE, TEMSA, TOYOTA, UD TRUCK, VOITH, VOLKSWAGEN, VOLKSWAGEN TRUCK, VOLVO BUS, VOLVO TRUCK, VOLVO TRUCK (LATAM), WABCO, WESTERN STAR, YUCHAI, YUTONG, ZF.

Software

Generic vehicle search

System search bar

“Most used” sub-family

PRINT button for adjustment and activation DASHBOARDS

Help section for the DASHBOARD parameters

Error description display in theTGS3s DASHBOARDS

Fault notification ticket without Internet connection

TecRMI menu modifications

Automatic Troubleshooting translation

Diagnosis

WORLDWIDE Market

TRUCK

BUS & COACH

LIGHT COMMERCIAL VEHICLES

TRAILERS/SEMI-TRAILERS

SMALL UTILITY TRUCKS

NORTH AMERICAN Market

TRUCK

BUS & COACH

LIGHT COMMERCIAL VEHICLES

Wiring diagrams

Dashboard

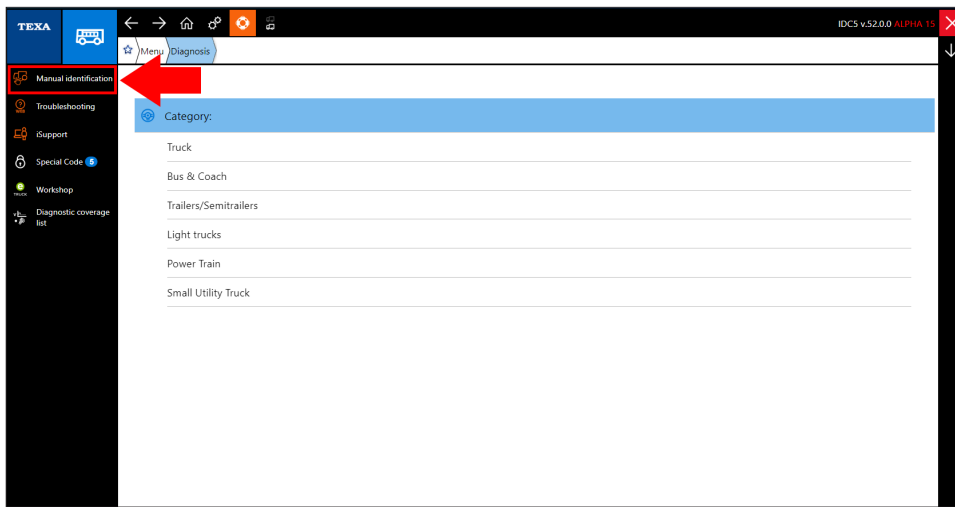
TecRMI technical data

Coverage

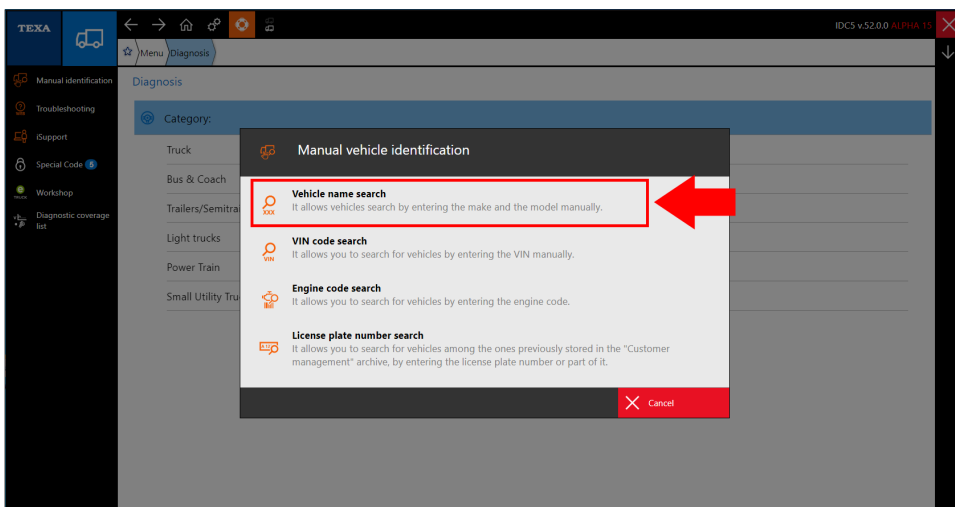
New software features

Generic vehicle search

Starting from the TRUCK 52 version, a new function has been implemented in the "Manual identification" menu: it is now possible to find a vehicle using the search bar.



Manual identification menu.



Vehicle name search.



Software

Generic vehicle search

System search bar

"Most used" sub-family

PRINT button for adjustment and activation DASHBOARDS

Help section for the DASHBOARD parameters

Error description display in theTGS3s DASHBOARDS

Fault notification ticket without Internet connection

TecRMI menu modifications

Automatic Troubleshooting translation

Diagnosis

WORLDWIDE Market

TRUCK

BUS & COACH

LIGHT COMMERCIAL VEHICLES

TRAILERS/SEMI-TRAILERS

SMALL UTILITY TRUCKS

NORTH AMERICAN Market

TRUCK

BUS & COACH

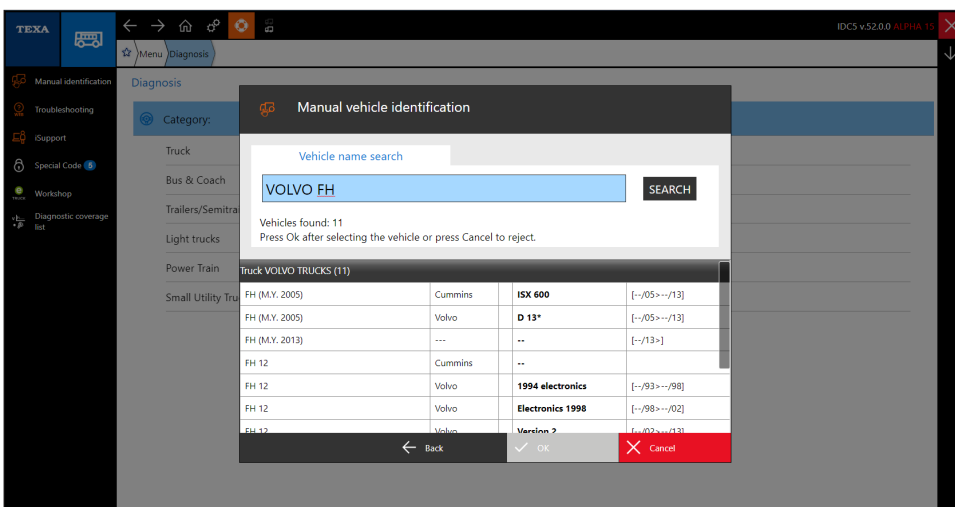
LIGHT COMMERCIAL VEHICLES

Wiring diagrams

Dashboard

TecRMI technical data

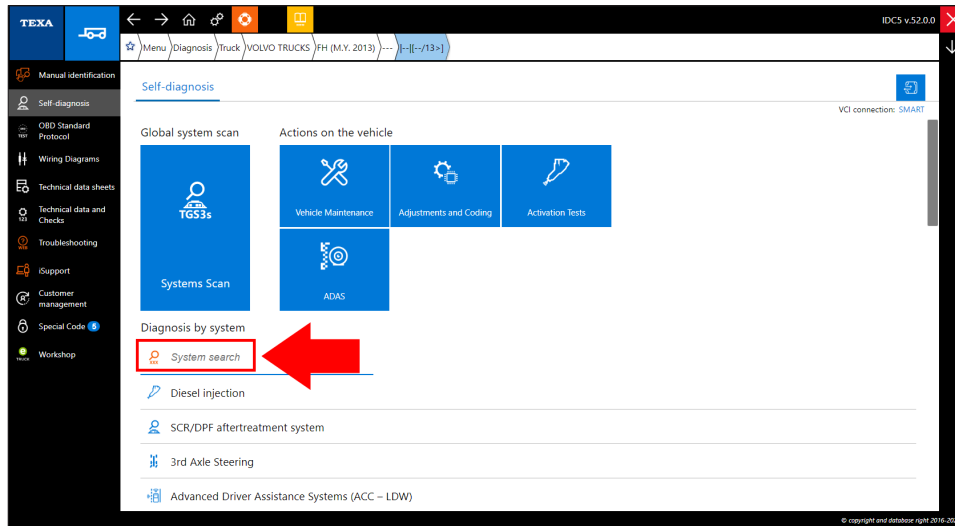
Coverage



Search bar.

System search bar

Starting from the TRUCK 52 version, a new function has been implemented in the "Self-Diagnosis" menu: it is now possible to find a specific system using the search bar.

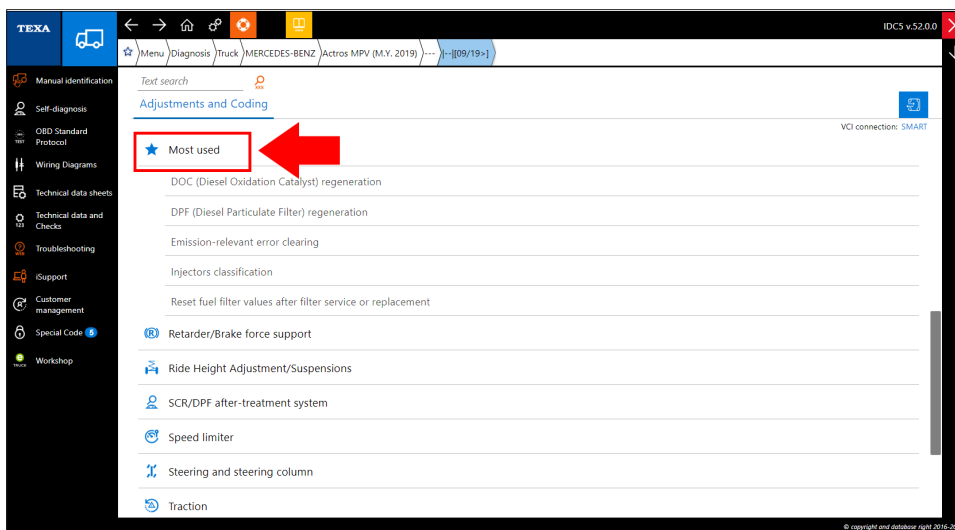


Search bar.

"Most used" sub-family

Starting from the TRUCK 52 version, a new sub-family, called "Most used", has been implemented in the "Adjustments and coding" and "Device check" menus.

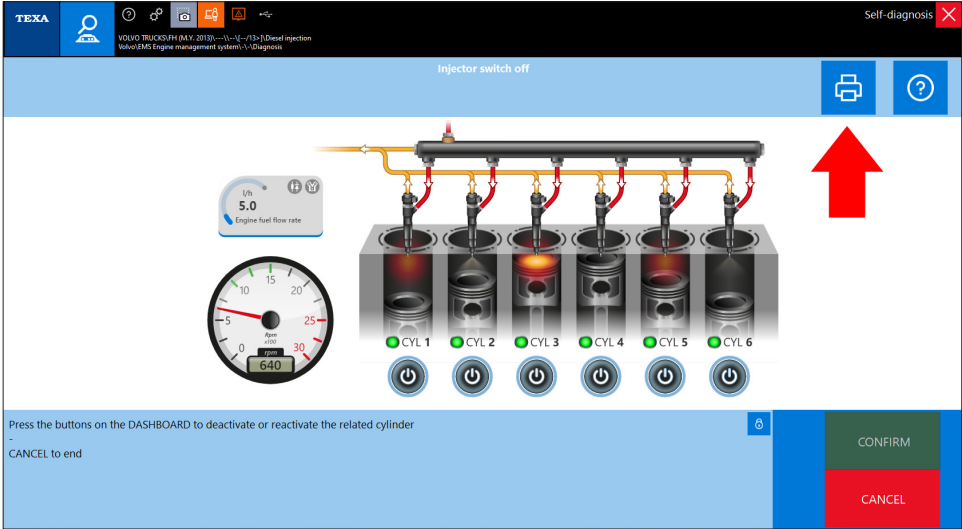
This new sub-family groups all the activations most frequently used when Diagnosing a vehicle.



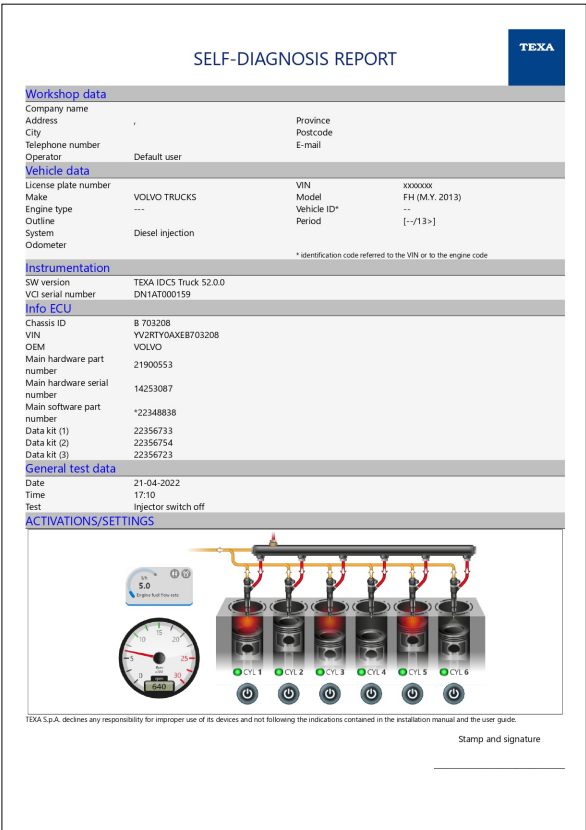
"Most used" sub-family

PRINT button for adjustment and activation DASHBOARDS

Starting from the TRUCK 52 version, a new button has been implemented, for the dashboards associated with the adjustments or activations, that allows printing a report in PDF format.



PRINT button.



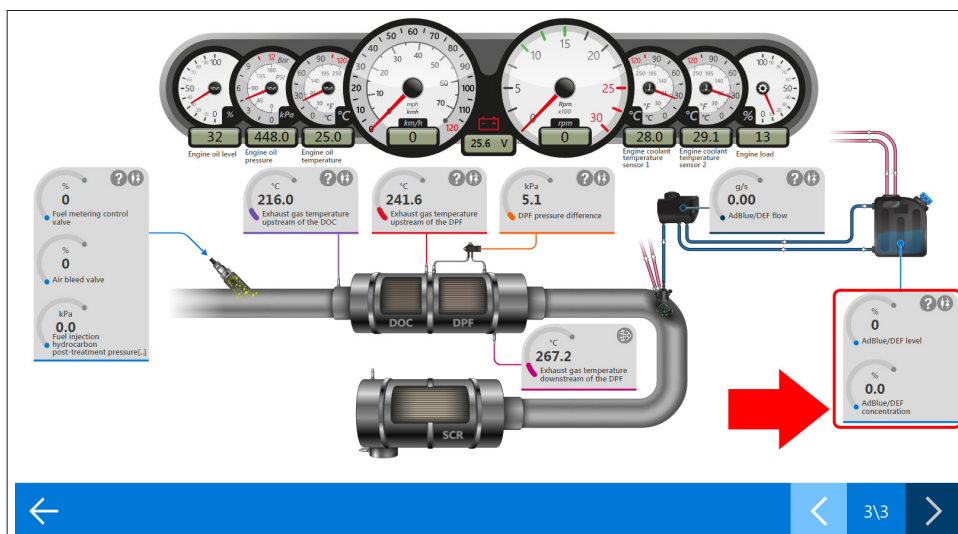
Example of a report.

- Software**
- Generic vehicle search
- System search bar**
- "Most used" sub-family**
- PRINT button for adjustment and activation DASHBOARDS**
- Help section for the DASHBOARD parameters
- Error description display in theTGS3s DASHBOARDS
- Fault notification ticket without Internet connection
- TecRMI menu modifications
- Automatic Troubleshooting translation
- Diagnosis**
- WORLDWIDE Market
- TRUCK
- BUS & COACH
- LIGHT COMMERCIAL VEHICLES
- TRAILERS/SEMI-TRAILERS
- SMALL UTILITY TRUCKS
- NORTH AMERICAN Market
- TRUCK
- BUS & COACH
- LIGHT COMMERCIAL VEHICLES
- Wiring diagrams**
- Dashboard**
- TecRMI technical data**
- Coverage**

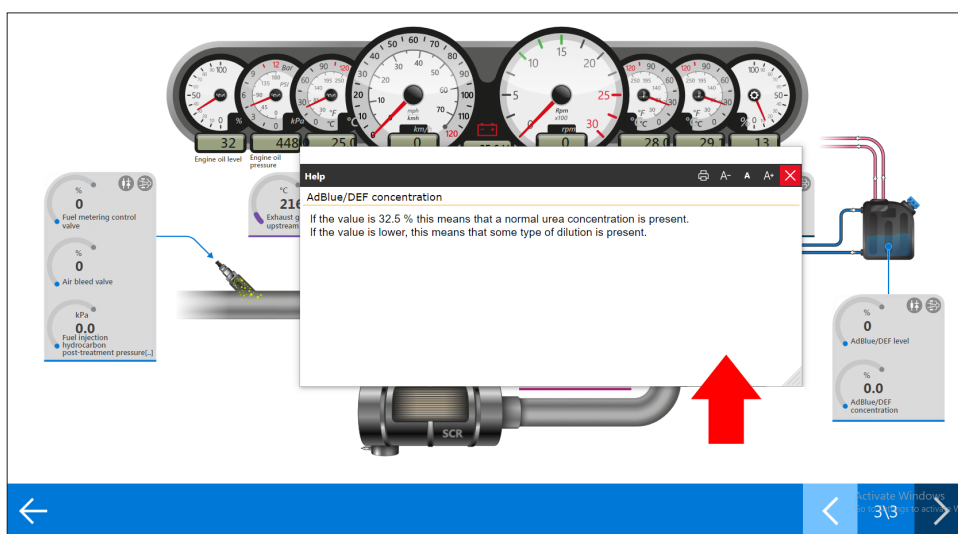
Help section for the DASHBOARD parameters

Starting from the TRUCK 52 version, a new function has been implemented to display the help section directly from the parameter dashboard.

By clicking on the parameter in the dashboard, you will be redirected to the corresponding help section.



Dashboard with help section.



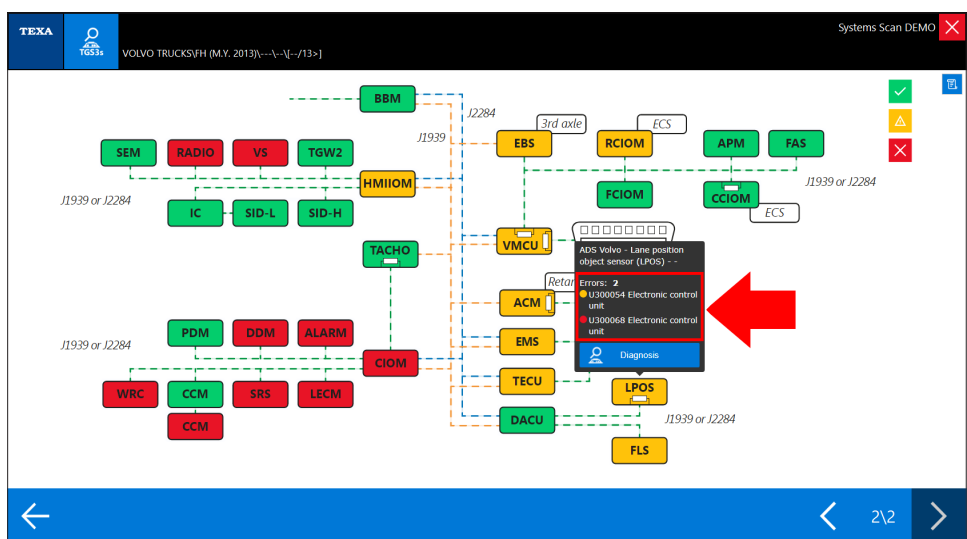
Parameter's help section.

Error description display in the TGS3s DASHBOARDS

Starting from the TRUCK 52 version, a new function has been implemented to display the error description in the TGS3s dashboard.



Error description in the TGS3s DASHBOARD.

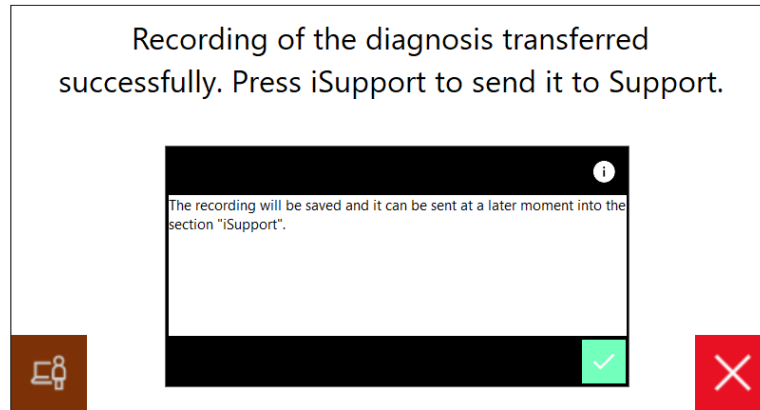


Error description in the TGS3s DASHBOARD.

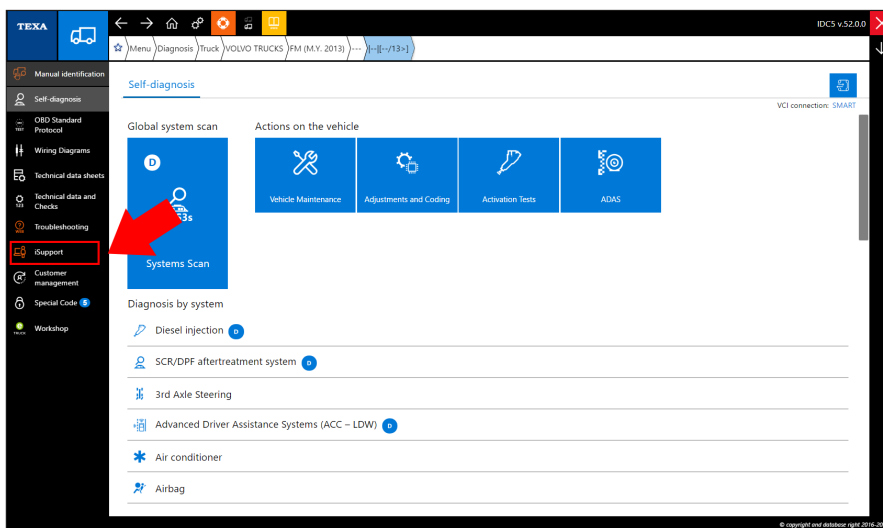
- Software
 - Generic vehicle search
 - System search bar
 - "Most used" sub-family
 - PRINT button for adjustment and activation DASHBOARDS
 - Help section for the DASHBOARD parameters
 - Error description display in the TGS3s DASHBOARDS
 - Fault notification ticket without Internet connection
 - TecRMI menu modifications
 - Automatic Troubleshooting translation
- Diagnosis
 - WORLDWIDE Market
 - TRUCK
 - BUS & COACH
 - LIGHT COMMERCIAL VEHICLES
 - TRAILERS/SEMI-TRAILERS
 - SMALL UTILITY TRUCKS
 - NORTH AMERICAN Market
 - TRUCK
 - BUS & COACH
 - LIGHT COMMERCIAL VEHICLES
 - Wiring diagrams
 - Dashboard
 - TecRMI technical data
 - Coverage

Fault notification ticket without Internet connection

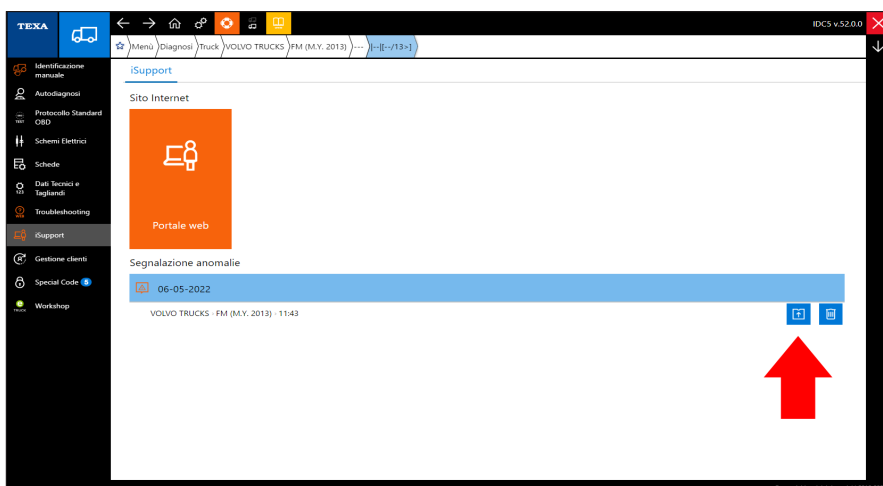
Starting from the TRUCK 52 version, if no Internet connection is available, the fault notification recording file will be saved in the "iSupport" section to be sent at a later time.



Recording successfully saved message.



iSupport button.



Icon to send the recording.



TecRMI menu modifications

Starting from the TRUCK 52 version, the menu to read the TecRMI data has been updated.

You can now search in each column and sort the data in alphabetical order.

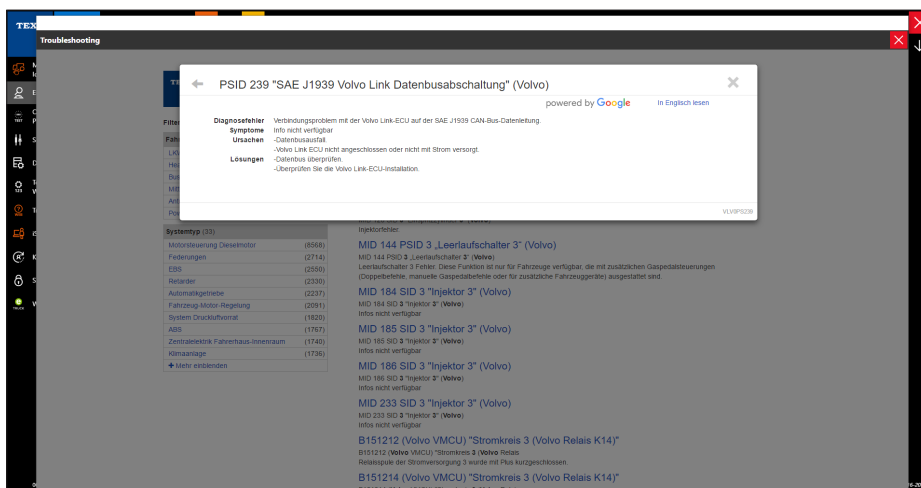
Axle configuration	HP	kW	Engine	ccm	Built in year	Model range	Model year up to
Text search	Text search	Text search	Text search	Text search	Text search	Text search	Text search
6x2/4	509	375	F3HFE611G	12882	2019-07	AS260S51FP	
6x2/4	509	375	F3HFE611G	12882	2019-07	AS260S51P	
6x2	509	375	F3HFE611G	12882	2019-07	AS260S51TP	
6x2	509	375	F3HFE611G	12882	2019-07	AS440S51TP	
4x2	459	338	F3GFE611E	11118	2019-07	AS190S46FP	
4x2	459	338	F3GFE611E	11118	2019-07	AS190S46P	
4x2	420	309	F3GFE611F	11118	2019-07	AS440S42TFP	
4x2	420	309	F3GFE611F	11118	2019-07	AS440S42TP	
4x2	459	338	F3GFE611E	11118	2019-07	AS440S46TFP	
4x2	459	338	F3GFE611E	11118	2019-07	AS440S46TP	
4x2	479	353	F3GFE611G	11118	2019-07	AS440S48TFP	
4x2	479	353	F3GFE611G	11118	2019-07	AS440S48TP	
4x2	509	375	F3HFE611G	12882	2019-07	AS440S51TFP	
4x2	509	375	F3HFE611G	12882	2019-07	AS440S51TP	
4x2	571	420	F3HFE611F	12882	2019-07	AS440S57TFP	

New TecRMI data reading menu.

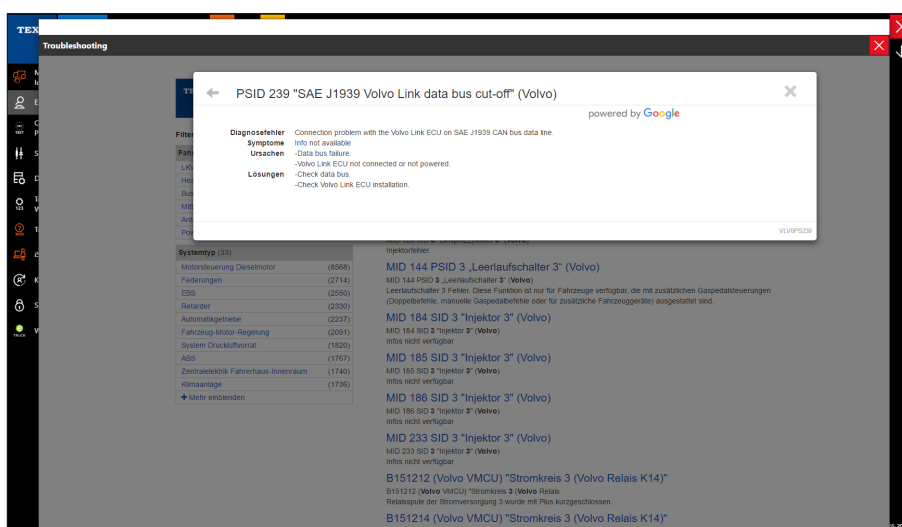
- Software**
- Generic vehicle search
- System search bar
- “Most used” sub-family
- PRINT button for adjustment and activation DASHBOARDS
- Help section for the DASHBOARD parameters
- Error description display in theTGS3s DASHBOARDS
- Fault notification ticket without Internet connection
- TecRMI menu modifications**
- Automatic Troubleshooting translation
- Diagnosis**
- WORLDWIDE Market
- TRUCK
- BUS & COACH
- LIGHT COMMERCIAL VEHICLES
- TRAILERS/SEMI-TRAILERS
- SMALL UTILITY TRUCKS
- NORTH AMERICAN Market
- TRUCK
- BUS & COACH
- LIGHT COMMERCIAL VEHICLES
- Wiring diagrams**
- Dashboard**
- TecRMI technical data**
- Coverage**

Automatic Troubleshooting translation

Starting from the TRUCK 52 version, the automatic translation function has been implemented for the Troubleshooting in the on-line portal. The translation will be provided in the language set in IDC5 and it is also possible to view the original language.



Example of Troubleshooting.



Troubleshooting in the original language.

Diagnosis

TRUCK

AGRALE

- The SCR/DPF after-treatment system "Tenneco XNOx Euro 5" has been updated.

AKIA

- The new model LF25 has been developed.

ALLISON Transmission

- The automatic transmission system "Allison Generation 5" has been updated.
- The automatic transmission system "Allison Generation 3-4" has been updated.

ASTRA

- The new models HD8 Euro 3 (Extra Europe) and HD9 Euro 3 (Extra Europe) have been developed.

BENDIX-KNORR

- The ADAS "Bendix-Knorr Radar sensor FLR 21" has been updated.
- The ADAS "Bendix-Knorr Multifunction camera FLC 20" has been updated.

BMC

- The new model Tugra has been developed.
- The new model Neocity Man has been developed.

BOSCH SCR

- The SCR/DPF after-treatment system "Bosch Denoxtronic 1-2" has been updated.

CATERPILLAR Engine

- The diesel injection system "Caterpillar" has been updated.

CUMMINS Engine

The diesel injection system "Cummins J1939 Core 2" has been updated.
The diesel injection system "Cummins J1708 Core 1" has been updated.

DAF

- The new model XF M.Y. 2022 has been developed.
- The new model XG / XG+ has been developed.
- The suspension system "Wabco ECAS 5" has been updated.
- The diesel injection system "Delphi PCI" has been updated.
- The SCR/DPF after-treatment system "Bosch EAS 1" has been updated.
- The SCR/DPF after-treatment system "Paccar EAS / EAS 2 / EAS 4" has been updated.
- The immobiliser system "Daf Immobilizer" has been updated.
- The EBS system "Wabco EBS 3" has been updated.

Software

Generic vehicle search

System search bar

"Most used" sub-family

PRINT button for adjustment and activation DASHBOARDS

Help section for the DASHBOARD parameters

Error description display in theTGS3s DASHBOARDS

Fault notification ticket without Internet connection

TecRMI menu modifications

Automatic Troubleshooting translation

Diagnosis

WORLDWIDE Market

TRUCK

BUS & COACH

LIGHT COMMERCIAL VEHICLES

TRAILERS/SEMI-TRAILERS

SMALL UTILITY TRUCKS

NORTH AMERICAN Market

TRUCK

BUS & COACH

LIGHT COMMERCIAL VEHICLES

Wiring diagrams

Dashboard

TecRMI technical data

Coverage

- The driver side door system "FAB CDS-4" has been updated.
- The ADAS "Wabco AEBS/ACC distance control" has been updated.

DAF (LATAM)

- The EBS system "Wabco EBS 3" has been updated.
- The driver side door system "FAB CDS-4" has been updated.
- The ADAS "Wabco AEBS/ACC distance control" has been updated.

FORD

- The ABS system "Ford ABS Anti-lock Braking System" has been updated for the model F650 / F750.
- The diesel injection system "Engine control unit" has been updated for the models F- Max and Cargo.

FPT Engine

- The diesel injection system "Bosch EDC 17 CV 41" has been updated.
- The diesel injection system "Bosch EDC 17 C 49 Euro 6" has been updated.

FRESIA

- The new model F90 Series has been developed.

ISUZU

- The SCR/DPF after-treatment system "SCR Exhaust gas treatment" has been updated.
- The ADAS "VAT (View Assist Technology) control unit" has been updated.
- The automatic transmission system "Transtron Smoother" has been updated.
- The diesel injection system "Isuzu Engine control unit" has been updated.
- The SCR/DPF after-treatment system "Bosch Denoxtronic 2.2" has been updated.
- The diesel injection system "Bosch Euro 6" has been updated.

IVECO

- The SCR/DPF after-treatment system "SCR Exhaust gas treatment" has been updated.
- The ADAS "VAT (View Assist Technology) control unit" has been updated.
- The automatic transmission system "Transtron Smoother" has been updated.
- The diesel injection system "Isuzu Engine control unit" has been updated.

- The SCR/DPF after-treatment system "Bosch Denoxtronic 2.2" has been updated.
- The diesel injection system "Bosch Euro 6" has been updated.

IVECO (LATAM)

- The new model Stralis M.Y. 2016 NP (CNG/LNG) has been developed.
- The new model SoulClass Euro 5 has been developed.

KAMAZ

- The automatic transmission system "ZF Tipmatic TraXon" has been updated.
- The body computer system "Kamaz CBCU3 Body" has been updated.

KENWORTH

- The new model LF 45 (LATAM) has been developed.

MAN

- The new models M.Y. 2020 TG-X / TG-S / TG-M / TG-L have been developed.
- The model Lion's City Euro 4 / Euro 5 / EEV has been updated.
- The model TG-A has been updated.
- The CNG injection system "Bosch EGC 4" has been updated.
- The maintenance system "Maintenance with PTM Power Train Module" has been updated.
- The ADAS "Man Radar sensor" has been updated.
- The automatic transmission system "ZF Tipmatic AS-Tronic" has been updated.
- The diesel injection system "Bosch EDC 17 [--/13>--/19]" has been updated.
- The diesel injection system "Bosch EDC MD1CE100 [--/19>]" has been updated.

MERCEDES-BENZ

- The "(HAD) Hydraulic auxiliary drive" system has been developed.
- The battery charger control module system "(RPS) Redundant power supply" has been developed.
- The diesel injection system "MCM Engine management" has been updated.
- The diesel injection system "Bosch MR PF pump (PLD)" has been updated.
- The passenger compartment control system "ASAM Cab management" has been updated.
- The chassis management system "SCH Chassis interface" has been updated.

- The SCR/DPF after-treatment system “Conti Temic ACM Exhaust gas after- treatment” has been updated.
- The diesel injection system Bosch “MR PF pump (PLD)” has been updated.

MITSUBISHI FUSO

- The diesel injection system “Bosch EDC 17” has been updated for the model Canter 4P10.
- The SCR/DPF after-treatment system “SCR Exhaust gas treatment” has been updated for the model Fighter.

RENAULT TRUCK

- All the diagnostic systems in the following models have been updated:
 - C Series Euro 6;
 - D Series 3,5t-7,5t;
 - D Series 7,5t-26t;
 - K Series Euro 6;
 - T Series Euro 6;
 - Access DXI Euro 4/5;
 - Kerax DXI Euro 4/5;
 - Magnum DXI Euro 4/5;
 - Midlum DXI Euro 4/5;
 - Premium DXI Euro 4/5.

SCANIA

- The EBS system “BMS - Brake management system EBS 5.0” has been updated.
- The ADAS “DIS Distance sensor DIS1” has been updated.
- The ADAS “LDW Monitor traffic lane” has been updated.
- The diesel injection system “EMS Engine Management System S8” has been updated.
- The vehicle-engine control system “COO Coordinator module CO08” has been updated.
- The diesel injection system “EMS Engine Management System EMD1” has been updated.
- The “APS Compressed air supply APS2” system has been updated.

SCANIA (LATAM)

- The vehicle-engine control system “COO Coordinator module CO08” has been updated.
- The diesel injection system “EMS Engine Management System EMD1” has been updated.

SINOTRUK

- The new model Sitrak has been developed.
- The diesel injection system “Bosch EDC 17 CV 44 Euro 4/5” has been developed.

SPARTAN

- The new model Metro Star has been developed.

TATA DAEWOO

- The new model Dump Doosan has been developed.

VOLKSWAGEN TRUCK

- The new model Meteor has been developed.

Software

Generic vehicle search

System search bar

“Most used” sub-family

PRINT button for adjustment and activation DASHBOARDS

Help section for the DASHBOARD parameters

Error description display in theTGS3s DASHBOARDS

Fault notification ticket without Internet connection

TecRMI menu modifications

Automatic Troubleshooting translation

Diagnosis

WORLDWIDE Market

TRUCK

BUS & COACH

LIGHT COMMERCIAL VEHICLES

TRAILERS/SEMI-TRAILERS

SMALL UTILITY TRUCKS

NORTH AMERICAN Market

TRUCK

BUS & COACH

LIGHT COMMERCIAL VEHICLES

Wiring diagrams

Dashboard

TecRMI technical data

Coverage

VOLVO TRUCK

• All the diagnostic systems in the following models have been updated:

- FE (M.Y. 2006);
- FE (M.Y. 2013);
- FH (M.Y. 2005);
- FH (M.Y. 2013);
- FH 12;
- FH 16 (M.Y. 1993 & M.Y. 2005);
- FH 16 (M.Y. 2013);
- FL (M.Y. 2013);
- FM (M.Y. 2005);
- FM (M.Y. 2013);
- FM 12;
- FM 9;
- FMX (M.Y. 2010);
- FMX (M.Y. 2013);
- VHD;
- VM;
- VNL;
- VT.

WABCO

- The ABS system "(HBS) Hydraulic anti-lock system" has been developed.
- The suspension system "Wabco ECAS CAN 2" has been updated.
- The EBS system "Wabco EBS" has been updated.
- The ABS system "Wabco E" has been updated.
- The ADAS "Wabco Online LDWS 2" has been updated.
- The EBS system "Wabco T-EBS C-D" has been updated.
- The EBS system "Wabco T-EBS E" has been updated.

ZF

- The automatic transmission system "ZF TraXon" has been updated.
- The automatic transmission system "ZF Ecolife" has been updated.
- The automatic transmission system "ZF AS-Tronic" has been updated.
- The automatic transmission system "ZF Ecomat 2 EST 46/47" has been updated.

BUS & COACH**AGRALE**

• The SCR/DPF after-treatment system "Tenneco XNOx Euro 5" has been updated.

ALLISON Transmission

• The automatic transmission system "Allison Generation 5" has been updated.

BREDAMENARINI

• The diesel injection system "Bosch EDC 17 CV 41" has been updated.

FPT Engine

- The diesel injection system "Bosch EDC 17 CV 41" has been updated.
- The diesel injection system "Bosch EDC 17 C 49" has been updated.

IRIZAR - Body + Chassis

- New models have been developed:
- i3 Scania Euro 6;
- i3 Volvo Euro 6;
- i3 Man Euro 6;

- i4 Scania Euro 6;
- i4 Volvo Euro 6;
- i4 Man Euro 6;
- i6 Scania Euro 6;
- i6 Volvo Euro 6;
- i6 Man Euro 6;
- i6 Man Euro 3;
- i6s Scania Euro 6;
- i6s Volvo Euro 6;
- i6s Man Euro 6;
- i8 Scania Euro 6;
- i8 Volvo Euro 6;
- i8 Man Euro 6.

ISUZU

- The model Turquoise has been updated.

IVECO BUS

- The new model Crossway M.Y. 2021 has been developed.

MAN

- The articulation management system "Pivoting Joint Control" has been developed.
- The network system "Continental ZBR032" has been

developed.

- The maintenance system "Maintenance with PTM Power Train Module" has been updated.
- The ADAS "Man Radar sensor" has been updated.
- The diesel injection system "Bosch EDC MD1CE100 [--/19>]" has been updated

MASCARELLO

- The new model Gran Micro has been developed.

NEOBUS

- The new model Thunder has been developed.

SCANIA

- The EBS system "BMS - Brake management system EBS 5.0" has been updated.
- The ADAS "DIS Distance sensor DIS1" has been updated.
- The ADAS "LDW Monitor traffic lane" has been updated.
- The diesel injection system "EMS Engine Management System S8" has been updated.

WABCO

- The ABS system "(HBS) Hydraulic anti-lock system" has been developed.
- The ABS system "Wabco E" has been updated.
- The ADAS "Wabco Onlane LDWS 2" has been updated.
- The EBS system "Wabco T-EBS C-D" has been updated.
- The EBS system "Wabco T-EBS E" has been updated.

YUTONG

- The new model GT12 DAF has been developed.

ZF

- The automatic transmission system "ZF TraXon" has been updated.
- The automatic transmission system "ZF Ecolife" has been updated.
- The automatic transmission system "ZF AS-Tronic" has been updated.

LIGHT COMMERCIAL VEHICLES

CITROEN

- New models have been developed:
- Dispatch [20>] (K0) EV;
- Jumpy [20>] (K0) EV;
- Type HG;
- Type HG (EV);
- Type H.
- The model Jumper [15>] (U9) has been updated.

DODGE

- The model RAM Fourth Generation [09>] has been updated.

Software

Generic vehicle search

System search bar

"Most used" sub-family

PRINT button for adjustment and activation DASHBOARDS

Help section for the DASHBOARD parameters

Error description display in theTGS3s DASHBOARDS

Fault notification ticket without Internet connection

TecRMI menu modifications

Automatic Troubleshooting translation

Diagnosis

WORLDWIDE Market

TRUCK

BUS & COACH

LIGHT COMMERCIAL VEHICLES

TRAILERS/SEMI-TRAILERS

SMALL UTILITY TRUCKS

NORTH AMERICAN Market

TRUCK

BUS & COACH

LIGHT COMMERCIAL VEHICLES

Wiring diagrams

Dashboard

TecRMI technical data

Coverage

FIAT PROFESSIONAL

- The SCR/DPF after-treatment system "SCR Exhaust gas treatment" has been developed for the model Talento.
- The model Doblò Cargo (263) has been updated.
- The model Ducato (X250) FL [11>14] has been updated.
- The model Ducato (X290) FL [14>] has been updated.

FORD

- The new model Transit 2019 has been developed.
- The new model Transit Connect / Tourneo Connect 2019 has been developed.
- The model Transit 2006-2014 has been updated.
- The model Transit 2014 has been updated.
- The model Transit Connect / Tourneo Connect 2014 has been updated.

GREAT WALL

- The new model Wingle 5 [10>] has been developed.
- The new model Wingle 6 [14>] has been developed

IVECO

- The new model Daily 19 (Extra Europe) has been developed.
- The ADAS "Lane departure warning system LDWS" has been developed for the model Daily 19.
- The ADAS "AEBS/ACC distance control" has been developed for the model Daily 19.
- The model Daily 06 has been updated.
- The model Daily 14 has been updated.
- The model Daily 16 has been updated.
- The automatic transmission system "ZF Agile" has been updated.

IVECO (LATAM)

- The new model Daily 19 (Extra Europe) has been developed.

MAN

- The model TGE has been updated.

MERCEDES-BENZ

- The new model Sprinter IV (907/910) M.Y. 2018 [--/20>] has been developed.
- The new models Vito [14>] (447) VAN [--/20>] and V-Klasse [14>] (447) [--/20>] have been developed.
- The model Sprinter III (906) M.Y. 2013 has been updated.
- The model Sprinter (907/910) [--/18>] has been updated.
- The model V-Klasse [14>] (447) has been updated.
- The model Vito [14>] (447) VAN has been updated.

NISSAN

- The new model NV 400 [19>] has been developed.
- The diesel injection system "Bosch MD1CS006" has been developed for the model NV 300.
- The model NV 400 [10>14] has been updated.
- The model NV 400 [14>19] has been updated.

OPEL

- The new model Movano B [19>] has been developed.
- The new model the Vivaro-C [19>] (K0) has been developed.
- The model Movano B [10>14] has been updated.
- The model Movano B [14>19] has been updated.

PEUGEOT

- The new model Expert [20>] (K0) EV has been developed.
- The model Boxer [15>] (U9) has been updated.
- The diesel injection system "Visteon" has been updated.

RENAULT

- The new model Master 3 [19>] has been developed.
- The model Master 3 [10>14] has been updated.
- The model Master 3 [14>19] has been updated.
- The model Trafic III has been updated. [14>19].

TOYOTA

- The new model Proace Verso [21>] EV has been developed.

VOLKSWAGEN

- New models have been developed:
 - California T6.1 [19>] (SHC);
 - Caravelle T6.1 [19>] (SH);
 - Multivan T6.1 [19>] (SH);
 - Transporter T6.1 [19>] (SH-SJ).
- The model Crafter [16>] (SY-SZ) has been updated.
- The model Caddy [10>15] (2C) has been updated.
- The model Transporter T5 [09>15] (7E-7F) has been updated.

TRAILERS/SEMI-TRAILERS

KNORR-BREMSE

- The EBS system "Knorr-Bremse TEBS Generation 2" has been updated.

SMALL UTILITY TRUCKS

KÄRCHER

- The following models have been developed:
- MC / MCM Series;
- MIC Series.

MATHIEU

- The new model Azura Series has been developed.

Software

Generic vehicle search

System search bar

"Most used" sub-family

PRINT button for adjustment and activation DASHBOARDS

Help section for the DASHBOARD parameters

Error description display in the TGS3s DASHBOARDS

Fault notification ticket without Internet connection

TecRMI menu modifications

Automatic Troubleshooting translation

Diagnosis

WORLDWIDE Market

TRUCK

BUS & COACH

LIGHT COMMERCIAL VEHICLES

TRAILERS/SEMI-TRAILERS

SMALL UTILITY TRUCKS

NORTH AMERICAN Market

TRUCK

BUS & COACH

LIGHT COMMERCIAL VEHICLES

Wiring diagrams

Dashboard

TecRMI technical data

Coverage

TRUCK

ALLISON Transmission

- The automatic transmission system "Allison Generation 5" has been updated.

BENDIX-KNORR

- The ADAS "Bendix-Knorr Radar sensor FLR 21" has been updated.
- The ADAS "Bendix-Knorr Multifunction camera FLC 20" has been updated.

CATERPILLAR Engine

- The diesel injection system "Caterpillar" has been updated.

CUMMINS Engine

- The Diesel injection system "Cummins J1939 Core 2" has been updated.
- The diesel injection system "Cummins J1708 Core 1" has been updated.

DETROIT Engine

- The diesel injection system "Detroit – MBE EPA 07 -> GHG" has been updated.

FREIGHTLINER

- The model Detroit Diesel - Mercedes Benz has been updated.

GMC

New models have been developed:

- ABS;
- Stripped Chassis 3.0 Diesel 4JJ1 [2015], [2016], [2017], [2018];
- W Series Chassis 3.0 Diesel 4JJ1 [2015], [2016], [2017], [2018].

HINO

- The diesel injection system "Denso Common Rail EPA 98 -> EPA 07 K Line" has been updated.

INTERNATIONAL

- The "International – Stoneridge Body controller Gateway" system has been updated.

ISUZU (North America)

New models have been developed:

- Stripped Chassis 3.0 Diesel 4JJ1 [2015], [2016], [2017], [2018];
- N Series Chassis 3.0 Diesel 4JJ1 [2015], [2016], [2017], [2018].
- The SCR/DPF after-treatment system "Bosch Denoxtronic 2.2" has been updated.

KENWORTH

- The gateway system "Continental VDO (CAB) Electronic control unit 3" has been updated.
- The diesel injection system "Delphi PCI EPA 13 -> GHG 16" has been updated.
- The SCR/DPF after-treatment system "Paccar EAS 4 EPA 13 -> GHG" has been updated.
- The EBS system "Wabco EBS 3" has been updated for the models K270 and K370.
- The driver side door system "FAB CDS-4" has been updated for the models K270 and K370.

MACK

- The model Mack IV+ Generation with OBD II 16 PIN connector has been updated.
- The model Mack IV Generation with DEUTSCH 9 PIN connector has been updated.

mitsubishi FUSO

- The diesel injection system "Bosch EDC 17" has been updated for the model Canter 4P10.
- The SCR/DPF after-treatment system "SCR Exhaust gas treatment" has been updated for the model Fighter.

PACCAR Engine

- The SCR/DPF after-treatment system "EAS 3 EPA 13 -> GHG 16" has been updated.
- The diesel injection system "PCI EPA 13 -> GHG 16" has been updated.
- The diesel injection system "PMCI 2 EPA 10 -> GHG 16" has been updated.

PETERBILT

- The model 220 has been updated.
- The gateway system "Continental VDO (CAB) Electronic control unit 3" has been updated.
- The diesel injection system "PCI EPA 13 -> GHG 16" has been updated.
- The SCR/DPF after-treatment system "Paccar EAS 4 EPA 13 -> GHG" has been updated.

PIERCE

- New models have been developed:
- Cummins;
- Paccar.

SPARTAN

- The new model Metro Star has been developed.

VOLVO TRUCK

- The model Volvo Vehicles with OBD II 16 PIN connector has been updated.
- The model Volvo Vehicles with DEUTSCH 9 PIN connector has been updated.
- The central interface module system "CCIOM Central Chassis I/O Module" has been updated.
- The rear interface module system "RCIOM Rear Chassis I/O Module" has been updated.

WABCO

- The ABS system "(HBS) Hydraulic anti-lock system" has been developed.
- The suspension system "Wabco ECAS CAN 2" has been updated.
- The ABS system "Wabco E" has been updated.

WESTERN STAR

- The diesel injection system "Detroit – MBE EPA 07 -> GHG" has been updated.

ZF

- The automatic transmission system "ZF Ecolife" has been updated.

Software

Generic vehicle search

System search bar

"Most used" sub-family

PRINT button for adjustment and activation DASHBOARDS

Help section for the DASHBOARD parameters

Error description display in theTGS3s DASHBOARDS

Fault notification ticket without Internet connection

TecRMI menu modifications

Automatic Troubleshooting translation

Diagnosis

WORLDWIDE Market

TRUCK

BUS & COACH

LIGHT COMMERCIAL VEHICLES

TRAILERS/SEMI-TRAILERS

SMALL UTILITY TRUCKS

NORTH AMERICAN Market

TRUCK

BUS & COACH

LIGHT COMMERCIAL VEHICLES

Wiring diagrams

Dashboard

TecRMI technical data

Coverage

BUS & COACH**ALLISON Transmission**

- The automatic transmission system "Allison Generation 5" has been updated.

BENDIX-KNORR

- The ADAS "Bendix-Knorr Radar sensor FLR 21" has been updated.
- The ADAS "Bendix-Knorr Multifunction camera FLC 20" has been updated.

CATERPILLAR Engine

- The diesel injection system "Caterpillar" has been updated.

CUMMINS Engine

- The Diesel injection system "Cummins J1939 Core 2" has been updated.
- The diesel injection system "Cummins J1708 Core 1" has been updated.

DETROIT Engine

- Aggiornato il sistema Iniezione Diesel "Detroit – MBE EPA
- The diesel injection system "Detroit – MBE EPA 07 -> GHG" has been updated.

INTERNATIONAL

- The "International – Stoneridge Body controller Gateway" system has been updated.

PACCAR Engine

- The diesel injection system "EAS 3 EPA 13 -> GHG 16" has been updated.
- The diesel injection system "PCI EPA 13 -> GHG 16" has been updated.
- The diesel injection system "PMCI 2 EPA 10 -> GHG 16" has been updated.

WABCO

- The ABS system "(HBS) Hydraulic anti-lock system" has been developed.
- The suspension system "Wabco ECAS CAN 2" has been updated.
- The ABS system "Wabco E" has been updated.

ZF

- The automatic transmission system "ZF Ecolife" has been updated.

LIGHT COMMERCIAL VEHICLES**CHEVROLET**

- The model Silverado [14>19] has been updated.
- The model Silverado [19>] has been updated.

DODGE

- The model RAM Fourth Generation [09>] has been updated.

FORD

- The new model F Series Super Duty Boss 6.2 [2020>] has been developed.
- The new model F Series Super Duty Godzilla 7.3 [2020>] has been developed.
- The new model F Series Super Duty Power Stroke 6.7 [2020>] has been developed.
- The new model F650 / F750 Power Stroke 6.7 [2021>] has been developed.
- The model F Series Super Duty [2017>2019] has been updated.

FREIGHTLINER

- The model Sprinter 2500 – 3500 has been updated.
- The "ADAS" and "Instrumentation" systems have been updated for the model Metris (447).

GMC

- The model Sierra [14>19] has been updated.
- The model Sierra [19>] has been updated.

MERCEDES-BENZ

- The new model Sprinter (907/910) [--/20>] has been developed.
- The model Sprinter 2500 - 3500 (906) has been updated.
- The model Sprinter (907/910) [--/18>] has been updated.

Wiring diagrams

ALLISON Transmission

- New wiring diagrams have been developed for the automatic transmission system "Allison Generation 4-5 1000 / 2000 Series".
- New wiring diagrams have been developed for the automatic transmission system "Allison Generation 5".

AEBI

New wiring diagrams have been developed for the models:

- MT Series;
- Vario.

ASTRA

New wiring diagrams have been developed for the models:

- HD8 Euro 3 (Africa & Middle East);
- HD9 Euro 3 (Africa & Middle East).

BENDIX-KNORR

- New wiring diagrams have been developed for the ADAS "Bendix-Knorr Radar sensor FLR 21".
- New wiring diagrams have been developed for the ADAS "Bendix-Knorr Multifunction camera FLC 20".

BMC

- New wiring diagrams have been developed for the model:
- Tugra.

BONETTI

- New wiring diagrams have been developed for the diesel injection system "EDC 17 CV 41".
- New wiring diagrams have been developed for the diesel injection system "EDC 17 C 49".

BUCHER-SCHÖRLING

- New wiring diagrams have been developed for the models:
- CityCat Series;
- CityLav Series.

BREDAMENARINI

- New wiring diagrams have been developed for the CNG injection system "Bosch EGC 4".

CATERPILLAR Engine

- New wiring diagrams have been developed for the diesel injection system "Caterpillar [--/00>]".

CHEVROLET

New wiring diagrams have been developed for the model:

- Kodiak 7.8 Diesel [2004].

Software

Generic vehicle search

System search bar

"Most used" sub-family

PRINT button for adjustment and activation DASHBOARDS

Help section for the DASHBOARD parameters

Error description display in theTGS3s DASHBOARDS

Fault notification ticket without Internet connection

TecRMI menu modifications

Automatic Troubleshooting translation

Diagnosis

WORLDWIDE Market

TRUCK

BUS & COACH

LIGHT COMMERCIAL VEHICLES

TRAILERS/SEMI-TRAILERS

SMALL UTILITY TRUCKS

NORTH AMERICAN Market

TRUCK

BUS & COACH

LIGHT COMMERCIAL VEHICLES

Wiring diagrams

Dashboard

TecRMI technical data

Coverage

CITROEN

New wiring diagrams have been developed for the model:

- Dispatch [>07] (UK).

CUMMINS Engine

• New wiring diagrams have been developed for the diesel injection system "Cummins".

• New wiring diagrams have been developed for the CNG injection system "Cummins".

DAF

New wiring diagrams have been developed for the models:

- XF M.Y. 2017;
- LF M.Y. 2013;
- CF M.Y. 2013;
- XF M.Y. 2017.

DAF (LATAM)

New wiring diagrams have been developed for the models:

- XF M.Y. 2019;
- CF M.Y. 2019.

DENNIS EAGLE

New wiring diagrams have been developed for the model:

- Elite 6.

FAST

• New wiring diagrams have been developed for the compressed air reservoir system "Knorr-Bremse APM/EAC + Reprogramming".

FPT Engine

New wiring diagrams have been developed for the models:

- Cursor;
- F1A - F1C.

IVECO

New wiring diagrams have been developed for the model:

- EuroCargo Euro 4 / Euro 5 / EEV (Russian Market).
- New wiring diagrams have been developed for the models:
- Daily 06;
- Daily 16;
- Daily 19 (Extra Europa).

New wiring diagrams have been developed for the models:

- Stralis Euro 4 / Euro 5 / EEV M.Y. 2007;
- Stralis Euro 6 M.Y. 2013;
- Stralis M.Y. 2016 NP (CNG/LNG);
- Stralis M.Y. 2013 NP (CNG/LNG);
- Stralis Euro 6 M.Y. 2016;

- Stralis X-Way Euro 6 M.Y. 2019;
- Trakker Euro 4 / Euro 5 / EEV;
- Trakker Euro 6.

IVECO (LATAM)

New wiring diagrams have been developed for the models:

- Daily Euro 4;
- Daily Euro 5;
- Daily Euro 5+;
- Daily 19 Euro 5+;
- Cityclass Euro 3 / Euro 4;
- Cityclass Euro 5;
- SoulClass Euro 5;
- Wayclass Euro 5.

New wiring diagrams have been developed for the models:

- Cursor;
- Stralis Euro 3 M.Y. 2005;
- Trakker Euro 5;
- Stralis Euro 4 / Euro 5 / EEV M.Y. 2012;
- Stralis M.Y. 2019 NP (CNG/LNG).

LINDNER

• New wiring diagrams have been developed for the model:

- Unitrac Series.

KÄRCHER

New wiring diagrams have been developed for the model:

- MC / MCM Series VM.

JOHNSTON

New wiring diagrams have been developed for the model:

- C-Series.

MACK

New wiring diagrams have been developed for the model:

- Mack IV+ Generation with OBD II 16 PIN connector.

MAN

New wiring diagrams have been developed for the models:

- TGE;
- TG-L;
- TG-L M.Y. 2013.

MATHIEU

New wiring diagrams have been developed for the model:

- Azura Series VM.

MERCEDES-BENZ

New wiring diagrams have been developed for the models:



- Actros MPIV (M.Y. 2011);
- Actros MPV (M.Y. 2019);
- Arocs MPIV;
- Arocs MPV;
- Atego Euro 6 (967).
- Sprinter IV (907/910) M.Y. 2018.

MITSUBISHI FUSO

New wiring diagrams have been developed for the models:

- Fighter;
- FV500.

MULTICAR

New wiring diagrams have been developed for the models:

- M31;
- M29 VM.

MWM Engine

• New wiring diagrams have been developed for the SCR/DPF after-treatment system "Tenneco XNOx".

OPTARE

New wiring diagrams have been developed for the model:

- Solo Mercedes Euro 4/5.

OTOKAR

New wiring diagrams have been developed for the model:

- Kent Series.

RAVO

New wiring diagrams have been developed for the model:

- 5-iSeries VM.

REFORM

New wiring diagrams have been developed for the models:

- Muli Series;
- Boki Series FPT.

RENAULT TRUCK

New wiring diagrams have been developed for the models:

- Access DXI Euro 4/5;
- Kerax DXI Euro 4/5;
- Magnum DXI Euro 4/5;
- Midlum DXI Euro 4/5;
- Premium DXI Euro 4/5.

RENAULT TRUCK (LATAM)

New wiring diagrams have been developed for the model:

- Midlum DXI Euro 4/5.

Software

Generic vehicle search

System search bar

"Most used" sub-family

PRINT button for adjustment and activation DASHBOARDS

Help section for the DASHBOARD parameters

Error description display in theTGS3s DASHBOARDS

Fault notification ticket without Internet connection

TecRMI menu modifications

Automatic Troubleshooting translation

Diagnosis

WORLDWIDE Market

TRUCK

BUS & COACH

LIGHT COMMERCIAL VEHICLES

TRAILERS/SEMI-TRAILERS

SMALL UTILITY TRUCKS

NORTH AMERICAN Market

TRUCK

BUS & COACH

LIGHT COMMERCIAL VEHICLES

Wiring diagrams

Dashboard

TecRMI technical data

Coverage

SCANIA

New wiring diagrams have been developed for the models:

- Citywide Euro 6;
- G-Series M.Y. 2003;
- G-Series M.Y. 2013;
- Higer A30 Euro 6;
- OmniExpress Euro 6;
- P-Series M.Y. 2003;
- P-Series M.Y. 2013;
- R-Series M.Y. 2003;
- R-Series M.Y. 2013;
- Touring Euro 6.

SCANIA (LATAM)

New wiring diagrams have been developed for the models:

- G-Series Euro 3;
- G-Series Euro 4 / Euro 5 / EEV;
- G-Series Euro 6 M.Y. 2013;
- P-Series Euro 3;
- P-Series Euro 4 / Euro 5 / EEV;
- P-Series Euro 6 M.Y. 2013;
- R-Series Euro 3;
- R-Series Euro 4 / Euro 5 / EEV;
- R-Series Euro 6 M.Y. 2013.

SCANIA Engine

- New wiring diagrams have been developed for the SCR/DPF after-treatment system "EEC Exhaust gas treatment".
- New wiring diagrams have been developed for the diesel injection system "EMS Engine management system S6/S7".
- New wiring diagrams have been developed for the diesel injection system "EMS Engine management system S8".

SINOTRUK

New wiring diagrams have been developed for the models:

- Howo A7;
- Sitrak.

TEKNE

- New wiring diagrams have been developed for the model:
- Graelion.

UD TRUCK

- New wiring diagrams have been developed for the models:
- Condor;
- Quester;
- Quon.

VOITH

- New wiring diagrams have been developed for the automatic transmission system "Voith DIWA.3".

VOLKSWAGEN

New wiring diagrams have been developed for the models:

- California T6 [15>19] (SG);
- Caravelle T6 [15>19] (SG);
- Multivan T6 [15>19] (SG);
- Transporter T6 [15>19] (SG-SF);
- California T6.1 [19>] (SHC);
- Caravelle T6.1 [19>] (SH);
- Multivan T6.1 [19>] (SH);
- Transporter T6.1 [19>] (SH-SJ);
- Crafter [16>] (SY-SZ).

VOLVO BUS

New wiring diagrams have been developed for the models:

- 7900;
- 8900;
- 9500;
- 9900;
- 9700;
- 8300;
- 9300;
- B Series & Chassis Series.

VOLVO TRUCK

New wiring diagrams have been developed for the models:

- FH (M.Y. 2005);
- FH (M.Y. 2005);
- FH (M.Y. 2013);
- FH 16 (M.Y. 1993 & M.Y. 2005);
- FH 16 (M.Y. 2013);
- FM (M.Y. 2005);
- FM (M.Y. 2013);
- FMX (M.Y. 2013);
- NH 12.

VOLVO TRUCK (LATAM)

New wiring diagrams have been developed for the models:

- FH (M.Y. 2013);
- FMX (M.Y. 2013);
- FH 16 (M.Y. 2013).

ZF

- New wiring diagrams have been developed for the automatic transmission system "ZF AS-Tronic".
- New wiring diagrams have been developed for the automatic transmission system "ZF Ecomat 1 EST 18".
- New wiring diagrams have been developed for the automatic transmission system "ZF Ecomat 2 EST 46/47".
- New wiring diagrams have been developed for the automatic transmission system "ZF Ecolife".

Consulting a wiring diagram

The interaction (diagnosis link) with the wiring diagrams in the following models has been improved:

ASTRA

- HD8 Euro 3 (Africa & Middle East);
- HD9 Euro 3 (Africa & Middle East)

BMC

- Tugra.

CHEVROLET

- Kodiak 7.8 Diesel [2004].

CITROEN

- Dispatch [>07] (UK).

DAF

- XF M.Y. 2017;
- LF M.Y. 2013;
- CF M.Y. 2013;
- XF M.Y. 2017.

DAF (LATAM)

- XF M.Y. 2019;
- CF M.Y. 2019.

DENNIS EAGLE

- Elite 6.

IVECO

- Daily 16;
- EuroCargo Euro 4 / Euro 5 / EEV (Russian Market);
- Stralis Euro 4 / Euro 5 / EEV M.Y. 2007;
- Stralis Euro 6 M.Y. 2013;
- Stralis Euro 6 M.Y. 2016;
- Stralis M.Y. 2016 NP (CNG/LNG);
- Stralis M.Y. 2019 NP (CNG/LNG).
- Stralis X-Way Euro 6 M.Y. 2019;
- Trakker Euro 4 / Euro 5 / EEV;
- Trakker Euro 6.

IVECO (LATAM)

- Cityclass Euro 3 / Euro 4;
- Cityclass Euro 5;
- Cursor;
- Daily Euro 4;

Software

Generic vehicle search

System search bar

"Most used" sub-family

PRINT button for adjustment and activation DASHBOARDS

Help section for the DASHBOARD parameters

Error description display in theTGS3s DASHBOARDS

Fault notification ticket without Internet connection

TecRMI menu modifications

Automatic Troubleshooting translation

Diagnosis

WORLDWIDE Market

TRUCK

BUS & COACH

LIGHT COMMERCIAL VEHICLES

TRAILERS/SEMI-TRAILERS

SMALL UTILITY TRUCKS

NORTH AMERICAN Market

TRUCK

BUS & COACH

LIGHT COMMERCIAL VEHICLES

Wiring diagrams

Dashboard

TecRMI technical data

Coverage

- Daily Euro 5;
- Daily Euro 5+;
- SoulClass Euro 5;
- Stralis Euro 3 M.Y. 2005;
- Stralis Euro 4 / Euro 5 / EEV M.Y. 2012;
- Tector Euro 5;
- Trakker Euro 5;
- Wayclass Euro 5.

MACK

- Mack IV+ Generation with OBD II 16 PIN connector.

MAN

- TGE;
- TG-L;
- TG-L M.Y. 2013.

MERCEDES-BENZ

- Actros MPIV (M.Y. 2011);
- Actros MPV (M.Y. 2019);
- Arocs MPIV;
- Arocs MPV;
- Atego Euro 6 (967);
- Sprinter IV (907/910) M.Y. 2018.

MITSUBISHI FUSO

- Fighter;
- FV500.

MULTICAR

- M31.

OTOKAR

- Kent Series.

REFORM

- Boki Series.

RENAULT TRUCK

- Access DXI Euro 4/5;
- Kerax DXI Euro 4/5;
- Magnum DXI Euro 4/5;
- Midlum DXI Euro 4/5;
- Premium DXI Euro 4/5.

RENAULT TRUCK (LATAM)

- Midlum DXI Euro 4/5.

SCANIA

- Citywide Euro 6;
- G-Series M.Y. 2003;
- G-Series M.Y. 2013;
- Higer A30 Euro 6;
- OmniExpress Euro 6;
- P-Series M.Y. 2003;
- P-Series M.Y. 2013;
- R-Series M.Y. 2003;
- R-Series M.Y. 2013;
- Touring Euro 6.

SCANIA (LATAM)

- G-Series Euro 3;
- G-Series Euro 4 / Euro 5 / EEV;
- G-Series Euro 6 M.Y. 2013;
- P-Series Euro 3;
- P-Series Euro 4 / Euro 5 / EEV;
- P-Series Euro 6 M.Y. 2013;
- R-Series Euro 3;
- R-Series Euro 4 / Euro 5 / EEV;
- R-Series Euro 6 M.Y. 2013.

SINOTRUK

- Howo A7;
- Sitrak.

TEKNE

- Graelion.

UD TRUCK

- Condor;
- Quester;
- Quon.

VOLKSWAGEN

- California T6 [15>19] (SG);
- California T6.1 [19>] (SHC);
- Caravelle T6 [15>19] (SG);
- Caravelle T6.1 [19>] (SH);
- Crafter [16>] (SY-SZ);
- Multivan T6 [15>19] (SG);
- Multivan T6.1 [19>] (SH);
- Transporter T6 [15>19] (SG-SF);
- Transporter T6 [15>19] (SG-SF);
- Transporter T6.1 [19>] (SH-SJ).

VOLVO BUS

- 7900;
- 8300;
- 8900;
- 9300;
- 9500;
- 9700;
- 9900;
- B Series & Chassis Series.

VOLVO TRUCK

- FE (M.Y. 2013);
- FH (M.Y. 2005);
- FH (M.Y. 2013);
- FH 16 (M.Y. 1993 & M.Y. 2005);
- FH 16 (M.Y. 2013);
- FL (M.Y. 2013).
- FM (M.Y. 2005);
- FM (M.Y. 2013);
- FMX (M.Y. 2013);
- NH 12.

VOLVO TRUCK (LATAM)

- FH (M.Y. 2013);
- FMX (M.Y. 2013);
- FH 16 (M.Y. 2013).
- Series F & K;
- Touring Euro 4 / Euro 5 / EEV.

Software

Generic vehicle search

System search bar

"Most used" sub-family

PRINT button for adjustment and activation DASHBOARDS

Help section for the DASHBOARD parameters

Error description display in theTGS3s DASHBOARDS

Fault notification ticket without Internet connection

TecRMI menu modifications

Automatic Troubleshooting translation

Diagnosis

WORLDWIDE Market

TRUCK

BUS & COACH

LIGHT COMMERCIAL VEHICLES

TRAILERS/SEMI-TRAILERS

SMALL UTILITY TRUCKS

NORTH AMERICAN Market

TRUCK

BUS & COACH

LIGHT COMMERCIAL VEHICLES

Wiring diagrams

Dashboard

TecRMI technical data

Coverage

Dashboard

A new type of dashboard with interactive buttons and components has been developed.

ALLISON Transmission

- New dashboards have been developed for all the vehicles with the automatic transmission system "Allison Generation 5".

BENDIX-KNORR

- New dashboards have been developed for all the vehicles with the ABS system "Bendix-Knorr".

CATERPILLAR Engine

- New dashboards have been developed for all the vehicles with the diesel injection system "Caterpillar".

CITROEN

- New dashboards have been developed for the model:
- Jumper [15>] (U9).

CREDO

- New dashboards have been developed for the diesel injection system "Bosch EDC 17 CV 41".

CUMMINS Engine

- New dashboards have been developed for all the vehicles with the diesel injection system "Cummins

DAF

- New TGS3 dashboards have been developed for the model CF M.Y. 2017 (F7/BH).
- New dashboards have been developed for the third axle steering system "VSE EMAS".
- New dashboards have been developed for the driver side door system "FAB CDS-4".
- New dashboards have been developed for the diesel injection system "Cummins ECS-DC5 Euro 5 / EEV".
- New dashboards have been developed for the diesel injection system "Paccar – Cummins ECS-DC6 Euro 6".

- New dashboards have been developed for the SCR/DPF after-treatment system "Continental EAS 3".
- New dashboards have been developed for the compressed air reservoir system "(SAC) Smart Air supply Control".

DETROIT Engine

- New dashboards have been developed for all the vehicles with the diesel injection system "Detroit EPA 98 -> EPA 04".

FIAT PROFESSIONAL

New dashboards have been developed for the model:

- Talento [16>] (296).

FORD

- New dashboards have been developed for the models:
- Cargo;
- F-Max.
- New dashboards have been developed for the diesel injection system "(PCM) Powertrain Control Module".
- New dashboards have been developed for the forward-looking camera system "(IPM- A) Image Processing Module".

FPT Engine

- New dashboards have been developed for the diesel injection system "Bosch EDC 7 UC 31".
- New dashboards have been developed for the SCR/DPF after-treatment system "Bosch Denoxtronic 1-2".

FREIGHTLINER

New TGS3 dashboards have been developed for the models:

- Caterpillar;
- Cummins.
- New dashboards have been developed for the EBS system "EBS Detroit protocol".
- New dashboards have been developed for the ADAS "(MPC) Multi-Purpose Camera".
- New dashboards have been developed for the ADAS

“(RDF) Front radar sensor”.

- New dashboards have been developed for the diesel injection system “Detroit – MBE EPA 07 -> GHG”.
- New dashboards have been developed for the ABS system “ABS/ESP Anti-lock Braking System”.
- New dashboards have been developed for the chassis management system “SAM Cabin Module”.
- New dashboards have been developed for the driver side door system “DCMD Driver’s door”.
- New dashboards have been developed for the passenger side door system “DCMD Passenger’s door”.

GMC

New TGS3 dashboards have been developed for the models:

- Stripped Chassis 3.0 Diesel 4JJ1;
- W Series 3.0 Diesel 4JJ1;
- W Series 5.2 Diesel 4HK1 [2016], [2017], [2018], [2019], [2020], [2021].

HINO

New TGS3 dashboards have been developed for the models:

- 300 Series;
- 500 Series;
- 700 Series.
- New dashboards have been developed for the diesel injection system “Denso Common Rail Diagnosis on line K”.
- New dashboards have been developed for the SCR/DPF after-treatment system “SCR Urea Dosing Control Unit (DCU)”.

INTERNATIONAL

New TGS3 dashboards have been developed for the models:

- Cummins;
- Detroit Diesel - Mercedes Benz;
- MWM.

ISUZU

New dashboards have been developed for the models:

- F-Series;
- Novociti;
- N-Series;
- Turquoise;
- Giga Series 6UZ1 / 6WG1.

New TGS3 dashboards have been developed for the models:

Software

Generic vehicle search

System search bar

“Most used” sub-family

PRINT button for adjustment and activation DASHBOARDS

Help section for the DASHBOARD parameters

Error description display in theTGS3s DASHBOARDS

Fault notification ticket without Internet connection

TecRMI menu modifications

Automatic Troubleshooting translation

Diagnosis

WORLDWIDE Market

TRUCK

BUS & COACH

LIGHT COMMERCIAL VEHICLES

TRAILERS/SEMI-TRAILERS

SMALL UTILITY TRUCKS

NORTH AMERICAN Market

TRUCK

BUS & COACH

LIGHT COMMERCIAL VEHICLES

Wiring diagrams

Dashboard

TecRMI technical data

Coverage

- N-Series 4HK1;
- N-Series 4JJ1;
- N-Series RZ4E.

ISUZU (North America)

New TGS3 dashboards have been developed for the models:

- N Series 5.2 Diesel 4HK1 [2016];
- N Series 3.0 Diesel 4JJ1 [2016];
- N Series 5.2 Diesel 4HK1 [2017], [2018], [2019], [2020], [2021];
- Stripped Chassis 3.0 Diesel 4JJ1 [2016].

ISUZU Engine

• New dashboards have been developed for the SCR/DPF after-treatment system "Bosch Denoxtronic 2.2".

IVECO

New TGS3 dashboards have been developed for the models:

- EuroCargo Euro 6;
- Stralis M.Y. 2013 NP (CNG/LNG);
- Stralis M.Y. 2016 NP (CNG/LNG);
- Stralis Euro 6 M.Y. 2016.
- S-Way / T-Way / X-Way Euro 6 M.Y. 2020.
- S-Way / X-Way M.Y. 2020 NP (CNG/LNG).
- Trakker Euro 6.
- New dashboards with interactive buttons have been developed for the "Wabco ECAS CAN" system.
- New dashboards have been developed for the diesel injection system "Bosch EDC 17 CV 44".
- New dashboards have been developed for the diesel injection system "Bosch EDC 17 CV 41".
- New dashboards have been developed for the diesel injection system "Bosch EDC 16 C 39".
- New dashboards have been developed for the CNG injection system "Marelli IAW 5SF".

KARSAN

• New dashboards have been developed for the diesel injection system "Bosch EDC 17 CV 41".

KAMAZ

- New dashboards have been developed for the model:
- Series 54xx.

KENWORTH

New TGS3 dashboards have been developed for the models:

- Caterpillar;
- Detroit Diesel - Mercedes Benz;
- Paccar.
- New dashboards have been developed for the driver side door system "FAB CDS-4".
- New dashboards have been developed for the diesel injection system "Cummins ECS-DC5 EPA 10".
- New dashboards have been developed for the diesel injection system "Paccar - Cummins ECS-DC6 EPA 13 -> GHG".

KNORR-BREMSE

- New dashboards have been developed for the EBS system "Knorr-Bremse EBS 5".
- New dashboards have been developed for the suspension system "Knorr-Bremse ELC".

MACK

New TGS3 dashboards have been developed for the model:

- Cummins.

MAN

New TGS3 dashboards have been developed for the model:

- TG-X / TG-S / TG-M / TG-L M.Y. 2020.
- New dashboards have been developed for the model:
- TGE.
- New dashboards have been developed for the CNG injection system "Bosch EGC 4".
- New dashboards have been developed for the diesel injection system "Bosch EDC 7 C 32".
- New dashboards have been developed for the diesel injection system "Bosch EDC 17 [---/13>---/19]".
- New dashboards have been developed for the automatic transmission system "ZF Ecolife Man Protocol".

MERCEDES-BENZ

New TGS3 dashboards have been developed for the models:

- Atego Euro 6 (967);
- Actros MPIV.
- New dashboards have been developed for the models:
 - Actros MPV (M.Y. 2019);
 - Arocs MPV;
 - Sprinter IV (907/910) M.Y. 2018;
 - Metris (447);
 - Vito [14>] (447) VAN;
 - V-Klasse [14>] (447).
- New dashboards have been developed for the diesel injection system "MCM Engine management".
- New dashboards have been developed for the CNG injection system "Bosch CNG".
- New dashboards have been developed for the compressed air reservoir system "EAPU Compressed air management".

mitsubishi fuso

New TGS3 dashboards have been developed for the models:

- Canter 4P10 EEV / Euro 6;
- Canter 4P10 Euro 4/5;
- Canter Eco Hybrid 4P10.
- New dashboards have been developed for the diesel injection system "Bosch / Denso Common Rail".

MWM Engine

- New dashboards have been developed for the diesel injection system "Bosch EDC 7 C 1".

NISSAN

New dashboards have been developed for the models:

- NV 300;
- NV 400 [19>].

OPEL

New dashboards have been developed for the model:

- Movano B [19>].

PETERBILT

- New dashboards have been developed for the driver side door system "FAB CDS-4".
- New dashboards have been developed for the diesel injection system "Cummins ECS-DC5 EPA 10".

Software

Generic vehicle search

System search bar

"Most used" sub-family

PRINT button for adjustment and activation DASHBOARDS

Help section for the DASHBOARD parameters

Error description display in theTGS3s DASHBOARDS

Fault notification ticket without Internet connection

TecRMI menu modifications

Automatic Troubleshooting translation

Diagnosis

WORLDWIDE Market

TRUCK

BUS & COACH

LIGHT COMMERCIAL VEHICLES

TRAILERS/SEMI-TRAILERS

SMALL UTILITY TRUCKS

NORTH AMERICAN Market

TRUCK

BUS & COACH

LIGHT COMMERCIAL VEHICLES

Wiring diagrams

Dashboard

TecRMI technical data

Coverage

- New dashboards have been developed for the diesel injection system "Paccar – Cummins ECS-DC6 EPA 13 -> GHG".

PEUGEOT

New dashboards have been developed for the model:

- Jumper [15>] (U9).

RENAULT

New dashboards have been developed for the models:

- Trafic III;
- Master 3 [19>].

RENAULT TRUCK

New TGS3 dashboards have been developed for the models:

- D Series 3,5t-7,5t;
- D Series 7,5t-26t;
- C Series;
- K Series.
- New dashboards have been developed for the rear interface module system "RCIOM Rear Chassis I/O Module".
- New dashboards have been developed for the diesel injection system "EMS Engine Management System".
- New dashboards have been developed for the diesel injection system "EDC UIS/ PDE".

SCANIA

New TGS3 dashboards have been developed for the model:

- R-Series M.Y. 2016 [2016>].
- New dashboards have been developed for the third steering axle system "TSS Tag axle steering system".
- New dashboards have been developed for the diesel injection system "EMS Engine Management System EMD1".
- New dashboards have been developed for the ADAS "DIS Distance sensor DIS1".

TEMSA

- New dashboards have been developed for the diesel injection system "Bosch EDC 17 CV 41".

VOLKSWAGEN

New TGS3 dashboards have been developed for the model:

- Meteor.

New dashboards have been developed for the model:

- Crafter [16>] (SY-SZ);
- Transporter T6 [15>19] (SG-SF).
- New dashboards have been developed for the diesel injection system "Bosch EDC 17 CV 41".

VOLKSWAGEN TRUCK

New TGS3 dashboards have been developed for the models:

- Constellation Cummins;
- Constellation Man;
- Worker.

VOLVO BUS

- New dashboards have been developed for the EBS system "Knorr-Bremse EBS brake command".

VOLVO TRUCK

New TGS3 dashboards have been developed for the models:

- FL (M.Y. 2013);
- VHD;
- FM (M.Y. 2013).
- New dashboards have been developed for the diesel injection system "EMS Engine Management System".
- New dashboards have been developed for the diesel injection system "EDC UIS/ PDE".
- New dashboards have been developed for the rear interface module system "RCIOM Rear Chassis I/O Module".

VOLVO TRUCK (LATAM)

New TGS3 dashboards have been developed for the models:

- VNL Volvo Vehicles with OBD II 16 PIN;
- VNL Volvo Vehicles with OBD II 16 PIN.



WABCO

- New dashboards have been developed for the compressed air reservoir system “Wabco APS Compressed air supply”.

YUCHAI Engine

- New dashboards have been developed for the diesel injection system “Bosch EDC 7 UC 31”.
- New dashboards have been developed for the diesel injection system “Bosch EDC 17”.

ZF

- New dashboards have been developed for the automatic transmission system “ZF TraXon”.
- New dashboards have been developed for the automatic transmission system “ZF Ecomat 2 EST 46/47”.

Software

Generic vehicle search

System search bar

“Most used” sub-family

PRINT button for adjustment and activation DASHBOARDS

Help section for the DASHBOARD parameters

Error description display in theTGS3s DASHBOARDS

Fault notification ticket without Internet connection

TecRMI menu modifications

Automatic Troubleshooting translation

Diagnosis

WORLDWIDE Market

TRUCK

BUS & COACH

LIGHT COMMERCIAL VEHICLES

TRAILERS/SEMI-TRAILERS

SMALL UTILITY TRUCKS

NORTH AMERICAN Market

TRUCK

BUS & COACH

LIGHT COMMERCIAL VEHICLES

Wiring diagrams

Dashboard

TecRMI technical data

Coverage

TecRMI technical data

New TecRMI technical data has been added for the following models:

CITROEN

- Berlingo (M59);
- Jumper [06>15] (U9);
- Jumpy [16>] (K0);
- Jumpy [20>] (K0) EV.

DAIHATSU

- Extol;
- Hi-Jet.

FIAT PROFESSIONAL

- Doblò Cargo (223) [00>05];
- Doblò Cargo (223) [06>09];
- Doblò Cargo (263) [10>15].

FORD

- Fiesta ('02) Courier;
- Transit 2014-2019;
- Transit Connect / Tourneo Connect 2019.

GREAT WALL

- Wingle 6 [14>].

IVECO

- Stralis X-Way Euro 6 M.Y. 2019;
- S-Way / T-Way / X-Way Euro 6 M.Y. 2020.

MAN

- TG-X / TG-S / TG-M / TG-L M.Y. 2020.

MERCEDES-BENZ (LATAM / ASIA PACIFIC)

- Accelo Euro 3;
- Accelo Euro 4 / Euro 5.

MITSUBISHI

- Triton [15>].

NISSAN

- NV 400 [19>].

PEUGEOT

- Expert [20>] (K0) EV.

RENAULT TRUCKS

- Access DXI Euro 4/5.

SUZUKI

- Carry (FD);
- Super Carry (FD) Bus.

TOYOTA

- Proace City Verso [20>];
- Proace Verso [21>] EV.

VOLKSWAGEN

- Caddy [21>] (SB);
- Multivan T6.1 [19>] (SH);
- Transporter T6.1 [19>] (SH-SJ).



IMPORTANT NOTICE FOR CUSTOMERS WHO OWN A PC with Windows 7

Dear customers, Windows 7 is by now an obsolete operating system, no longer supported by Microsoft.

To make the most of all the functions in TEXA's IDC5 diagnostic software, we recommend you update your Personal Computer to the latest version of the operating system Windows 10 and Windows 11.

DIAGNOSTIC LIMITATIONS WARNING

Although TEXA strives to keep its diagnostic tools up to date, it ever more often finds itself having to deal with very complex vehicle electronics that requires tools with advanced technological features.

For this reason we inform you that on some vehicles the Diagnosis or certain specific functions may not be compatible with old generation TEXA tools (VCIs) that have a serial number with "DNTxxxxxxx".

For further information contact your TEXA retailer.

Software

Generic vehicle search

System search bar

"Most used" sub-family

PRINT button for adjustment and activation DASHBOARDS

Help section for the DASHBOARD parameters

Error description display in theTGS3s DASHBOARDS

Fault notification ticket without Internet connection

TecRMI menu modifications

Automatic Troubleshooting translation

Diagnosis

WORLDWIDE Market

TRUCK

BUS & COACH

LIGHT COMMERCIAL VEHICLES

TRAILERS/SEMI-TRAILERS

SMALL UTILITY TRUCKS

NORTH AMERICAN Market

TRUCK

BUS & COACH

LIGHT COMMERCIAL VEHICLES

Wiring diagrams

Dashboard

TecRMI technical data

Coverage

Coverage

EUROPE

TRUCK

AGRALE
 ASTRA
 AUTOCAR
 BEIFANG BENCHI
BMC
 CARMICHAEL
 CATERPILLAR
 CHEVROLET
 DAEWOO AVIA
 DAF
 DAF (LATAM)
 DENNIS EAGLE
 DODGE
 DONGFENG
 E-ONE
 ERF
 FAW
 FODEN
 FORD
 FOTON
 FREIGHTLINER
FRESIA
GAZ
GMC
 HINO
 HYUNDAI
 INTERNATIONAL
 ISUZU
ISUZU (North America)
 IVECO
 IVECO (LATAM)
 IVECO DVD
 JAC
 KAMAZ
KENWORTH
 KRAZ
 MACK
MAN
MAN (LATAM)
 MAZ
 MERCEDES-BENZ
 MERCEDES-BENZ
 (LATAM / ASIA PACIFIC)
MINIBUS
NISSAN
 NISSAN (EUROPEAN MARKET)
 OSHKOSH
 PETERBILT
RENAULT TRUCKS
 RENAULT TRUCKS (LATAM)
 SCANIA
 SCANIA (LATAM)
 SHAANXI
 SHACMAN
 SINOTRUCK
STERLING
 TATA DAEWOO
 TATRA
 TERBERG

UD TRUCKS (NISSAN DIESEL)
VOLKSWAGEN TRUCKS
 VOLVO TRUCKS
 VOLVO TRUCKS (LATAM)
 WESTERN STAR

LIGHT COMMERCIAL VEHICLES

AGRALE
CHEVROLET
CITROEN
 DACIA
DAIHATSU
 DFSK
DODGE
 FIAT
FORD
 GAZ
 GMC
GREAT WALL
 HAFEI
 HYUNDAI
 ISUZU
IVECO
KIA
 LAND ROVER
 LDV
 MAHINDRA
 MAN
MAZDA
 MERCEDES-BENZ
 MERCEDES-BENZ
 (LATAM / ASIA PACIFIC)
MITSUBISHI
NISSAN
 OPEL
PEUGEOT
 PIAGGIO
RENAULT
 SEAT
SKODA
 SOLLERS FIAT
SSANGYONG
 SUZUKI
 TATA
TOYOTA
 VICTORIA GIOTTI
VOLKSWAGEN

BUS

AGRALE
 ALEXANDER DENNIS
 ALLEGRO
 AMZ
 ANKAI
 AUTODROMO
 AUTOSAN

AYATS
 BARBI
 BCI
 BEIFANG BENCHI
BEULAS
 BLUE BIRD
 BMC
 BREDAMENARINI
CACCIAMALI
 CAIO
 CASTROSUA
 COBUS
 COMIL
 CREDO
 CROBUS
 DAEWOO BUS
 DALLA VIA
 DE SIMON
 FAST
 GOLDEN DRAGON
 GULERYUZ
 HEULIEZ BUS
 HIGER
 HINO
 HYUNDAI
 IKARUS
INDCAR
 IRISBUS
IRIZAR - Body + Other Chassis
IRIZAR - Integral
 ISUZU
 IVECO (LATAM)
IVECO BUS
 KAMAZ
KARSAN
 KING LONG
 LEXEA
 LIAZ
 MAN
MARCOPOLO
MASCARELLO
 MAZ (BUS)
 MCI
 MCV
 MERCEDES-BENZ (EOBUS)
MERCEDES-BENZ
(LATAM / ASIA PACIFIC)
 MERKAVIM
 MITSUBISHI FUSO
MODULO
 NEFAZ
NEOPLAN
 NOGE
NEW FLYER
NOGE
 OPTARE
OTOKAR
 PAZ
 RAMPINI
 RENAULT BUS
 SCANIA
 SCANIA (LATAM)

SETRA
SHENLONG
SILEO
SITCAR
SOLARIS (GEN. I-III)
SOLARIS (GEN. IV)
SOLBUS
SOR
SUNSUDEGUI
TAM-EUROPE
(TVM-MARBUS)
TATA HISPANO
TCV
TEMSA
TOYOTA
TOYOTA CAETANO
URSUS
VAN HOOL
VDL BERKHOF
VDL BOVA
VDL BUS & COACH
VDL BUS CHASSIS
VDL JONCKHEERE
VISEON BUS
VOLARE
VOLGABUS
VOLKSWAGEN BUS
VOLVO BUS
VOLZHANIN
WRIGHT BUS
YUTONG

TRAILER AND SEMI-TRAILERS

BENDIX
BPW
CARRIER TRANSICOLD
HALDEX
KNORR - BREMSE
MERITOR - WABCO
SCHMITZ CARGOBULL
THERMO KING
WABASH
WABCO

POWERTRAIN

ALLISON
BENDIX
BOSCH
CATERPILLAR
CUMMINS
DETROIT - MBE
DEUTZ
EATON
EBERSPACHER
FPT
INTERNATIONAL
ISUZU
KNORR - BREMSE
MERCEDES BENZ
MTU
MWM
PACCAR

SCANIA
VM MOTORI
VOITH
WABCO
WEBASTO-SPHEROS
YUCHAI
ZF

SMALL UTILITY TRUCK

AEBI
BONETTI
BREMACH
BSI VEICOLI
BUCHER-SCHÖRLING
CMAR
DULEVO
EFFEDI
FRESIA-METROCAB
HANSA
HOLDER
JOHNSTON
KÄRCHER
LADOG
LINDNER
MATHIEU
MULTICAR
O.ZETA CLES
PIAGGIO
RAVO
REFORM
SCARAB
SCHMIDT

NORTH AMERICA

TRAILER

BENDIX
CARRIER TRANSICOLD
HALDEX
MERITOR - WABCO
THERMO KING
WABASH

LIGHT COMMERCIAL VEHICLE

CHEVROLET
DODGE
FORD
FREIGHTLINER
GMC
MERCEDES-BENZ
NISSAN

AMERICAN MEDIUM DUTY

ALEXANDER DENNIS
ALLEGRO
BLUE BIRD
CATERPILLAR
COBUS
E-ONE
FODEN
FREIGHTLINER
INTERNATIONAL
IVECO
KENWORTH
MACK
MCI
NAVISTAR
NEW FLYER
OSHKOSH
PETERBILT
PREVOST
STERLING
TEMSA
VAN HOOL
VOLVO BUS
VOLVO TRUCKS
WESTERN STAR

POWERTRAIN AND BRAKE SYSTEM

ALLISON
DETROIT - MBE
EATON
ISUZU
MTU
MWM
PACAR
SCANIA
ZF

MEDIUM DUTY

CHEVROLET
FORD
GMC
HINO
INTERNATIONAL
ISUZU (NORTH AMERICA)
KENWORTH
MITSUBISHI FUSO
PETERBILT
STERLING
UD TRUCKS (NISSAN DIESEL)

Software

Generic vehicle search

System search bar

"Most used" sub-family

PRINT button for adjustment and activation DASHBOARDS

Help section for the DASHBOARD parameters

Error description display in theTGS3s DASHBOARDS

Fault notification ticket without Internet connection

TecRMI menu modifications

Automatic Troubleshooting translation

Diagnosis

WORLDWIDE Market

TRUCK

BUS & COACH

LIGHT COMMERCIAL VEHICLES

TRAILERS/SEMI-TRAILERS

SMALL UTILITY TRUCKS

NORTH AMERICAN Market

TRUCK

BUS & COACH

LIGHT COMMERCIAL VEHICLES

Wiring diagrams

Dashboard

TecRMI technical data

Coverage

Brands that offer updates in this version

AVVERTENZA

I marchi e i segni distintivi delle case costruttrici di veicoli presenti in questo documento hanno il solo scopo di informare il lettore sulla potenziale idoneità dei prodotti TEXA qui menzionati ad essere utilizzati per i veicoli delle suddette case. I riferimenti alle marche, modelli e sistemi elettronici contenuti nel presente documento devono intendersi come puramente indicativi, in quanto i prodotti e software TEXA – essendo soggetti a continui sviluppi e aggiornamenti – al momento della lettura del seguente documento, potrebbero non essere in grado di effettuare la Diagnosis di tutti i modelli e sistemi elettronici di ciascuna di tali case costruttrici. Pertanto, prima dell'acquisto, TEXA suggerisce di verificare, sempre, la "Lista Coverage Diagnosis" del prodotto e/o software presso i Rivenditori autorizzati TEXA. **Le immagini e le sagome dei veicoli presenti in questo documento hanno il solo scopo di facilitare l'individuazione della categoria di veicolo (auto, camion, moto ecc.) cui il prodotto e/o software TEXA è dedicato.** Dati, descrizione e illustrazioni possono variare rispetto a quanto descritto nel presente documento. TEXA S.p.A. si riserva il diritto di apportare qualsiasi modifica ai suoi prodotti, senza avviso alcuno.



Bluetooth® è un marchio di proprietà Bluetooth SIG, Inc., U.S.A. con licenza per TEXA S.p.A.
Android is a trademark of Google Inc.



facebook.com/texacom



linkedin.com/company/texa



instagram.com/texacom



youtube.com/texacom

Copyright TEXA S.p.A.

06/2022 - Italiano - V1



TEXA

TEXA S.p.A.

Via 1 Maggio, 9
31050 Monastier di Treviso
Treviso - ITALY
Tel. +39 0422 791311
Fax +39 0422 791300
www.texa.com - info.it@texa.com

COMPANY WITH
QUALITY SYSTEM
CERTIFIED BY DNV
ISO 9001