



IDC5
SOFTWARE
UPDATE

MARINE 16.0.0



IDC5 MARINE 16.0.0

IDC5 MARINE is the practical software that guides the mechanic through all the diagnostic operations in a practical and safe way. It provides important information to support the diagnosis, such as nominal values associated with errors, technical data sheets and interactive wiring diagrams. It allows you to work on many models of inboard and outboard marine engines, industrial engines and generators, personal watercraft, and covers **50 makes** and over **900 models**.

The MARINE 16 update includes several new features for the diagnostic coverage and database, as well as many improvements for the IDC5 software.

MAIN NEW FEATURES INCLUDED IN THE VERSION

- ***New Sheet Search Function***
- ***NEW IDC5 NEWS SECTION***

To learn more about the extraordinary coverage made available by TEXA, visit the website:
www.texa.com/coverage

The following new makes have been added: **JOHN DEERE, JOHN DEERE MARINE, NISSAN MARINE e TOYOTA MARINE.**

The diagnostic coverage has been enhanced and extended for the following makes:

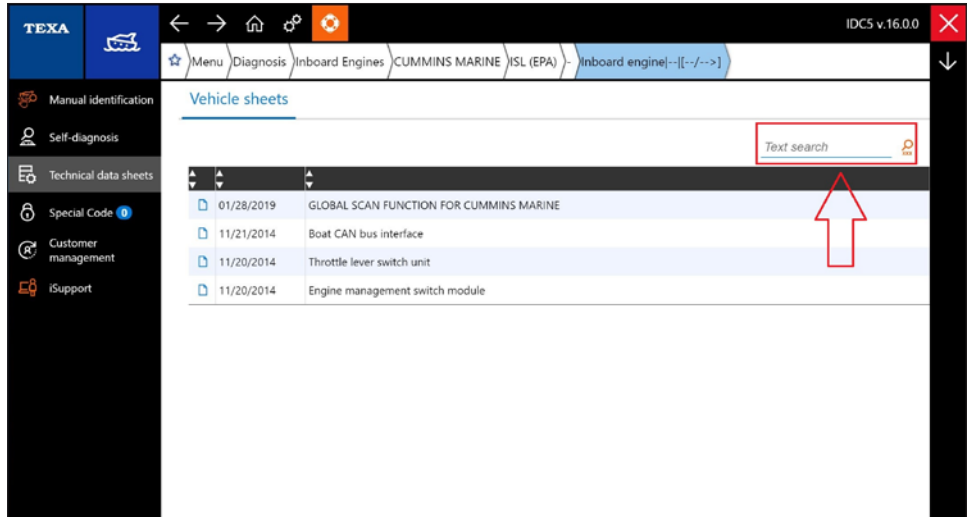
CATERPILLAR, HONDA MARINE, MERCURISER, MERCURY, SEA-DOO (BRP), SELVA MARINE, SUZUKI MARINE, TOHATSU OUTBOARDS, VM MOTORI, VOLVO PENTA, YAMAHA MARINE, YANMAR.

About 50 wiring diagrams have been added for the makes: **CATERPILLAR, YAMAHA MARINE** and **TOYOTA MARINE.**

Software

SHEET SEARCH FUNCTION

The search function has been implemented in the sheet menus to make the tool easier to use. This new function allows searching by keywords or error codes in the selected menu. The software will only display the sheets with the keyword in the title.

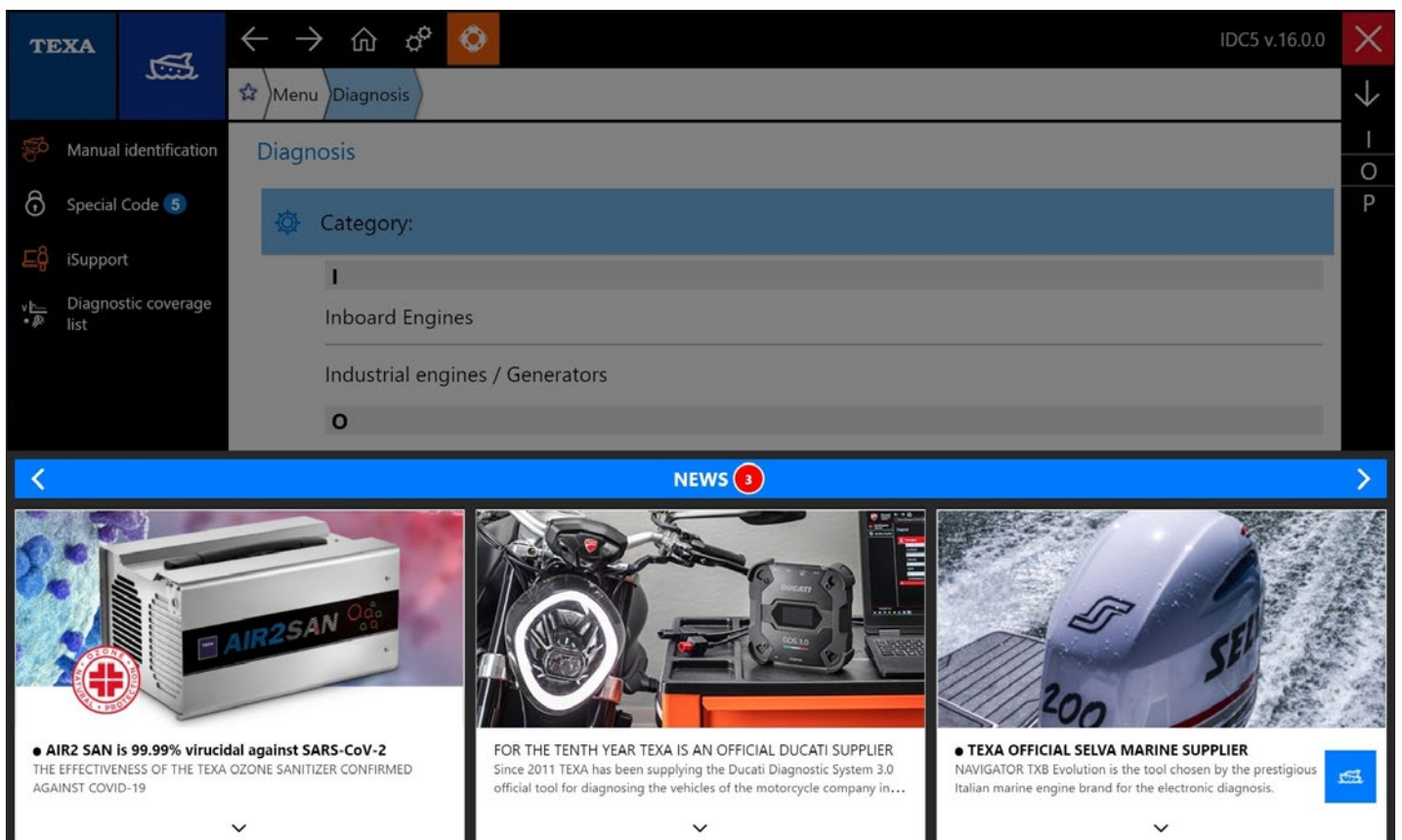


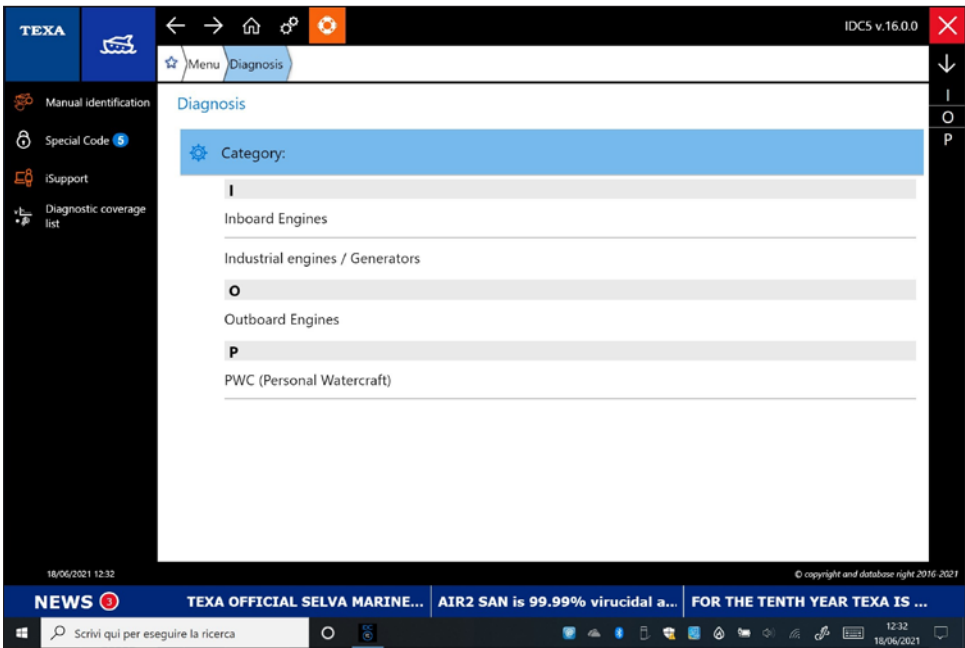
- Software
 - SHEET SEARCH FUNCTION
 - NEW IDC5 NEWS SECTION
- Diagnosis
 - GENERATOR SET CATEGORY
 - JET SKI CATEGORY
 - INBOARD ENGINE CATEGORY
 - OUTBOARD ENGINE CATEGORY
- Coverage

NEW IDC5 NEWS SECTION

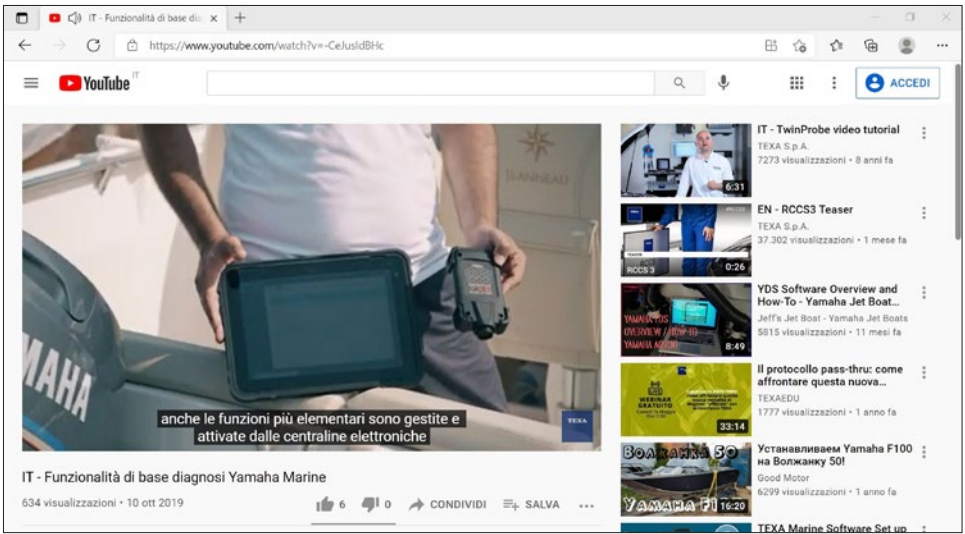
The section of the IDC5 software dedicated to the news has been completely renewed. Many new interesting contents will be shared by TEXA to all its customers, who will be able to learn more and more about the many innovations developed for the world of workshops.

Thanks to the new news section, it will be possible to stay updated on: communications relating to the call center, available training courses, newly launched products, software updates, agreements and collaborations signed by TEXA with manufacturers, participation in trade fairs. But it will also be possible to view documentation in pdf format, see institutional and product videos directly on the diagnostic tool, and much more.





The news can also be recalled and viewed from the IDC5 page of the vehicle selection.



The news may also contain institutional or product videos, such as those present in the official TEXAcom channel on Youtube.

Software

SHEET SEARCH FUNCTION

NEW IDC5 NEWS SECTION

Diagnosis

GENERATOR SET CATEGORY

JET SKI CATEGORY

INBOARD ENGINE CATEGORY

OUTBOARD ENGINE CATEGORY

Coverage

Diagnosis

GENERATOR SET CATEGORY

JOHN DEERE

The injection diagnosis has been added for the following engines: "4045TFM85", "4045AFM85", "6090AFM85", "6068AFM85", "6090SFM85", "6090HFM85" and "6068SFM85".

VOLVO PENTA

The injection diagnosis has been added for the following engine: "D8".

JET SKI CATEGORY

SEA-DOO (BRP)

The complete diagnosis has been added for the following models: "Fish PRO", "GTX Limited" and "Spark Trixx".

It is important to highlight that, other than diagnosis, TEXA also offers additional technical information such as technical sheets, nominal value sheets, technical data and maintenance sheets, bulletins and wiring diagrams. In particular, we wish to underline a significant increase in the technical documentation for the following makes: CATERPILLAR, SELVA MARINE and YAMAHA MARINE.

INBOARD ENGINE CATEGORY

CATERPILLAR

The injection diagnosis has been added for the following engines: "C7.1", "C8.7" and "C12.9".

JOHN DEERE MARINE

The injection diagnosis has been added for the following engines: "4045AFM85", "4045SFM85", "4045TFM85", "6090AFM85", "6068AFM85", "6090SFM85", "6090HFM85" and "6068SFM85".

MERCUISER

The complete diagnosis has been added for the following engines: "4.5L" and "6.2L" The SERVICE function has been added for the following engines: "8.2L HO MPI", "8.2L MAG HO MPI", "8.2L MAG MPI", "8.2L MPI Horizon" and "8.2L MPI MIE".

MERCURY DIESEL

The injection diagnosis has been added for the following engine: "3.0L V6 (POWERED BY FPT)".

MERCURY RACING

The complete diagnosis has been added for the following engines: "700 SCI" and "860".

TOYOTA MARINE

The complete diagnosis has been added for the following engine: "V8".

VM MOTORI

The injection diagnosis has been added for the following engine: "MR706LB".

VOLVO PENTA

The injection diagnosis has been added for the following engines: "D8 EVC", "IPS700 - D8" and "IPS800 - D8".

YANMAR

The idle control and the SERVICE function have been added for the following engines: "4JH110", "4JH45", "4JH57" and "4JH80".

The injection diagnosis and the idle control have been added for the following engines: "4LV150", "4LV170", "4LV195", "4LV230" and "4LV250".

The lever and helm control module diagnosis has been added for the following engines: "8LV-320/320Z", "8LV-350/350Z" and "8LV-370/370Z".

OUTBOARD ENGINE CATEGORY

HONDA MARINE

The injection diagnosis has been added for the following engines: "BF100AK1 (VTEC)", "BF175D", "BF200D", "BF225D (V-TEC)", "BF250D (V-TEC)" and "BF80AK1".

The SERVICE function has been added for the following engines: "BF100A", "BF100AK1 (V-TEC)", "BF115D", "BF135A", "BF150A (V-TEC)", "BF150A4 (VTEC)", "BF150AK0 (V-TEC)", "BF200A", "BF200AK3", "BF225A (V-TEC)", "BF225AK3 (V-TEC)", "BF250A (V-TEC)", "BF40D", "BF50D", "BF60A", "BF75D", "BF90D (V-TEC)", "BF90DK4 (V-TEC)" and "BFP60A".

MERCURY

The diagnostic coverage has been extended to MY18 and later models. The lever and helm control module diagnosis, the thrust vector control module diagnosis, the Joystick diagnosis and the SERVICE function have been added where applicable.

MERCURY RACING

The complete diagnosis has been added for the following engines: "250 R (V8)", "300 R (V8)", "360 APX (V8)", "450 R (V8)" and "Verado 350 SCI (2.6L)".

NISSAN MARINE

The injection diagnosis has been added for the following engines: "NSD 115 A TLDI", "NSD 115 A2 TLDI", "NSD 40 A TLDI", "NSD 40 B TLDI", "NSD 40 B2 TLDI", "NSD 50 A TLDI", "NSD 50 B TLDI", "NSD 50 B2 TLDI", "NSD 70 A2 TLDI", "NSD 70 B TLDI", "NSD 75 C2 TLDI", "NSD 90 A TLDI", "NSD 90 A2 TLDI", "NSD 90 B TLDI" and "NSD 90 C2 TLDI".

SELVA MARINE

The injection diagnosis has been added for the following engines: "AMBERJACK 25 EFI", "BLUE WHALE 250 EFI", "FIN WHALE 225 EFI", "MURENA 40XS EFI", "MURENA 70 EFI" and "SPEARFISH 100 EFI".

The injection diagnosis and the lever diagnosis have been added for the following engines: "BEAKED WHALE 225 EFI", "RIGHT WHALE 250 EFI", "SEI WHALE 200 EFI" and "WHITE WHALE 300 EFI".

SEVEN MARINE

The injection diagnosis has been added for the following engines: "527", "527 S" and "627 SV".

SUZUKI MARINE

The injection diagnosis has been added for the following engines: "DF40A ARI", "DF100B", "DF115B", "DF115SS", "DF140B", "DF150A", "DF150SS", "DF175A" and "DF200SS".

The injection diagnosis and the lever configuration have been added for the following engines: "DF115BG", "DF140BG", "DF150AP", "DF175AP", "DF200AP", "DF250AP", "DF300B", "DF325A" and "DF350A".

TOHATSU OUTBOARDS

The manual SERVICE function has been added for the following engines: "BFT60 4 Stroke", "BFT75 4 Stroke", "BFT90 4 Stroke", "BFW60 4 Stroke", "BFT115 4 Stroke", "BFT150 4 Stroke", "BFT200 4 Stroke", "BFT225 4 Stroke" and "BFT250 4 Stroke".

YAMAHA MARINE

The complete diagnosis has been added for the following engines: "XF375" and "XF425".

The injection diagnosis has been added for the following engines: "F40H", "F50H", "F60F", "FT50J" and "FT60F".

Software

SHEET SEARCH FUNCTION

NEW IDC5 NEWS SECTION

Diagnosis

**GENERATOR SET
CATEGORY**

**JET SKI
CATEGORY**

**INBOARD ENGINE
CATEGORY**

**OUTBOARD ENGINE
CATEGORY**

Coverage

Coverage

JET SKI

HONDA MARINE
KAWASAKI MARINE
SEA-DOO (BRP)
YAMAHA MARINE

INBOARD ENGINE

CATERPILLAR
CFMOTO
CRUSADER ENGINES
CUMMINS MARINE
CUMMINS MERCUISER DIESEL
DAEDONG
DAF MARINE
FNM MARINE
FORD MARINE
FPT (FIAT POWERTRAIN TECHNOLOGIES)
HYUNDAI SEASALL
ILMOR
INDMAR
JOHN DEERE MARINE
KODIAK MARINE
LOMBARDINI MARINE
MAN MARINE
MARINE POWER
MERCUISER
MERCURY DIESEL
MERCURY RACING
MTU
NANNI DIESEL
PANTHER AIRBOATS
PCM MARINE ENGINES
PERKINS
SCANIA MARINE
SEA-DOO (BRP)
SISU
STEYR MOTORS
TOYOTA MARINE
VM MOTORI
VOLKSWAGEN MARINE
VOLVO PENTA
YANMAR

OUTBOARD ENGINE

EVINRUDE
HONDA MARINE
JOHNSON
MARINER
MERCURY
MERCURY RACING
NISSAN MARINE
PARSUN
SELVA MARINE
SEVEN MARINE
SUZUKI MARINE
TOHATSU OUTBOARDS
YAMAHA MARINE

GENERATOR SET

CATERPILLAR
CUMMINS MARINE
JOHN DEERE
KOHLER POWER SYSTEMS
MTU
VOLVO PENTA



IMPORTANT NOTICE FOR CUSTOMERS WHO OWN A PC with Windows 7

Windows 7 is by now an obsolete operating system, no longer supported by Microsoft. To make the most of all the functions in the TEXA IDC5 diagnostic software, we recommend you update your Personal Computer to the latest version of the operating system Windows 10.

DIAGNOSTIC LIMITATIONS WARNING

Although TEXA strives to keep its diagnostic tools up to date, it ever more often finds itself having to deal with very complex modern boat and engine electronics that requires tools with advanced technological features.

For this reason, the diagnosis or some specific functions are not compatible on some engines/boats. The tools that are subject to these limitations are the following:

- Starting from February 2020, the new IDC5 software versions no longer support the AXONE 4 tools with a serial number that starts with DA8.
- Starting from April 2021, for the Navigator TXM tools with a black label (S/Ns that start with "DNA"), the IDC5 software updates will no longer be available. The last version supported by the Navigator TXM tool is the MARINE 15.7.0

In order to make it easier on our customers to switch to a "new generation" TEXA diagnostic tool, that will guarantee top performance in carrying out your daily work within the workshop, TEXA has set up a special scrappage program that will allow you to purchase new diagnostic solutions at an extremely affordable price.

For more information, please contact your trusted TEXA dealer.

Software

SHEET SEARCH FUNCTION

NEW IDC5 NEWS SECTION

Diagnosis

**GENERATOR SET
CATEGORY**

**JET SKI
CATEGORY**

**INBOARD ENGINE
CATEGORY**

**OUTBOARD ENGINE
CATEGORY**

Coverage

WARNING

The trademarks and logos of vehicle manufacturers in this document have been used exclusively for information purposes and are used to clarify the compatibility of TEXA products with the models of vehicles identified by the trademarks and logos. Because TEXA products and software are subject to continuous developments and updates, upon reading this document they may not be able to carry out the DIAGNOSTICS of all the models and electronic systems of each vehicle manufacturer mentioned within this document. References to the makes, models and electronic systems within this document must therefore be considered purely indicative and TEXA recommends to always check the list of the "Systems that can be diagnosed" of the product and/or software at TEXA authorized retailers before any purchase. **The images and the vehicle outlines within this document have been included for the sole purpose of making it easier to identify the vehicle category (car, truck, motorbike, etc.) for which the TEXA product and/or software is intended.** The data, descriptions and illustrations may change compared to those described in this document. TEXA S.p.A. reserves the right to make changes to its products without prior notice.



The Bluetooth® brand is the property of Bluetooth SIG, Inc., U.S.A., and is used by TEXA S.p.A. under license.
Android is a trademark of Google Inc



facebook.com/texacom



linkedin.com/company/texa



instagram.com/texacom



youtube.com/texacom

Copyright TEXA S.p.A.

06/2021 - Inglese - V1



TEXA

TEXA S.p.A.

Via 1 Maggio, 9
31050 Monastier di Treviso
Treviso - ITALY
Tel. +39 0422 791311
Fax +39 0422 791300
www.texa.com - info.it@texa.com

**COMPANY WITH
QUALITY SYSTEM
CERTIFIED BY DNV GL
= ISO 9001 =**