

**IDC5**  
SOFTWARE  
UPDATE

**BIKE 35.0.0**



# IDC5 BIKE 35.0.0

The BIKE 35.0.0 update offers numerous new developments and technical contents that, along with the constant improvements and evolutions of the IDC5 software, guarantee a uniquely complete, top-notch solution to bike repairers worldwide with a diagnostic coverage of 118 makes and over 3700 models.

Significant are the many new features on historic makes such as **AJP, APRILIA, ARIIC, BENELLI, BETAMOTOR, BMW, BRIXTON MOTORCYCLES, BROUGH SUPERIOR, CFMOTO, DUCATI, FANTIC MOTOR, FB MONDIAL, HARLEY- DAVIDSON, HONDA, HUSQVARNA, HYOSUNG, ITALJET, JOHN DEERE, KAWASAKI, KAWASAKI MARINE, KEEWAY, KL, KSR MOTO, KTM, KYMCO, LYNX (BRP), MACBOR, MASH, MH, MITT MOTORCYCLES, MOTO GUZZI, MOTO MORINI, MUTT MOTORCYCLES, MV AGUSTA, NOX, ORCAL, OVERBIKES, PEUGEOT, PIAGGIO, POLARIS, RIEJU, ROSENBAUER, ROYAL ALLOY, ROYAL ENFIELD, SEA-DOO (BRP), SUNRA, SUZUKI, SWM, SYM, TRIUMPH, TRMOTOR, UM MOTORCYCLES, VENT, VESPA, VOGÉ, VOXAN, WOTTAN, YADEA, YAMAHA, YAMAHA MARINE, ZONTES.**

We wish to highlight that the following manufacturers have chosen the IDC5 multi- brand software and TEXA's VCI's as the official tool (OEM) for their authorised service centres: AJP, BENELLI, BETAMOTOR, BIMOTA, BROUGH SUPERIOR, CFMOTO ITALIA, FANTIC MOTOR, ITALJET, KEEWAY ITALIA, KSR MOTO, KYMCO ITALIA, MGK HELLENIC MOTOR, MOTO MORINI, MV AGUSTA, NOX ITALIA, SUNRA ITALIA, SWM, SYM ITALIA, RIEJU, VENT, VERVE MOTO, VOGÉ ITALIA, YADEA. We believe that this is a great advantage also for independent workshops and proof of the product's quality, without forgetting that TEXA is also the OEM supplier of the official DUCATI tool.

Besides the new features just described, the database has also been updated, an added value to the BIKE software. Over 250 new wiring diagrams have been included, along with numerous technical sheets, bulletins, and over 3000 guided diagnosis/nominal value sheets and technical data and maintenance sheets. In particular, for the makes APRILIA, DUCATI, MOTO GUZZI, KAWASAKI, KTM, KYMCO, TRIUMPH, YAMAHA.

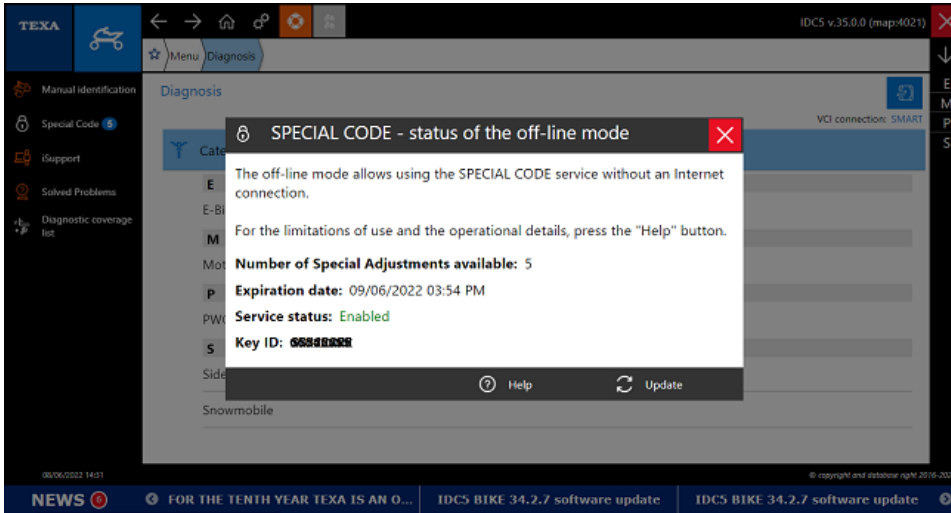
Below only a small part of all the developments introduced with this version is listed, divided by category.

Note: the differences listed in this document refer to the previous BIKE 34.0 MAIN VERSION, therefore they also include the continuous updates BIKE 34.0.1, 34.0.2, 34.0.3, 34.1.0, 34.1.1, 34.1.2, 34.1.3, 34.2.0, 34.2.1, 34.2.2, 34.2.3, 34.2.4, 34.2.5, 34.2.6, 34.2.7 that were released between the BIKE 34.0 and BIKE 35.0 version.

To learn more about the extraordinary coverage made available by TEXA, visit the website:  
**[www.texa.com/coverage](http://www.texa.com/coverage)**

# Software

1. Special Code: starting from the BIKE 35.0 version, connection to the Internet may be required for some particular functions



## Software

New diagnostic cables

## Diagnosis

BIKE  
CATEGORY

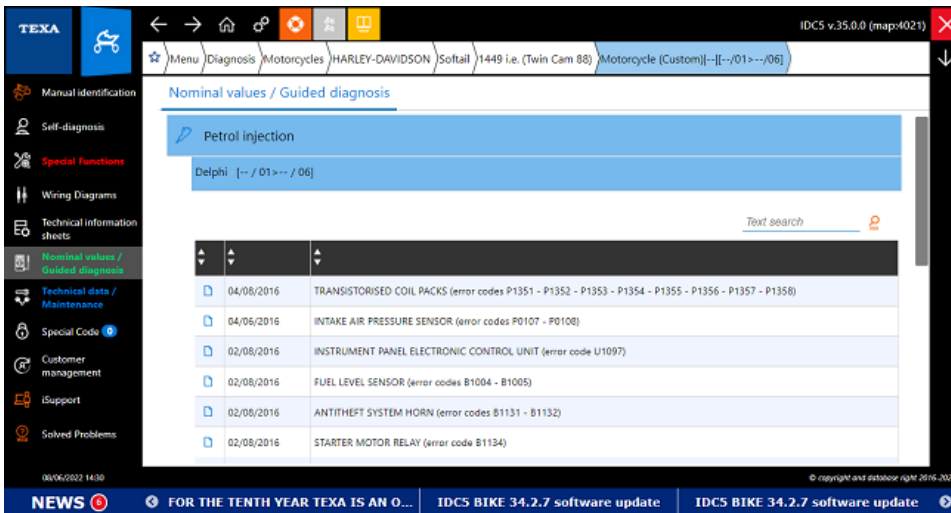
E-BIKE  
CATEGORY

SIDE-BY-SIDE / ATV  
CATEGORY

SNOWMOBILE  
CATEGORY

## Coverage

2. The possibility to search for technical documents has been added



3. The new language **ENGLISH - AMERICAN** has been added

# New diagnostic cables

Starting from the current version, this new cable is available in the BIKE price list:

**3911924:** complete cable for the diagnosis on the cross models of the brand FANTIC MOTOR.



**3151/AP63:** complete cable for the serial diagnosis of the KYMCO ATVs.



**3151/AP64:** terminal cable for the diagnosis on SUNRA electric mobility.

NOTE: the terminal cable must be connected to the main cable AP67.



**3151/AP67:** main cable for electric drive vehicles: the cable is used as base cable to which the terminal cables must be connected.

NOTE: the tool requires external power supply to switch on the diagnostic tool.



**3151/AP68:** terminal cable for the diagnosis on YADEA electric mobility.  
NOTE: the terminal cable must be connected to the main cable AP67.



**E-Bike 01:** terminal cable for the serial diagnosis on the BROSE electric motors.  
NOTE: the terminal cable must be connected to the main cable AP05.



**E-Bike 02:** terminal cable for the serial diagnosis on the BAFANG electric motors.  
NOTE: the terminal cable must be connected to the main cable AP67.



**OBD01:** adapter for diagnosis on the ABS and EPS systems for CFMOTO.



**Software**

New diagnostic cables

**Diagnosis**

BIKE  
CATEGORY

E-BIKE  
CATEGORY

SIDE-BY-SIDE / ATV  
CATEGORY

SNOWMOBILE  
CATEGORY

**Coverage**

# Diagnosis

## BIKE CATEGORY

### **AJP**

The injection diagnosis and reprogramming has been added for the vehicles "PR7", "SPR 250", "SPR 310R", "SPR 510".

### **APRILIA**

The complete diagnosis has been added for the vehicles "RS4 125", "RS660", "RSV4" MY21 EU5, "RSV4 FACTORY" MY21 EU5, "RX 125" MY21 EU5, "SR" for the INDIAN market, "SX 125" MY21 EU5, "SXR" 50 i.e. / 160 i.e. EU5 MY21, "Tuono 125" MY21 EU5, "Tuono 660" EU5 MY21, "Tuono V4" MY21 EU5, "Tuono V4 FACTORY" MY21 EU5.

The injection system diagnosis has been added for the model "Scarabeo 50". The special adjustment "Data buffer reset" has been added where available. ARIIC

The complete diagnosis has been added for the model "318" MY21.

### **BENELLI\*\***

The complete diagnosis has been added for the models "Leoncino 500" MY21 EU5, "Leoncino 500 Trail" MY21 EU5, "TRK 502" MY21 EU5, "TRK 502X" M21 EU5.

### **BETAMOTOR\***

The complete diagnosis has been added for the models "RR 4T" MY20, MY21, MY22.

### **BMW**

The complete diagnosis has been added for the vehicles "F 850 GS (K81)", "F 850 GS Adventure (K82)", "F 900 XR (K84)", "M 1000 RR (K66)", "R 1250 RS (K54 - Liquid Cooled)", "R 18 (K34)", "S 1000 RR (K67)", "S 1000 XR (K69)" and "Special engines A73".

### **BRIXTON MOTORCYCLES**

The complete diagnosis has been added for the vehicles "Cromwell 125" MY19, MY20, MY21, "Cromwell 250" MY19, MY20, MY21, "Crossfire 125 XS" MY20, MY21, "Crossfire 500" MY20, MY21, MY22, "Felsberg 125" MY19, MY20, MY21, "Felsberg 250" MY19, MY20, MY21, "Felsberg XC" MY20, MY21, "Haycroft" MY19, MY20, "Haycroft" MY19, MY20, "Rayburn" MY20, MY21, "Sunray" MY19, MY20, MY21.

The injection system diagnosis has been added for the model "BX 1200" MY22.

### **BROUGH SUPERIOR\***

The complete diagnosis has been added for the model "Lawrence SS1MKL" MY21.

### **CFMOTO\*\***

The complete diagnosis has been added for the models "250 NK", "300 NK", "400 GT", "400 NK", "650 GT", "650 MT", "700 CL-X HERITAGE (CF700-2)".

### **DUCATI**

The coverage has been extended by adding the complete diagnosis for the new vehicles "Diavel 1260 EU4", "Diavel 1260 EU4 Lamborghini", "Diavel 1260 EU5", "Diavel 1260 EU5 Lamborghini", "Multistrada 950 EU4", "Multistrada 950 EU5", "Multistrada 950 S EU4", "Multistrada 950 S EU5", "Multistrada V4", "Multistrada V4 S", "Panigale V4 EU4", "Panigale V4 EU4 Taiwan" MY20, "Panigale V4 EU4 Taiwan" MY21, "Panigale V4 EU5", "Scrambler 1100", "Scrambler 800 EU4", "Scrambler 800 EU5", "Scrambler

Desert Sled EU4", "Scrambler Desert Sled EU5", "Streetfighter V4 EU4" MY20, "Streetfighter V4 EU4" MY21, "Streetfighter V4 EU4 Taiwan" MY20, "Streetfighter V4 EU4 Taiwan" MY21, "Streetfighter V4 EU5" MY21, "Superleggera V4" MY20, "Supersport 950", "XDiavel EU4" MY21, "XDiavel EU5" MY21

The diagnosis in general has been improved and enhanced.

### **FANTIC MOTOR\***

The complete diagnosis has been added for the following vehicles produced from 2021: "XEF 450", "XX 125", "XX 250", "XXF 250", "XXF 450".

### **FB MONDIAL**

The diagnosis has been added for the models "Flat Track 125" MY22 EU5, "HPS 125" MY21 EU5, "Piega" MY22 EU5

### **HONDA**

The diagnosis has been added for the models "NSS350A" MY21 EU5, "PCX125" EU5 MY21.

### **HYOSUNG**

The injection system diagnosis has been added for the vehicles "Aquila GV125S", "Aquila GV300S".

### **ITALJET\***

The injection system diagnosis has been added for the vehicles "Dragster 125", "Dragster 200" MY20.

### **KAWASAKI**

The complete diagnosis has been added for the models "KLX230A/C", "KLX230B/ D", "KLX230E", "KLX300R (KLX300C)", "KX252A", "KX252B/C/D", "KX450K", "Ninja 1000 (ZX1000W)", "Ninja 1000 SX (ZX1002K)", "Ninja 250 (EX250W)", "Ninja 300 (EX300C)", "Ninja 650 (EX650L)", "Ninja 650 (EX650M/N)", "Ninja H2 (ZX1000Y)", "Versys (KLE650F)", "Versys-X (KLE300D/E)", "Vulcan S (EN650J)", "W800 (EJ800D)", "Z H2 (ZR1000K)", "Z1000 R (ZR1000M/N)", "Z1000 SX (ZX1000W)", "Z650 (ER650K/L)", "Z900 (ZR900F/H)".

### **KEEWAY\*\***

The injection system diagnosis has been added for the vehicles "K-LIGHT 125", "RKF 125", "Vieste 125".

### **KL**

The injection system diagnosis has been added for the vehicles "Brera 125".

The complete diagnosis has been added for the models "Brera 300".

### **KSR MOTO\***

The injection system diagnosis has been added for the vehicles "TR 125".

### **KYMCO\*\***

The coverage has been extended by adding the complete diagnosis for the new vehicles "Agility 125 Carry", "Agility 125 R16 Plus", "Agility 200 R16 Plus", "Agility 300 R16 Plus", "Agility 50 R16 Plus", "Agility Carry 50", "AK550", "AK550 35 kW", "Downtown 125", "Downtown 350", "DTX 360", "Like 125", "Like 125 Sport", "Like 150", "Like 50", "People GTI 125", "People ONE

## Software

New diagnostic cables

## Diagnosis

BIKE  
CATEGORY

E-BIKE  
CATEGORY

SIDE-BY-SIDE / ATV  
CATEGORY

SNOWMOBILE  
CATEGORY

## Coverage

125", "People ONE 150", "People S 125", "People S 150", "People S 200", "People S 300", "People S 50", "Super 850", "Visar 125", "Xciting 400S", "X-Town 125", "X-Town 125 City", "X-Town 300", "X-Town 300 City".

### **MACBOR**

The complete diagnosis has been added for the models "Eight Mile 500". The injection system diagnosis has been added for the vehicles "Eight Mile 125", "Fun 125", "Fun 125 Plus", "Lord Martin", "Montana XR5".

### **MASH**

The coverage has been extended by adding the complete diagnosis for the new vehicles "Adventure 400", "Black Seven", "Cafe Racer", "City", "Dirt Track 250", "Dirt Track 650", "Force Army 400", "Force Desert 400", "Scrambler 125", "Scrambler 400", "Seventy 125", "Seventy Five 125", "Sixty 125 4T", "TT 40 Cafe Racer", "Two Fifty", "X Ride 650".

### **MH**

The complete diagnosis has been added for the models "Bogga", "Bogga Rocker", "Fasty 125", "NKR 125", "Revenge Bravo Edition", "Revenge Classic", "RYX 125" MY19, MY20, MY21, "Vince 125" MY19, MY20, MY21, "WYN 125".

### **MITT MOTORCYCLES**

The complete diagnosis has been added for the models "125 DC SCRAMBLER", "125 GP", "125 GP LIMITED", "125 GP2", "125 GTS", "125 MB CUSTOM", "125 PK", "125 PK MAX", "125 RT SUPER", "125 SC SCRAMBLER", "125 TK ADVENTURE", "125 XRS", "330 GTS", "400 GPR", "440 MB CUSTOM", "50 RT SUPER".

### **MOTO GUZZI**

The complete diagnosis has been added for the models "V7 SPECIAL" MY21 EU5, "V7 STONE" MY21 EU5, "V85" MY21 EU5, "V9 Bobber" MY21 EU5, "V9 Roamer" MY21 EU5.

### **MOTO MORINI\***

The ABS system diagnosis, injection diagnosis and reprogramming have been added for the model "X-Cape" MY 21.

### **MUTT MOTORCYCLES**

The complete diagnosis has been added for the models "AKITA 125", "AKITA 250", "FAT SABBATH 125", "FAT SABBATH 250", "FSR 125", "FSR 250", "GT-SS 125", "GT-SS 250", "HILTS 125", "HILTS 250", "MASTIFF 125", "MASTIFF 250", "MONGREL 125", "MONGREL 250", "RAZORBACK 125", "RS-13 125", "RS-13 250", "S-54 125", "SUPER 4 125", "SUPER 4 250", "SUPER 6 125".

### **MV AGUSTA\***

The coverage has been extended by adding the complete diagnosis for the new vehicles "Brutale 1000 ORO", "Brutale 1000 RR", "Brutale 1000 RR" MY21, "Brutale 1000 RR Nurburgring" MY21, "Brutale 1000 RS" MY21, "Brutale 800 Dragster" MY21, "Brutale 800 Dragster RC SCS" MY21, "Brutale 800 Dragster Rosso" MY21, "Brutale 800 Dragster RR" MY21, "Brutale 800 Dragster RR SCS" MY21, "Brutale 800 Rosso" MY21, "Brutale 800 RR" MY21, "Brutale 800 RR SCS" MY21, "F3 800" MY21, "F3 800 RC" MY21, "F3 800 RR" MY21, "Rush 1000" MY21, "Superveloce 800" MY21, "Superveloce 800 Ago" MY21, "Superveloce 800 Alpine" MY21, "Superveloce 800 S" MY21, "Turismo Veloce 800 Lusso" MY21, "Turismo Veloce 800 Lusso SCS" MY21, "Turismo Veloce 800 RC SCS" MY21, "Turismo Veloce 800 Rosso" MY21.

### **NOX\*\***

The injection system diagnosis has been added for the model "Versilia 125".

### **ORCAL**

The complete diagnosis has been added for the model "SK01".



## OVERBIKES

The complete diagnosis has been added for the models "Brera 125", "Brera 300", "B-Tre 125".

## PEUGEOT

The complete diagnosis has been added for the models "Django", "Tweet", "Tweet Double Black", "Tweet Paris", "Tweet RS".

## PIAGGIO

The complete diagnosis has been added for the models "Beverly 300" MY21 EU5, "Beverly 400" MY21 EU5, "Liberty" MY21 EU5, "Liberty Delivery 50" MY21 EU5, "Liberty Delivery 125" MY21 EU5, "Medley 125" e "Medley 150" MY21 EU5, "MP3 400" MY21 EU5, "MP3 500 Sport Advanced" MY21 EU5, "Mymoover" MY21 EU5, "ZIP" MY21 EU5.

## ROYAL ENFIELD

The complete diagnosis has been added for the model "Meteor 350" MY21 EU5.

## SUNRA\*\*

The diagnosis of the BMS system has been added for the model "ROBO S".

## SUZUKI

The injection system diagnosis has been added for the models "Burgman UB 125" MY21 EU5, "DL 1050 V-Strom XT", "DL 1050A V-Strom". The complete diagnosis has been added for the models "DL 650A V-Strom", "DL 650A V-Strom XT", "GSX 150", "GSX 250".

## SWM\*

The injection system diagnosis has been added for the models "Ace of Spades", "Outlaw", "RS125R", "RS300R", "RS500R", "Six Days 500", "SM125R", "SM500R".

## SYM\*\*

The injection system diagnosis has been added for the models "Crox 50 Euro 5" MY21 EU5, "Fiddle 50 Euro 5 (XG05W1)" MY21 EU5, "Jet 14 125 Euro 5 (Liquid Cooled - XC12WXEU)" MY21 EU5, "Jet X 125 Euro 5 (Liquid Cooled - XH12WWEU)" MY21 EU5, "Joyride 125 Euro 5 (LF12W4EU)" MY21 EU5, "NH-T Euro 5 (MG12B2EU)" MY21 EU5, "NH-X Euro 5 (ME12B2EU)" MY21 EU5, "Symphony 125 Cargo Euro 5 (AY12WAEU)" MY21 EU5, "Symphony 200 Euro 5 (XF20W1IT)" MY21 EU5, "Symphony 50 Euro 5 (XF05W1IT)" MY21 EU5, "Symphony ST 125 Euro 5 (XL12WWIT)" MY21 EU5, "Symphony ST 50 Euro 5 (XL05W1IT)" MY21 EU5.

The complete diagnosis has been added for the models "Cruisym 300 Euro 5 (LV30W2EU)" MY21 EU5, "HD 300 Euro 5 (LS30W3EU)" MY21 EU5, "Joyride S 200 Euro 5 (LF18W3EU)" MY21 EU5, "Symphony ST 200 Euro 5 (XL20W1IT)" MY21 EU5.

## TRIUMPH

The complete diagnosis has been added for the models "Daytona Moto2™ 765", "Rocket 3", "Rocket 3 GT", "Rocket 3 R", "Scrambler 1200 XC", "Scrambler 1200 XE", "Tiger Sport", "Trident 660".

## TRMOTOR

The injection system diagnosis has been added for the models "GP1".

## Software

New diagnostic cables

## Diagnosis

BIKE  
CATEGORY

E-BIKE  
CATEGORY

SIDE-BY-SIDE / ATV  
CATEGORY

SNOWMOBILE  
CATEGORY

## Coverage

**UM MOTORCYCLES**

The complete diagnosis has been added for the models "Dsr 125 Adventure TT", "Dsr 125 Ex Enduro", "Dsr 125 Super Motard", "Renegade Scrambler".

**VENT\***

The complete diagnosis has been added for the models "Baja 125 4T" MY22 EU5, "Baja RR 125 4T" MY22 EU5, "Derapage 125 4T" MY22 EU5, "Derapage RR 125 4T" MY22 EU5.

**VESPA**

The complete diagnosis has been added for the models "Vespa 946 125" MY21 EU5, "Vespa 946 150" MY21 EU5, "Vespa GTS" MY21 EU5, "Vespa GTS SUPERTECH" MY21 EU5, "Vespa Elettrica" MY21 EU5.

**VOGE**

The complete diagnosis has been added for the models "Brivido 300R", "Brivido 500R", "ER10", "Trofeo 300AC", "Trofeo 300ACX Scrambler", "Valico 300DS", "Valico 500DS", "Valico 500DSX", "Valico 650DS", "Valico 650DSX".

**WOTTAN**

The injection system diagnosis has been added for the models "GP1", "Storm 125".

**YADEA\*\***

The diagnosis of the BMS system has been added for the model "C1S PRO", "G5S", "Y1S".

**YAMAHA**

The complete diagnosis has been added for the models "Aerox" MY21 EU5, "Aerox S" MY21 EU5, "D'elight" MY21 EU5, "Exciter" MY21 EU5, "FZ-S V3" MY21 EU5, "MT-07" MY21 EU5, "MT-09" MY21 EU5, "MT-125" MY21 EU5, "N-MAX 125" MY21 EU5, "N-MAX 150" MY21 EU5, "T155 Sniper" MY21 EU5, "Tracer 7" MY21 EU5, "Tracer 7" MY21 EU5, "Tracer 9" MY21 EU5, "Tracer 9 GT" MY21 EU5, "Tricity" MY21 EU5, "X-MAX 125" MY21 EU5, "X-MAX 300" MY21 EU5, "XP 560 T-Max" MY21 EU5, "XSR 700" MY21 EU5, "YZF R125" MY21 EU5, "YZF R15 V3" MY21 EU5.

**ZONTES**

The injection system diagnosis has been added for the models "310 M", "310 R", "310 T", "310 T1", "310 T2", "310 V", "310 X", "Z2-125", "ZT 125 U", "ZT 125 U1", "ZT125-G1".

**E-BIKE CATEGORY****FANTIC MOTORS\***

The complete diagnosis has been added for electric bikes equipped with "BAFANG" and "BROSE" motors.

**SIDE-BY-SIDE / ATV CATEGORY****CFMOTO\*\***

The complete diagnosis has been added for the models "CFORCE (CF1000ATR)", "CFORCE (CF1000AU)", "C-Force (CF1000AU-F)", "CFORCE 400", "CFORCE 500", "C-Force 520", "C-Force 550", "CFORCE 600", "Terralander (CF800-EX)", "UFORCE (CF1000UTR-3)", "UFORCE (CF1000UU)", "UFORCE (CF500UTR-2)", "UFORCE (CF800-3)", "UFORCE (CF800UTR-2)", "UFORCE (CF800UU-A)", "ZFORCE (CF1000US)", "ZFORCE (CF1000US-2)", "ZFORCE (CF1000US-A)", "ZFORCE (CF1000UTR-2)", "ZFORCE (CF500UTR)", "ZFORCE (CF800)".

## JOHN DEERE

The injection diagnosis has been added for the models "Gator XUV835M", "Gator XUV855M", "Gator XUV865M", "Gator XUV865R".

## KAWASAKI

The injection diagnosis has been added for the models "Brute Force 750 4x4i (KVF750G/H/J/L)", "Mule PRO-FXR (KAF820K)", "Teryx 4 750 (KRT750A/B/C/D)", "Teryx KRX 1000".

## KYMCO\*\*

The injection diagnosis has been added for the models "Maxxer 450", "Mxu 450", "Mxu 700", "Uxv 700".

## POLARIS

The SERVICE function has been added for the models "Sportsman 450", "Sportsman 450 H.O.", "Sportsman 450 H.O. 2x4", "Sportsman 450 H.O. MD", "Sportsman 450 H.O. Quad", "Sportsman 450 H.O. Tractor", "Sportsman 450 H.O. ZUG", "Sportsman 500 ACE", "Sportsman 570 6x6", "Sportsman 570 6x6 Tractor", "Sportsman 570 HD", "Sportsman 570 MD SP", "Sportsman 570 MD Touring", "Sportsman 570 MD UTE", "Sportsman 570 Quad", "Sportsman 570 Quad SP", "Sportsman 570 Quad Touring", "Sportsman 570 Quad UTE", "Sportsman 570 Tractor Touring", "Sportsman 570 Tractor UTE", "Sportsman 570 Tractor X2", "Sportsman 570 X2 MD", "Sportsman 570 ZUG", "Sportsman 570 ZUG Machine", "Sportsman 850 High Lifter", "Sportsman 850 Touring SP".

## YAMAHA

The injection diagnosis has been added for the models "Grizzly 700", "MX775V-EFI", "MX800V-EFI", "MX825V-EFI", "Raptor 700", "YFZ 450.

## SNOW MOBILE CATEGORY

### LYNX (BRP)

The complete diagnosis has been added for the model "Xterrain".

## Software

New diagnostic cables

## Diagnosis

BIKE  
CATEGORY

E-BIKE  
CATEGORY

SIDE-BY-SIDE / ATV  
CATEGORY

SNOWMOBILE  
CATEGORY

## Coverage

\* Official diagnosis chosen by the manufacturer (O.E.M.).

\*\* Official diagnosis chosen by the manufacturer (O.E.M.) for the ITALIAN market.

# Coverage

## BIKE

**AJP**  
**APRILIA**  
 BAJAJ  
**BENELLI**  
 BENELLI (DSK)  
**BETAMOTOR**  
 BIMOTA  
**BMW**  
 BOOM TRIKE  
**BRIXTON MOTORCYCLES**  
**BROUGH SUPERIOR**  
 BUELL  
 CAGIVA  
 CAN-AM (BRP)  
**CFMOTO**  
 CSC MOTORCYCLES  
 DAELIM MOTOR  
 DAFRA  
 DERBI  
**DUCATI**  
**FANTIC MOTOR**  
**FB MONDIAL**  
 GAS GAS  
 GENERIC  
 GEON  
 GG TECHNIK  
 GILERA  
**HARLEY-DAVIDSON**  
 HISUN  
 HM  
**HONDA**  
 HONDA MONTESA  
 HUSABERG  
**HUSQVARNA**  
**HYOSUNG**  
 INDIAN  
**ITALJET**  
 KASINSKI  
**KAWASAKI**  
**KEEWAY**  
 KELLER  
**KL**  
**KSR MOTO**  
**KTM**  
**KYMCO**  
 LAVERDA  
**MACBOR**  
 MALAGUTI  
**MASH**  
 MGK HELLENIC MOTOR  
**MH**  
 MINSK  
**MITT MOTORCYCLES**  
 MONDIAL  
**MOTO GUZZI**  
**MOTO MORINI**  
**MUTT MOTORCYCLES**  
 MV AGUSTA  
**NOX**  
**ORCAL**

## OVERBIKES

**PEUGEOT**  
 POLARIS  
**ROYAL ALLOY**  
**ROYAL ENFIELD**  
 SHERCO  
 SHINERAY  
 SINNIS  
 STELS  
 SUZUKI  
**SWM**  
**SYM**  
**TRIUMPH**  
**TRMOTOR**  
**UM MOTORCYCLES**  
 URAL  
 VERVE MOTO  
 VICTORY  
**VOXAN**  
**YAMAHA**  
 ZONGSHEN  
**ZONTES**

## SCOOTER

ADIVA  
 AEON  
 APRILIA  
 BENELLI  
 BMW  
**CFMOTO**  
 DAELIM MOTOR  
 DAFRA  
 DERBI  
 GILERA  
 GOES  
 HONDA  
 HYOSUNG  
 KAWASAKI  
 KEEWAY  
**KYMCO**  
 LAMBRETTA  
 MALAGUTI  
 MBK  
**PEUGEOT**  
**PIAGGIO**  
 QOODER  
 QUADRO  
 RIYA  
 SINNIS  
**SUZUKI**  
 SYM  
 TGB  
**VESPA**  
**WOTTAN**  
 YAMAHA

## SIDE-BY-SIDE / ATV

ARCTIC CAT  
 CAN-AM (BRP)  
**CFMOTO**  
 COLEMAN  
 GAS GAS  
 GG TECHNIK  
 HISUN  
 HONDA  
**KAWASAKI**  
 KVN MOTORS  
**KYMCO**  
**POLARIS**  
 POLARIS DEFENCE  
 STELS  
 SUZUKI  
 TGB  
**YAMAHA**

## JET SKI

HONDA MARINE  
**KAWASAKI MARINE**  
**SEA-DOO (BRP)**  
**YAMAHA MARINE**

## SNOWMOBILE

ARCTIC CAT  
**LYNX (BRP)**  
 POLARIS  
 SKI-DOO (BRP)  
 STELS  
 YAMAHA

## UTILITY

### VEHICLE

ARCTIC CAT  
 CAN-AM (BRP)  
**CFMOTO**  
 COLEMAN  
 GEM  
 HISUN  
 HONDA  
**JOHN DEERE**  
 PIAGGIO VEICOLI COMMERCIALI  
**POLARIS**  
 POLARIS DEFENCE  
 POLARIS RANGER  
 QUADIX  
**ROSENBAUER**  
 YAMAHA

**PUMPS**  
ROSENBAUER

**MINICARS**  
GRECAV

**ENGINE**  
BMW  
ROTAX (BRP)

**E-BIKE**  
FANTIC MOTOR

**Software**

New diagnostic cables

**Diagnosis**

BIKE  
CATEGORY

E-BIKE  
CATEGORY

SIDE-BY-SIDE / ATV  
CATEGORY

SNOWMOBILE  
CATEGORY

**Coverage**

**IMPORTANT NOTICE for the owners of a PC with Windows 7**

Dear customers, Windows 7 is by now an obsolete operating system, no longer supported by Microsoft. To make the most of all the functions in TEXA's IDC5 diagnostic software, we recommend you update your Personal Computer to the latest version of the operating system Windows 10.

**DIAGNOSTIC LIMITATIONS WARNING**

Although TEXA strives to keep its diagnostic tools up to date, it ever more often finds itself having to deal with very complex modern vehicle electronics that requires tools with advanced technological features.

For this reason, the diagnosis or some specific functions are not compatible on some vehicles. The tools that are subject to these limitations are the following:

- NAVIGATOR TXB with a black or PGDS label (S/Ns that start with "DNX" or "W").
- Navigator TXM with a black label (S/Ns that start with "DNA").
- NAVIGATOR TXT with a black label (S/Ns that start with "DNT" or "W").

In order to make it easier on our customers to switch to a "new generation" TEXA diagnostic tool, that will guarantee top performance in carrying out your daily work within the workshop, TEXA has set up a special scrappage program that will allow you to purchase new diagnostic solutions at an extremely affordable price.

N.B.: The diagnosis on the makes BENELLI, BENELLI (DSK), BIMOTA and on the models APRILIA MXV, RXV, SXV and the Racing reprogramming function for the SUZUKI, CAGIVA and KAWASAKI vehicles are not available with the Navigator NANO S interface.

**For further information contact your official TEXA distributor.**

## WARNING

The trademarks and logos of vehicle manufacturers in this document have been used exclusively for information purposes and are used to clarify the compatibility of TEXA products with the models of vehicles identified by the trademarks and logos. Because TEXA products and software are subject to continuous developments and updates, upon reading this document they may not be able to carry out the DIAGNOSTICS of all the models and electronic systems of each vehicle manufacturer mentioned within this document. References to the makes, models and electronic systems within this document must therefore be considered purely indicative and TEXA recommends to always check the list of the "Systems that can be diagnosed" of the product and/or software at TEXA authorised retailers before any purchase. **The images and the vehicle outlines within this document have been included for the sole purpose of making it easier to identify the vehicle category (car, truck, motorbike, etc.) for which the TEXA product and/or software is intended.** The data, descriptions and illustrations may change compared to those described in this document. TEXA S.p.A. reserves the right to make changes to its products without prior notice.



The Bluetooth® brand is the property of Bluetooth SIG, Inc., U.S.A., and is used by TEXA S.p.A. under license.  
Android is a trademark of Google Inc



[facebook.com/texacom](https://facebook.com/texacom)



[linkedin.com/company/texa](https://linkedin.com/company/texa)



[instagram.com/texacom](https://instagram.com/texacom)



[youtube.com/texacom](https://youtube.com/texacom)

Copyright TEXA S.p.A.

06/2022 - Inglese



**TEXA**

### TEXA S.p.A.

Via 1 Maggio, 9  
31050 Monastier di Treviso  
Treviso - ITALY  
Tel. +39 0422 791311  
Fax +39 0422 791300  
[www.texa.com](http://www.texa.com) - [info.it@texa.com](mailto:info.it@texa.com)

COMPANY WITH  
QUALITY SYSTEM  
CERTIFIED BY DNV  
ISO 9001