



**IDC5**  
SOFTWARE  
UPDATE

**CAR 76.0.0**



March 2023

# IDC5 CAR 76.0.0

The **IDC5 CAR 76.0.0** software update includes, once again, a large number of developments, the best of TEXA's multi-brand diagnosis dedicated to cars and light commercial vehicles. Using IDC5 CAR during your daily workshop activities means having an avant-garde solution, rich in new diagnostic possibilities, special functions and technical information that are essential for completing even the most complex workshop operations professionally and with full customer satisfaction.

IDC5 CAR 76.0.0 includes the update of as many as 55 makes. The work of TEXA's technical developers also led to further increasing the coverage of the ADAS, electric and hybrid vehicles, interactive "DASHBOARD" screens and wiring diagrams.

IDC5 CAR 76.0.0 is characterised by over 4000 new possible selections for the major makes on the market worldwide, among which: **ABARTH, ACURA, ALFA ROMEO, ASTON MARTIN, AUDI, BENTLEY, BMW, BUICK, CADILLAC, CHERY, CHEVROLET, CHRYSLER, CITROËN, CUPRA, DACIA, DAIHATSU, DATSUN, DODGE, DR, DS, EVO, FERRARI, FIAT, FISKER, FORD, GENESIS, GMC, HOLDEN, HONDA, HUMMER, HYUNDAI, INFINITI, ISUZU, JAGUAR, JEEP, KIA, LADA, LANCIA, LAND ROVER, LAMBORGHINI, LANCIA, LAND ROVER, LDV, LEXUS, LINCOLN, LYNK & CO, MAXUS, MAYBACH, MASERATI, MAZDA, MCLAREN, MERCEDES-BENZ, MERCURY FORD, MG, MINI, MITSUBISHI, NISSAN, OPEL, PEUGEOT, POLESTAR, PONTIAC, PORSCHE, RAVON, RENAULT, RENAULT SAMSUNG, ROEWE, ROLLS-ROYCE, SAAB, SATURN, SCION, SEAT, SKODA, SMART, SSANGYONG, SUBARU, SUZUKI, TATA, TESLA, TOYOTA, TROLLER, UAZ, VENUZIA, VOLKSWAGEN, VOLVO.**

To learn more about the extraordinary coverage made available by TEXA, visit the website:

**[www.texa.com/coverage](http://www.texa.com/coverage)**

## NEW FEATURES INCLUDED IN THE IDC5 CAR 76.0.0 VERSION

**SCAN VIN 2.0**

**UNLOCK OF THE PROTECTED CONTROL UNITS  
ON VOLKSWAGEN GROUP VEHICLES**

**MILEAGE AND VIN CHECK**

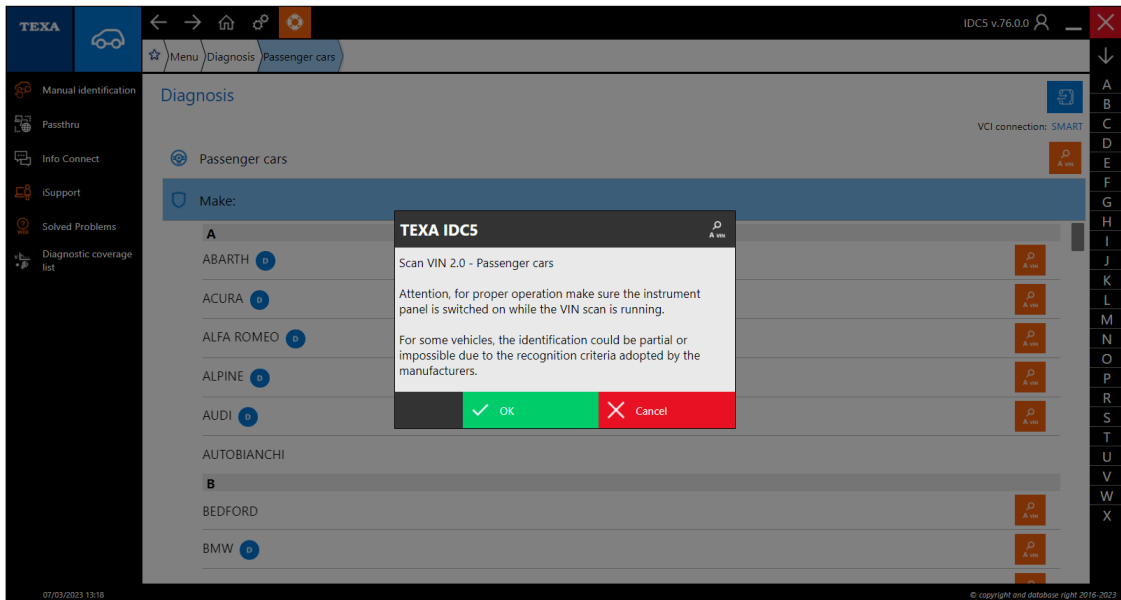
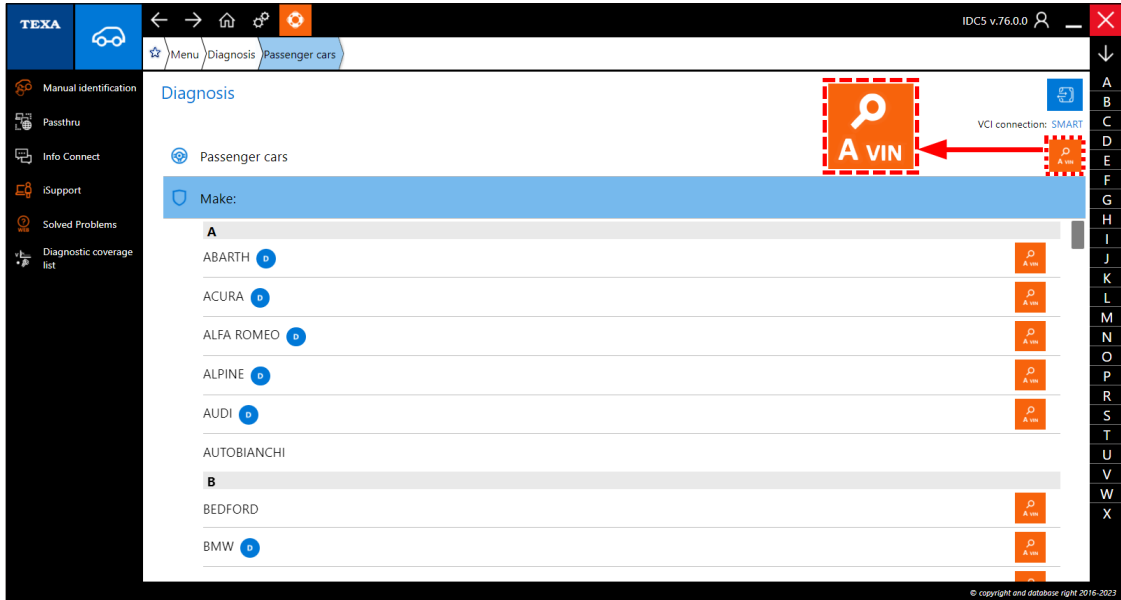
**TESLA DIAGNOSIS**

**IVECO DAILY DIAGNOSIS**

**DIAGNOSIS**

## SCAN VIN 2.0

The IDC5 CAR 76.0.0 software update includes the function for scanning the VIN (Vehicle Identification Number) without having to select the specific make.



## UNLOCK OF THE PROTECTED CONTROL UNITS ON VOLKSWAGEN GROUP VEHICLES

Today an increasing number of vehicles is equipped with one or more protected control units that manufacturers have introduced for cyber security reasons. Among these there are also the most recent vehicles by the Volkswagen group.

Thanks to TEXA, starting from the IDC5 CAR 76.0.0 update, it will be possible to complete diagnostic operations on protected control units.

To activate the software function you must have an active TEXPACK CAR service subscription and create a personal account through the myTEXA portal.

It is a simple and intuitive guided procedure that requires registering and validating your identity through the ID Proofing and MFA (Multi-Factor Authentication).

The latter is a multi-factor authentication that requires entering at least two verification factors in order to access the protected functions.

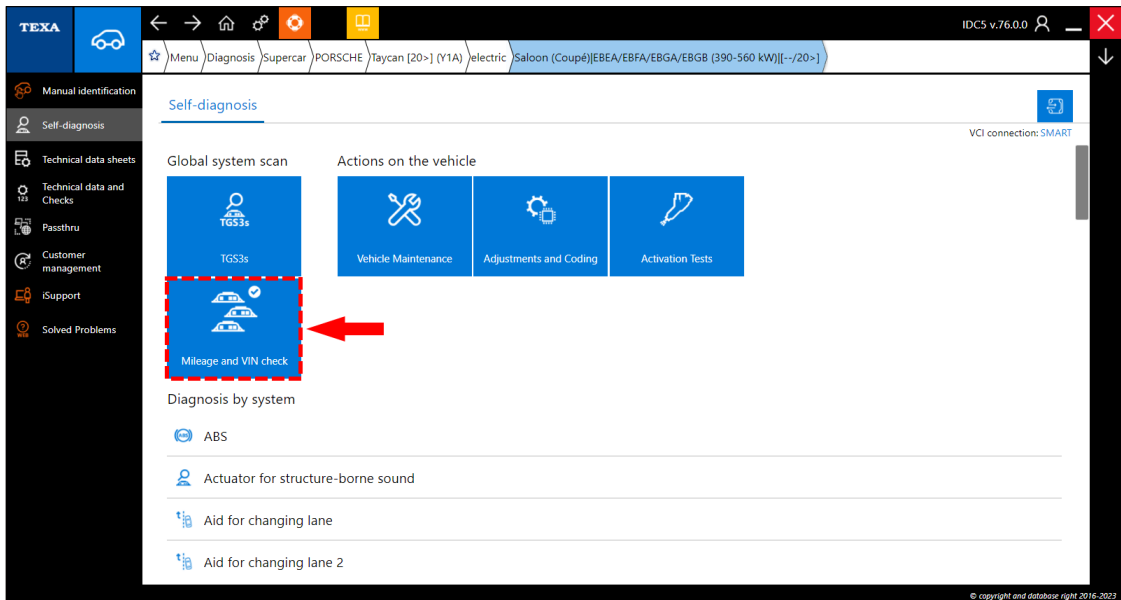
**NOTE: For further details on the registration procedure, contact your TEXA distributor who will provide all the supporting information material.**

## MILEAGE AND VIN CHECK

The IDC5 CAR 76.0.0 software update includes the "Mileage and VIN check" function that replaces the previous "TGS3s Odometer" function.

This function allows users to launch the reading of the mileage and/or VIN (Vehicle Identification Number) values stored in the single vehicle control units.

**NOTE: Access to the "Mileage and VIN check" function is reserved to the users that have an active TEXPACK CAR.**





- BODY COMPUTER (Rear junction box electronics)
- BODY COMPUTER (Junction box electronics)
- DISTANCE CONTROL
- PARKING BRAKE
- BATTERY CONTROL MODULE
- BATTERY CHARGER CONTROL MODULE
- DRIVER SIDE AND PASSENGER SIDE DOOR
- DRIVER SIDE AND PASSENGER SIDE REAR DOOR
- CHARGING SOCKET
- TYRE PRESSURE
- INSTRUMENTATION
- FRONT CAMERA

## **IVECO DAILY DIAGNOSIS**

The new 8-pin adapter cable 3914374 has been developed for the model IVECO Daily 19.

This adapter cable allows performing advanced diagnostic procedures such as component activations or settings/calibrations



**DIAGNOSIS**

**CAR**

## **ACURA**

A new diagnosis of the "PHONE WIRELESS BATTERY CHARGING" system has been developed for the models:

- CDX
- ILX (DE)
- MDX (YD)
- MDX (YE)
- NSX (NC)
- RDX (TB)
- RDX (TC)



# CAR 76.0.0



- RLX (KC)
- TLX (UB)

## **ALFA ROMEO**

New diagnostic systems have been developed for the model TONALE:

- AIRBAG
- BODY COMPUTER
- TYRE PRESSURE
- POWER STEERING

## **BMW**

New diagnostic systems have been developed for the model 2 (U06) Active Tourer:

- BODY COMPUTER
- DISTANCE CONTROL
- MULTIFUNCTION CAMERA

New diagnostic systems have been developed for the model iX (I20):

- BODY COMPUTER
- DISTANCE CONTROL
- DRIVER SIDE AND PASSENGER SIDE REAR DOOR
- MULTIFUNCTION CAMERA

New diagnostic systems have been developed for the model X1 (U11):

- BODY COMPUTER
- DISTANCE CONTROL
- MULTIFUNCTION CAMERA

## **BUICK**

A new diagnostic system has been developed for the model ENVISION:

- SUSPENSIONS

## **CADILLAC**

A new diagnosis of the VEHICLE POSITION RECOGNITION SYSTEM has been developed for the models:

- CT4 [20>]
- CT5 [20>]
- ESCALADE [21>]
- ESCALADE ESV [21>]

A new diagnosis of the SUSPENSIONS system has been developed for the models:

- CT4 [20>]
- CT5 [20>]
- ESCALADE [21>]



# CAR 76.0.0



- ESCALADE ESV [21>]

## **CHERY**

New diagnostic systems have been developed for the models TIGGO 2 PRO:

- RESCUE CALL
- IMMOBILISER
- FRONT RADAR
- DIGITAL VIDEO RECORDER

New diagnostic systems have been developed for the models TIGGO 3x PRO/PLUS:

- RESCUE CALL
- IMMOBILISER
- FRONT RADAR
- DIGITAL VIDEO RECORDER

New diagnostic systems have been developed for the models TIGGO 4:

- RESCUE CALL
- FRONT RADAR

A new diagnostic system has been developed for the model TIGGO 5:

- RESCUE CALL

New diagnostic systems have been developed for the models TIGGO 5X:

- RESCUE CALL
- FRONT RADAR

New diagnostic systems have been developed for the models TIGGO 7:

- RESCUE CALL
- FRONT RADAR

New diagnostic systems have been developed for the models TIGGO 7 PRO/PLUS:

- RESCUE CALL
- IMMOBILISER
- FRONT RADAR
- DIGITAL VIDEO RECORDER

New diagnostic systems have been developed for the models TIGGO 8:

- RESCUE CALL
- FRONT RADAR

New diagnostic systems have been developed for the models TIGGO 8 PRO/PLUS:

- RESCUE CALL





# CAR 76.0.0



- FRONT RADAR

## **CHEVROLET**

A new diagnostic system has been developed for the model BLAZER [19>]:

- PETROL INJECTION for the 2.0i 16v Turbo engine;

New diagnostic systems have been developed for the model SILVERADO 1500 [19>]:

- VEHICLE POSITION RECOGNITION SYSTEM
- SUSPENSIONS

A new diagnosis of the SUSPENSIONS system has been developed for the models:

- C8 Convertible
- C8 Coupé
- SUBURBAN [21>]
- TAHOE [21>]

## **CITROEN**

A new diagnostic system has been developed for the model C 5 X (E43):

- BODY COMPUTER

## **DR**

A new diagnosis of the RESCUE CALL system has been developed for the models:

- DR3
- DR4.0
- DR5
- DR6
- DR6.0
- F35

A new diagnosis of the FRONT RADAR system has been developed for the models:

- DR4.0
- DR5.0
- DR6.0
- F35

## **DS**

New diagnostic systems have been developed for the model DS 4 (D41):

- AIRBAG
- BODY COMPUTER
- BATTERY CONTROL MODULE



# CAR 76.0.0



## **EVO**

A new diagnosis of the RESCUE CALL system has been developed for the models:

- EVO 5
- EVO 6

## **FIAT**

New diagnostic systems have been developed for the model TALENTO COMBI (296):

- AIRBAG
- PARK ASSIST
- AUTOMATIC TRANSMISSION
- MULTI-FUNCTION DISPLAY
- TYRE PRESSURE
- COMFORT SYSTEM
- INSTRUMENTATION

## **FORD**

A new diagnosis of the AUXILIARY HEATING system has been developed for the models:

- ESCAPE IV (CX482)
- FOCUS IV (C519)
- KUGA III (CX482)
- RANGER (P703)

## **GENESIS**

A new diagnostic system has been developed for the model GV70 (JK1):

- SUSPENSIONS

## **GMC**

New diagnostic systems have been developed for the model HUMMER EV:

- VEHICLE POSITION RECOGNITION SYSTEM
- SUSPENSIONS

New diagnostic systems have been developed for the model SIERRA 1500 [19>]:

- VEHICLE POSITION RECOGNITION SYSTEM
- SUSPENSIONS

A new diagnostic system has been developed for the model YUKON [21>]:

- SUSPENSIONS

A new diagnostic system has been developed for the model YUKON XL [21>]:

- SUSPENSIONS



# CAR 76.0.0



## **HONDA**

A new diagnosis of the "PHONE WIRELESS BATTERY CHARGING" system has been developed for the models:

- ACCORD X
- BREEZE (RY)
- CITY VII
- CIVIC X
- CIVIX XI
- CR-V (RM)
- CR-V (RW/RT)
- e (ZC7)
- HR-V (RV)
- JAZZ (GR)
- ODYSSEY (RC1/RC2)
- RIDGELINE (YK)

## **HYUNDAI**

A new diagnostic system has been developed for the model TUCSON (NX):

- SUSPENSIONS

## **INFINITI**

A new diagnosis of the TURBOCHARGER MANAGEMENT system has been developed for the models:

- QX55 (J55) Coupé
- QX60 (L51)

## **KIA**

A new diagnosis of the SUSPENSIONS system has been developed for the models:

- K8 (GL3)
- SPORTAGE (NQ5)

## **LAND ROVER**

A new diagnosis of the TRAILER CONTROL UNIT system has been developed for the models:

- DISCOVERY V (L462)
- RANGE ROVER VELAR (L560)

## **LDV**

New diagnostic systems have been developed for the model D90 (SV9A):

- AUTOMATIC TRANSMISSION
- KEYLESS GO SYSTEM
- FRONT CAMERA
- TELEMATIC CONTROL UNIT

New diagnostic systems have been developed for the model T60 D20:



# CAR 76.0.0



- AUTOMATIC TRANSMISSION
- KEYLESS GO SYSTEM
- FRONT CAMERA
- TELEMATIC CONTROL UNIT

New diagnostic systems have been developed for the model T70:

- AUTOMATIC TRANSMISSION
- KEYLESS GO SYSTEM
- FRONT CAMERA
- TELEMATIC CONTROL UNIT

## **LEXUS**

A new diagnosis of the FRONT ANGLE RADAR 1 / FRONT ANGLE RADAR 2 systems has been developed for the models:

- NX (A2) 200
- NX (A2) 250/260
- NX (A2) 350
- NX (A2) 350h
- NX (A2) 400h+
- NX (A2) 450h+
- RX (LA1) 350

## **LYNK & CO**

New diagnostic systems have been developed for the models 01 / 02 / 03:

- ABS
- ACTIVE SOUND DESIGN
- HYBRID BATTERY
- HIGH VOLTAGE GENERATOR CONTROL UNIT
- LEFT AND RIGHT SIDE OBSTACLE DETECTION CONTROL UNIT
- BATTERY CONTROL MODULE
- RADAR
- BATTERY CHARGING SYSTEM
- FRONT CAMERA
- MULTIFUNCTION CAMERA
- REAR-VIEW CAMERA
- PARKING AID CAMERAS
- TELEMATIC CONTROL UNIT

## **MAXUS**

New diagnostic systems have been developed for the model D60 (SV51-03):

- LANE CHANGE ASSIST
- LANE CHANGE ASSIST 2



# CAR 76.0.0



- ELECTRONIC KEY
- KEYLESS GO SYSTEM
- FRONT CAMERA
- TELEMATIC CONTROL UNIT

New diagnostic systems have been developed for the model D90 (SV9A):

- AUTOMATIC TRANSMISSION
- KEYLESS GO SYSTEM
- FRONT CAMERA
- TELEMATIC CONTROL UNIT

New diagnostic systems have been developed for the model EUNIQ 5:

- LANE CHANGE ASSIST
- LANE CHANGE ASSIST 2
- ELECTRONIC KEY
- KEYLESS GO SYSTEM
- FRONT CAMERA
- TELEMATIC CONTROL UNIT

New diagnostic systems have been developed for the model EUNIQ 6:

- LANE CHANGE ASSIST
- LANE CHANGE ASSIST 2
- ELECTRONIC KEY
- KEYLESS GO SYSTEM
- FRONT CAMERA
- TELEMATIC CONTROL UNIT

New diagnostic systems have been developed for the model G20:

- AUTOMATIC TRANSMISSION
- KEYLESS GO SYSTEM
- FRONT CAMERA
- TELEMATIC CONTROL UNIT

New diagnostic systems have been developed for the model G50 (SV51-04):

- LANE CHANGE ASSIST
- LANE CHANGE ASSIST 2
- ELECTRONIC KEY
- KEYLESS GO SYSTEM
- FRONT CAMERA
- TELEMATIC CONTROL UNIT

New diagnostic systems have been developed for the model T60 D20:



# CAR 76.0.0



- AUTOMATIC TRANSMISSION
- KEYLESS GO SYSTEM
- FRONT CAMERA
- TELEMATIC CONTROL UNIT

New diagnostic systems have been developed for the model T70:

- AUTOMATIC TRANSMISSION
- KEYLESS GO SYSTEM
- FRONT CAMERA
- TELEMATIC CONTROL UNIT

New diagnostic systems have been developed for the model T90:

- KEYLESS GO SYSTEM
- FRONT CAMERA

## **MERCEDES-BENZ**

New diagnostic systems have been developed for the models C (206)/C (206) L/C (206) T:

- UPPER CONTROL PANEL
- OVERHEAD CONTROL PANEL
- FRONT RIGHT AND LEFT DOOR
- REAR RIGHT AND LEFT DOOR
- DRIVER SIDE AND PASSENGER SIDE SEAT ADJUSTMENT
- RIGHT AND LEFT REVERSIBLE BELT PRETENSIONER
- CRUISE SPEED RADAR
- STEERING WHEELS
- SUSPENSIONS

New diagnostic systems have been developed for the model EQE (295):

- INTERIOR FRONT LIGHT CONTROL UNIT
- INTERIOR REAR LIGHT CONTROL UNIT
- INTERIOR LIGHT CONTROL UNIT
- UPPER CONTROL PANEL
- OVERHEAD CONTROL PANEL
- FRONT RIGHT AND LEFT DOOR
- REAR RIGHT AND FRONT LEFT DOOR
- DRIVER SIDE AND PASSENGER SIDE SEAT ADJUSTMENT
- STEERING WHEELS
- SUSPENSIONS

New diagnostic systems have been developed for the model EQE SUV (294):

- INTERIOR FRONT LIGHT CONTROL UNIT
- INTERIOR REAR LIGHT CONTROL UNIT



# CAR 76.0.0



- INTERIOR LIGHT CONTROL UNIT
- UPPER CONTROL PANEL
- OVERHEAD CONTROL PANEL
- FRONT RIGHT AND LEFT DOOR
- REAR RIGHT AND FRONT LEFT DOOR
- DRIVER SIDE AND PASSENGER SIDE SEAT ADJUSTMENT
- STEERING WHEELS

New diagnostic systems have been developed for the model EQS (297):

- INTERIOR FRONT LIGHT CONTROL UNIT
- INTERIOR REAR LIGHT CONTROL UNIT
- INTERIOR LIGHT CONTROL UNIT
- UPPER CONTROL PANEL
- OVERHEAD CONTROL PANEL
- FRONT RIGHT AND LEFT DOOR
- REAR RIGHT AND FRONT LEFT DOOR
- DRIVER SIDE AND PASSENGER SIDE SEAT ADJUSTMENT
- STEERING WHEELS
- SUSPENSIONS

New diagnostic systems have been developed for the model EQS SUV (296):

- INTERIOR FRONT LIGHT CONTROL UNIT
- INTERIOR REAR LIGHT CONTROL UNIT
- INTERIOR LIGHT CONTROL UNIT
- UPPER CONTROL PANEL
- OVERHEAD CONTROL PANEL
- FRONT RIGHT AND LEFT DOOR
- REAR RIGHT AND FRONT LEFT DOOR
- DRIVER SIDE AND PASSENGER SIDE SEAT ADJUSTMENT
- STEERING WHEELS

New diagnostic systems have been developed for the model GLC (254):

- INTERIOR FRONT LIGHT CONTROL UNIT
- INTERIOR REAR LIGHT CONTROL UNIT
- INTERIOR LIGHT CONTROL UNIT
- UPPER CONTROL PANEL
- OVERHEAD CONTROL PANEL
- FRONT RIGHT AND LEFT DOOR
- REAR RIGHT AND FRONT LEFT DOOR
- DRIVER SIDE AND PASSENGER SIDE SEAT ADJUSTMENT
- STEERING WHEELS



# CAR 76.0.0



New diagnostic systems have been developed for the models S (223) / S (223) L / S (223) Maybach:

- INTERIOR FRONT LIGHT CONTROL UNIT
- INTERIOR REAR LIGHT CONTROL UNIT
- INTERIOR LIGHT CONTROL UNIT
- UPPER CONTROL PANEL
- OVERHEAD CONTROL PANEL
- FRONT RIGHT AND LEFT DOOR
- REAR RIGHT AND FRONT LEFT DOOR
- DRIVER SIDE AND PASSENGER SIDE SEAT ADJUSTMENT
- STEERING WHEELS
- REDUCING AGENT METERING SYSTEM

New diagnostic systems have been developed for the model SL (232):

- UPPER CONTROL PANEL
- OVERHEAD CONTROL PANEL
- FRONT RIGHT AND LEFT DOOR
- REAR RIGHT AND FRONT LEFT DOOR
- DRIVER SIDE AND PASSENGER SIDE SEAT ADJUSTMENT
- SUSPENSIONS

## **MG**

New diagnostic systems have been developed for the model EXTENDER [19>]:

- AUTOMATIC TRANSMISSION
- KEYLESS GO SYSTEM
- FRONT CAMERA
- TELEMATIC CONTROL UNIT

New diagnostic systems have been developed for the model EXTENDER [21>] Facelift:

- AUTOMATIC TRANSMISSION
- KEYLESS GO SYSTEM
- FRONT CAMERA
- TELEMATIC CONTROL UNIT

## **MITSUBISHI**

A new diagnostic system has been developed for the model OUTLANDER (GM/GN):

- BRAKING SYSTEM

## **NISSAN**

A new diagnostic system has been developed for the model ALTIMA (L34):

- TURBOCHARGER MANAGEMENT

A new diagnostic system has been developed for the model JUKE (F16):





# CAR 76.0.0



- PARKING BRAKE

A new diagnostic system has been developed for the model NV200 electric:

- HYBRID BATTERY

New diagnostic systems have been developed for the model NV300/Primastar Combi [16>]:

- PARK ASSIST
- BODY COMPUTER
- MULTI-FUNCTION DISPLAY
- POWER STEERING

New diagnostic systems have been developed for the model QASHQAI (J12):

- TURBOCHARGER MANAGEMENT
- BRAKING SYSTEM

New diagnostic systems have been developed for the model ROGUE (T33):

- TURBOCHARGER MANAGEMENT
- BRAKING SYSTEM

A new diagnostic system has been developed for the model SYLPHY (BE0):

- HYBRID BATTERY

New diagnostic systems have been developed for the model X-TRAIL (T33):

- TURBOCHARGER MANAGEMENT
- BRAKING SYSTEM

## **OPEL**

New diagnostic systems have been developed for the model ASTRA-L / ASTRA-L Sports Tourer:

- BODY COMPUTER
- BATTERY CONTROL MODULE

New diagnostic systems have been developed for the model VIVARO-B Combi:

- PARK ASSIST
- BODY COMPUTER
- MULTI-FUNCTION DISPLAY
- NAVIGATOR
- POWER STEERING
- COMFORT SYSTEM
- INSTRUMENTATION

## **PEUGEOT**

New diagnostic systems have been developed for the model 308 (P5) / 308 (P5) Station Wagon:



# CAR 76.0.0



- AIRBAG
- BODY COMPUTER
- BATTERY CONTROL MODULE

## **POLESTAR**

New diagnostic systems have been developed for the model 2 EV:

- ELECTRIC MOTOR CONTROL UNIT
- HIGH VOLTAGE CONVERTER
- GATEWAY
- RADAR
- FRONT CAMERA

## **RENAULT**

A new diagnostic system has been developed for the model ALASKAN (U3):

- NAVIGATOR

New diagnostic systems have been developed for the model TRAFIC III Combi:

- PARK ASSIST
- BODY COMPUTER
- MULTI-FUNCTION DISPLAY
- HANDS FREE SYSTEM
- NAVIGATOR
- POWER STEERING
- COMFORT SYSTEM
- AFTERTREATMENT SYSTEM
- INSTRUMENTATION

## **SUZUKI**

New diagnostic systems have been developed for the model SX4 S-CROSS (AKK):

- TELEMETRIC DIAGNOSIS CONTROL UNIT
- PARKING AID CAMERAS

## **VOLKSWAGEN**

A new diagnostic system has been developed for the model MULTIVAN T6.1 (SHM):

- BODY COMPUTER

## **VOLVO**

New diagnostic systems have been developed for the model C40 EV:

- ELECTRIC MOTOR CONTROL UNIT
- HIGH VOLTAGE CONVERTER
- GATEWAY
- RADAR



# CAR 76.0.0



- BATTERY CHARGING SYSTEM
- FRONT CAMERA
- ELECTRIC DRIVE

New diagnostic systems have been developed for the model XC40:

- ELECTRIC MOTOR CONTROL UNIT
- HIGH VOLTAGE CONVERTER
- GATEWAY
- RADAR
- FRONT CAMERA
- ELECTRIC DRIVE

New diagnostic systems have been developed for the model XC60 II:

- GATEWAY
- RADAR
- FRONT CAMERA

**DIAGNOSIS**

**SUPERCAR**

## **McLAREN**

New diagnostic systems have been developed for the model 540C:

- BODY COMPUTER
- POWERTRAIN SYSTEM
- STEERING ANGLE SENSOR
- POWER STEERING
- INSTRUMENTATION

New diagnostic systems have been developed for the model 570GT:

- BODY COMPUTER
- POWERTRAIN SYSTEM
- STEERING ANGLE SENSOR
- POWER STEERING
- INSTRUMENTATION

New diagnostic systems have been developed for the model 570S:

- BODY COMPUTER
- POWERTRAIN SYSTEM
- STEERING ANGLE SENSOR
- POWER STEERING
- INSTRUMENTATION



# CAR 76.0.0



New diagnostic systems have been developed for the model 600LT:

- ABS
- AIRBAG
- FRONT LEFT AND RIGHT SEAT ADJUSTMENT
- STEERING ANGLE SENSOR
- POWER STEERING

New diagnostic systems have been developed for the model 720S:

- PARK ASSIST
- BODY COMPUTER
- AUTOMATIC TRANSMISSION
- TYRE PRESSURE
- STEERING ANGLE SENSOR
- POWER STEERING
- CHASSIS MANAGEMENT SYSTEM

New diagnostic systems have been developed for the model GT:

- A/C
- FRONT RIGHT AND LEFT DOOR
- STEERING ANGLE SENSOR

New diagnostic systems have been developed for the model P1:

- AIRBAG
- STEERING ANGLE SENSOR

New diagnostic systems have been developed for the model SENNA:

- AIRBAG
- STEERING ANGLE SENSOR
- INSTRUMENTATION

## **PORSCHE**

A new diagnostic system has been developed for the model MACAN:

- PARK ASSIST

### **NOTICE FOR CUSTOMERS WHO OWN A Windows PC**

Dear Customers, Microsoft 7 has become an obsolete operating system and is no longer supported by Microsoft. Starting from January 2023, even Windows 8.1 is no longer a supported operating system.

To make the most of all the functions in the TEXA IDC5 diagnostic software, we recommend updating your Personal Computers to the latest version of the operating system Windows 10 or Windows 11.

### **OTHER NOTICES**

Please note that the software updates are not available for unsupported tools.

**For more information, please contact your trusted TEXA dealer.**